

Crime in Nebraska 2000

UNIFORM CRIME REPORTS



Nebraska Commission on Law Enforcement and Criminal Justice

Mike Johanns, Governor
Allen L. Curtis, Executive Director

Crime in Nebraska - 2000

Issued by:

The Nebraska Commission on Law Enforcement and Criminal Justice
(Nebraska Crime Commission)
301 Centennial Mall South
P.O. Box 94946
Lincoln, Nebraska 68509
(402) 471 - 2194

Mike Johanns, Governor
Allen L. Curtis, Executive Director

www.nol.org/home/crimecom.

Uniform Crime Reporting Section

Marilyn K. Keelan, Statistical Analyst
Cheri L. Walz, Statistical Clerk

Nebraska Publication Clearinghouse Number L2500S001-2000

In accordance with the Americans with Disabilities Act, the Commission would like to provide reasonable accommodations with respect to persons with disabilities. If you need a reasonable accommodation, please contact the Nebraska Crime Commission. Upon request, this publication may be available in alternate formats.

STATEWIDE CRIME SUMMARY 2000

! A total of 69,184 index offenses were reported or known to law enforcement in 2000.

! 5,596 violent crimes were reported in 2000:

Murder, Manslaughter	61
Forcible Rape	433
Robbery	1,141
Aggravated Assault	3,961

! 63,588 property crimes were reported in 2000:

Burglary	9,822
Larceny-Theft	48,122
Motor Vehicle Theft	5,140
Arson	504

! Larceny-Theft accounted for 70 percent of the total index offenses.

! 16,000 index offenses were reported cleared in 2000, a clearance rate of 23.1 percent. This compares to a national clearance rate of 20 percent.

! 3,933 domestic assaults were reported in 2000.

! 98,437 arrests were reported in 2000.

! Persons under the age of 18 accounted for 19.2 percent of the total arrests. Individuals age 12 thru 17 represent ten percent of the state's total population.

! 18 hate crimes were reported in 2000.

CONTENTS

Uniform Crime Reporting Program	1
Crime Index Offenses	7
Murder, Manslaughter	11
Forcible Rape	14
Robbery	16
Aggravated Assault	19
Burglary	21
Larceny - Theft	24
Motor Vehicle Theft	26
Arson	28
Simple Assault	30
Domestic Assault	31
Hate Crimes	40
Nebraska Arrest Data	44
Officers Assaulted	57
Offense Data by County	61
Arrest Data by County	73

LIST OF TABLES

1	Index Offenses, 2000	8
2	Crimes of Violence and Crimes Against Property, 1999 - 2000	9
3	Type and Value of Property Stolen and Recovered	9
4	Murder Victims by Age, Sex, and Race	12
5	Known Murder Offenders by Age, Sex, and Race	12
6	Murder, Manslaughter - Type of Weapon	12
7	Rape - Relationship of Victim to Offender	15
8	Rape - Age Groups of Victims	15
9	Robbery - Place of Occurrence	17
10	Robbery - Type of Property Stolen, Recovered	17
11	Burglary - Place of Occurrence	22
12	Burglary - Type of Property Stolen, Recovered	22
13	Larceny - Theft	25
14	Larceny - Theft - Type of Property Stolen, Recovered	25
15	Motor Vehicle Theft - Type of Property Stolen, Recovered	27
16	Arson - Type of Property and Property Loss	29
17	Number of Domestic Assaults and Arrests - 2000	31
18	Arrests by Age Group - 2000	32
19	Domestic Assaults and Arrests by County - 2000	33
20	Hate Crimes by Type of Crime	40
21	Hate Crimes - 2000	41
22	Hate Crimes by Type of Location	41
23	Hate Crimes by Law Enforcement Agency	42
24	Total Arrests , 2000	46
25	Comparison of Arrests, 1999 - 2000	47
26	Juvenile and Adult Arrests, 1999 - 2000	48
27	Comparison of Adult and Juvenile Arrests	49
28	Total Arrests by Age	50
29	Total Arrests by Sex	52
30	Total Arrests by Race	53
31	Total Arrests by Race, Under Age 18	54
32	Total Arrests by Race, Age 18 and Over	55
33	Drug Abuse Arrests by Sex and Race	56
34	Drug Abuse Arrests, 1999 - 2000	57
35	Officers Assaulted - Type of Activity, 1999 - 2000	58
36	Officers Assaulted - Type of Weapon	58
37	Officers Assaulted - Type of Assignment	59

LIST OF FIGURES

1	Violent Crimes - Ten Year Trend	10
2	Property Crimes - Ten Year Trend	10
3	Murder, Manslaughter, Relationship of Victim to Offender	13
4	Murder, Manslaughter - Ten Year Trend	13
5	Forcible Rape - Ten Year Trend	15
6	Robbery by Type of Weapon	18
7	Robbery - Ten Year Trend	18
8	Aggravated Assault by Type of Weapon	20
9	Aggravated Assault - Ten Year Trend	20
10	Burglary - Ten Year Trend	23
11	Larceny - Theft - Ten Year Trend	24
12	Motor Vehicle Theft - Ten Year Trend	27
13	Arson - Ten Year Trend	28
14	Domestic and Non-Domestic Assaults - 2000	31
15	Domestic Assault Arrests by Age Group	32
16	Officers Assaulted by Time, 2000	57

Nebraska Uniform Crime Reporting Program

INTRODUCTION

This annual report presents data on crime and arrests reported by law enforcement agencies through the Nebraska Uniform Crime Reporting (UCR) Program. During 2000, 160 law enforcement agencies submitted monthly UCR's to the Nebraska Commission on Law Enforcement and Criminal Justice, hereafter referred to as the Commission, which administers the Nebraska UCR Program. The Nebraska UCR Program submits the data to the National UCR Program which is administered by the Federal Bureau of Investigation.

The National UCR Program - Historical Background*

Recognizing a need for national crime statistics, the International Association of Chiefs of Police (IACP) formed the Committee on Uniform Crime Records in the 1920's to develop a system of uniform police statistics. Establishing offenses known to law enforcement as the appropriate measure, the Committee evaluated various crimes on the basis of their seriousness, frequency of occurrence, pervasiveness in all geographic areas of the country, and likelihood of being reported to law enforcement. After studying state criminal codes and making an evaluation of the record keeping practices in use, the Committee in 1929 completed a plan for crime reporting which became the foundation of the UCR Program.

Seven offenses were chosen to serve as an index for gauging fluctuations in the overall volume and rate of crime. Known collectively as the Crime Index, these offenses included the violent crimes of murder and nonnegligent manslaughter, forcible rape, robbery, aggravated assault and the property crimes of burglary, larceny-theft, and motor vehicle theft. By congressional mandate, arson was added as the eighth Index offense in 1979.

During the early planning of the program, it was recognized that the differences among criminal codes precluded a mere aggregation of state statistics to arrive at a national total. Further, because of the variances in punishment for the same offenses in different state codes, no distinction between felony and misdemeanor crimes was possible. To avoid these problems and provide nationwide uniformity in crime reporting, standardized offense definitions by which law enforcement agencies were to submit data, without regard for local statutes, were formulated.

National Incident-Based Reporting System (NIBRS) - Redesigned UCR Program*

Throughout the years, the UCR Program has remained virtually unchanged in terms of data collected and disseminated. Recognizing the need for improved statistics, law enforcement called for a thorough evaluative study that would modernize the UCR Program. The FBI fully concurred with the need for an updated program and lent its complete support, formulating an examination of the historical evolution of the Program (1982). The second phase involved an examination of potential futures for UCR and concluded with a set of recommended changes set forth in the draft "Blueprint

* Crime in the U.S., 1994, FBI, Washington, D.C.

for the Future of the Uniform Crime Reporting Program” (1985). At the eighth National UCR Conference held in 1985, the phase two recommendations were presented and the overall concept for the revised Program was unanimously approved. One of the first steps taken by the FBI to implement the redesigned UCR was the development of new offense definitions and data elements. A pilot project was conducted during 1987 in South Carolina. In 1988, the FBI presented a draft of reporting guidelines to law enforcement executives at a national conference. At the conference, there was an endorsement that a new, incident-based reporting system be established. The National Incident-Based Reporting System (NIBRS) will collect data on each single incident and arrest within 22 crime categories. For each offense known to police within these categories, incident, victim, property, offender, and arrestee information will be gathered when available. The goal of the redesign is to modernize crime information by collecting data presently maintained in law enforcement records; the enhanced UCR Program is, therefore, a byproduct of current records systems. The FBI was able to accept NIBRS data as of January 1989 and twenty-one states, including Nebraska, are now certified for submission of NIBRS data.

The Nebraska UCR Program

During the 1970's, the FBI actively assisted individual states in the development of state UCR Programs which would be compatible with the national program. The Nebraska UCR Program became operational on January 1, 1971. Commencing on that date, law enforcement agencies in Nebraska began submitting UCR's to one central agency in Nebraska, the Commission, and the reports are in turn forwarded to the National Program after review and correction. The State Patrol, all sheriffs' departments, and police departments of municipalities of 1,500 population and over are required to submit UCR's by the seventh day after the end of the month. In 1982, the Nebraska Program became an “incident-based” reporting system. That is, crimes were reported by individual incident. This change in reporting has laid the groundwork for conversion to the new Nebraska Incident-Based Reporting System (NIBRS), which will be compatible with the National Incident-Based Reporting System. Law enforcement agencies may convert to NIBRS as they acquire the computer resources to submit NIBRS data. The following agencies submitted NIBRS data to the Commission during 2000: Buffalo Co. S.O., Gage Co. S.O., Beatrice P.D., Bellevue P.D., Columbus P.D., Gordon P.D., Holdrege P.D., Kearney P.D., Norfolk P.D., and Plattsmouth P.D.

Crime Index

The extent, fluctuation and distribution of crime in the state is measured by the crime index. The crime index is composed of the following offenses: murder, nonnegligent manslaughter, forcible rape, robbery, aggravated assault, burglary, larceny-theft, motor vehicle theft, and arson. Many categories of crime are not of sufficient importance to be included in the index; some serious crimes, such as kidnaping, do not occur with enough regularity to be meaningful in the index. With these considerations in mind, the above offenses were selected as a group to serve as a measure of crime.

Clearances

For UCR purposes, an offense can be cleared by arrest or by exceptional means. An offense can be cleared by arrest when the offender is identified, there is enough evidence to charge him and he is actually taken into custody. The arrest of one person can clear several offenses and several persons may clear one offense. When some element beyond police control precludes formal charges against the offender, such

as the victim's refusal to prosecute or death of the offender, an offense can be cleared by exceptional means.

Crime Rate

Crime rates relate the incidence of crime to population. Estimates of current population are used in computing crime rates. Crime rates are more refined indicators for comparative purposes than are volume figures. To compute a crime rate per 100,000 population, first divide the population of the area by 100,000 and then divide the crime index by the resulting figure. At various times throughout this report a rate per 1,000 population is used to be more meaningful for the state.

Crime Factors

Statistics gathered under the UCR Program are law enforcement statistics. The agencies report the offense and arrest data according to the standard offense classifications and not according to state statutes or local ordinances. Offenses are related to municipality and county in which they occur, rather than to the agency which may investigate, arrest or otherwise dispose of the case. The clearance is attributed to the municipality or county in which the offense occurred, even though the arresting agency may not be the department originally reporting the offense.

The factors which influence crime rates are dependent upon many characteristics of the community, and, therefore, when attempting to interpret the crime statistics presented herein, one should be aware of the social structure and the factors that lead to or cause criminal behavior.

Awareness of the presence of certain crime factors, which may influence the resulting volume and type of statistics presented, is necessary if fair and equitable conclusions are to be drawn. These crime influencing factors are present, to some degree, in every community and their presence affects, in varying degrees, the crime experience of that community. Attempts at comparison of crime figures between communities should not be made without first considering the individual factors present in each community. Below are some of the conditions which will by type and volume affect the crime that occurs from place to place:

- Population density and degree of urbanization.

- Variations in composition of the population, particularly youth concentration.

- Stability of population with respect to residents' mobility, commuting patterns, and transient factors.

- Modes of transportation and highway system.

- Economic conditions, including median income, poverty level, and job availability.

- Cultural factors and educational, recreational, and religious characteristics.

- Family conditions with respect to divorce and family cohesiveness.

- Climate.

- Effective strength of law enforcement agencies.

- Administrative and investigative emphases of law enforcement.

- Policies of other components of the criminal justice system (i.e., prosecutorial, judicial, correctional, and probational).

- Citizens' attitudes towards crime.

Crime reporting practices of the citizenry.

Caution should always be used when using the crime statistics presented herein, however, it should also be kept in mind that the data presented is the most accurate currently available. The law enforcement personnel who provide the data are to be commended for their efforts to provide accurate data. Without their sincere cooperation, this publication would not be possible. Crime is a social problem and therefore, should be a concern of the entire community.

DEFINITIONS OF OFFENSES

Uniformity of reporting depends upon the proper classification of offenses by the law enforcement agencies. It must be emphasized that the following definitions are not meant to be legal definitions as they are written in the Nebraska Penal Code. The purpose of these classifications is to establish a uniform national system for classifying similar offenses even though their legal definitions may vary considerably from state to state.

Part I Offenses (Offense and arrest data are collected for Part I Offenses)

Criminal Homicide - Murder and Nonnegligent Manslaughter - the willful (nonnegligent) killing of one human being by another. Death by Negligence - the killing of another person through gross negligence.

Forcible Rape - the carnal knowledge of a female forcibly and against her will. Assaults or attempts to commit rape by force or threat of force are also included; however, statutory rape (without force) and other sex offenses are excluded.

Robbery - the taking or attempting to take anything of value from the care, custody, or control of a person or persons by force or threat of force or violence and/or by putting the victim in fear.

Aggravated Assault - an unlawful attack by one person upon another for the purpose of inflicting severe or aggravated bodily injury. This type of assault usually is accompanied by the use of a weapon or by means likely to produce death or great bodily harm. Attempts are included since it is not necessary that an injury result when a gun, knife, or other weapon is used which could and probably would result in serious personal injury if the crime were successfully completed.

Burglary - the unlawful entry of a structure to commit a felony or a theft. The use of force to gain entry is not required to classify an offense as burglary.

Larceny-Theft - the unlawful taking, carrying, leading, or riding away of property from the possession or constructive possession of another. This category does not include embezzlement, confidence games, forgery, and worthless checks.

Motor Vehicle Theft - the theft or attempted theft of a motor vehicle.

Arson - any willful or malicious burning or attempt to burn, with or without intent to

defraud, a dwelling house, public building, motor vehicle or aircraft, personal property of another, etc.

Part II Offenses (Offense and arrest data are collected for Simple Assault while only arrest data are collected for the remaining Part II Offenses)

Simple Assault - any assault which does not involve the use of a firearm, knife, cutting instrument, or other dangerous weapon and in which there was no serious or aggravated injury to the victim.

Forgery and Counterfeiting - all offenses dealing with the making, altering, uttering, or possessing with intent to defraud anything false in the semblance of that which is true.

Fraud - fraudulent conversion and obtaining money or property by false pretense. Includes bad checks, confidence games, etc.

Embezzlement - the misappropriation or misapplication of money or property entrusted to one's care, custody or control.

Stolen Property - all offenses of buying, receiving, possessing, or concealing stolen property as well as all attempts to commit any of these offenses.

Vandalism / Destruction of Property - all willful or malicious destruction, injury, disfigurement or defacement of any public or private property, real or personal, without the consent of the owner or person having custody or control by cutting, tearing, breaking, marking, painting, drawing, covering with filth or any other such means as may be specified by law or ordinance.

Weapons - includes violations of weapons laws such as manufacture, sale or possession of deadly weapons; carrying deadly weapons; furnishing deadly weapons to minors; aliens possessing deadly weapons; using or manufacturing silencers; and all attempts to commit any of the above offenses.

Prostitution and Commercialized Vice - includes the sex offenses of a commercialized nature such as prostitution; keeping a bawdy house, disorderly house or house of ill repute; pandering, procuring, transporting or detaining women for immoral purposes, etc., and all attempts to commit any of the above.

Sex Offenses - includes all sex offenses other than forcible rape, prostitution and commercialized vice. This encompasses offenses against chastity, common decency, morals and the like such as adultery and fornication, buggery, incest, indecent exposure, sodomy, statutory rape (no force) and all attempts to commit any of the above.

Drug Abuse Violations - statistics for these arrests are requested on the basis of the narcotics used. This includes all arrests for the violation of state and local laws, specifically those relating to the unlawful possession, sale, use, growing, manufacturing and making of narcotic drugs. Four divisions of narcotic drugs are recognized. These are:

- (a) Opium and cocaine and their derivatives (morphine, heroin, codeine),
- (b) Marijuana,
- (c) Synthetic narcotics which can cause true addiction (demerol, methadones) and
- (d) Other dangerous non-narcotic drugs (barbiturates, benzedrine).

Gambling - includes all charges relating to promoting, permitting or engaging in illegal gambling. This classification is broken into three divisions:

- (a) bookmaking (horse and sport book)
- (b) numbers and lottery and
- (c) all other gambling.

Offenses Against Family and Children - includes all charges of nonsupport, neglect or abuse of family and children such as desertion, abandonment or nonsupport, neglect or abuse of child, or nonpayment of alimony.

Driving Under the Influence - limited to driving or operating any vehicle while drunk or under the influence of liquor or narcotic drugs.

Liquor Laws - with the exception of drunkenness and driving under the influence, all state or local liquor law violations are placed in this class. Federal violations are not included. Include manufacturing, selling, transporting, furnishing or possessing intoxicating liquor, including minors in possession, maintaining unlawful drinking places, bootlegging, operating a still, furnishing liquor to a minor, using a vehicle for illegal transportation of liquor, and drinking on a train or public conveyance.

Disorderly Conduct - Disturbing the Peace - a breach of the peace (unlawful assembly, disturbing the peace, disturbing meetings, blasphemy, profanity, obscene language, refusing to assist an officer, etc.)

All Other Offenses - includes all violations of state and local laws not otherwise classified.

Curfew and Loitering Law Violations - (Juveniles) all arrests made for violations of local curfew or loitering ordinances.

Runaways - (Juveniles) limited to juveniles taken into custody who have run away from the reporting jurisdiction.

CRIME INDEX OFFENSES

The index offenses include the violent crimes of murder and nonnegligent manslaughter, forcible rape, robbery, aggravated assault, and the property crimes of burglary, larceny-theft, motor vehicle theft, and arson. During 2000, 155 law enforcement agencies submitted Uniform Crime Reports on a monthly basis. These reports provided information on offenses that were reported or known to law enforcement, as well as information on persons arrested or cited for criminal violations and offenses cleared by arrest or by exceptional means.

Volume

A total of 69,184 index offenses were reported or known to law enforcement agencies in 2000. The violent crimes of murder, manslaughter, forcible rape, robbery, and felony assault accounted for 8.1 percent of the total index offenses. The property crimes of burglary, larceny-theft, motor vehicle theft, and arson accounted for 91.9 percent of the total offenses.

Larceny-theft was the most frequently reported crime, accounting for 69.6 percent of the total crimes reported.

Crime Rates

In 2000, the rate of crimes per 1,000 population was 40.4, based upon an estimated population of 1,711,263. The crime rate for violent crimes was 3.3 crimes per 1,000 population. There were 37.2 property crimes per 1,000 population.

Clearances and Arrests

A total of 16,001 index offenses were reported cleared during 2000, a clearance rate of 23.1 percent. Murder, manslaughter had the highest clearance rate, 78.7 percent. Violent crimes had a clearance rate of 59.8 percent and crimes against property had a clearance rate of 19.9 percent.

During 2000, a total of 13,200 persons were arrested for index offenses. Juvenile arrests accounted for 39 percent of the arrests for index offenses. The age group of 13-14 accounted for the largest percentage of persons arrested for index offenses, eleven percent.

**Table 1
Index Offenses, 2000**

Index Offenses	Number of Index Offenses	Rate Per 1,000 Population¹	Percent Distribution	Percent Cleared
Crimes of Violence	5,596	3.3	8.1	59.8
Murder, Manslaughter	61	0.04	0.1	78.7
Forcible Rape	433	0.3	0.6	56.4
Rape by Force	385			
Attempt to Rape	48			
Robbery	1,141	0.7	1.6	33.6
Firearm	489			
Knife or Cutting Instrument	94			
Other Dangerous Weapon	89			
Strong Arm - No Weapon	469			
Aggravated Assault	3,961	2.3	5.7	67.4
Firearm	740			
Knife or Cutting Instrument	681			
Other Dangerous Weapon	1,798			
Hands, Fists, Feet, Etc.	742			
Crimes Against Property	63,588	37.2	91.9	19.9
Burglary	9,822	5.7	14.1	13.1
Forcible Entry	6,474			
Unlawful Entry - No Force	2,535			
Attempted Forcible Entry	813			
Larceny - Theft	48,122	28.1	69.6	21.3
Motor Vehicle Theft	5,140	3.0	7.4	20.7
Autos	3,779			
Trucks and Buses	1,057			
Other Vehicles	304			
Arson	504	0.3	0.7	14.3
Structural	227			
Mobile	167			
Other	110			
Total	69,184	40.4	100.0	23.1

¹ 2000 Estimate of Population - 1,711,263

Table 2
Crimes of Violence and Crimes Against Property, 1999 - 2000

Index Offense	Number of Offenses 1999	Number of Offenses 2000	Percent Change
Crimes of Violence	7,172	5,596	-22.0
Murder, Manslaughter	60	61	+1.0
Forcible Rape	413	433	+4.8
Robbery	1,263	1,141	-9.7
Aggravated Assault	* 5,436	* 3,961	-27.1
Crimes Against Property	61,713	63,588	+3.0
Burglary	10,149	9,822	-3.2
Larceny-Theft	45,662	48,122	+5.4
Motor Vehicle Theft	5,417	5,140	-5.1
Arson	485	504	+3.9
Total	68,885	69,184	+0.4

* During 2000, the Omaha P.D. discovered an error in the classification of assaults. Prior to 2000, some simple assaults were being incorrectly classified as aggravated assault.

Table 3
Type and Value of Property Stolen, Recovered *

Type of Property	Value Stolen	Value Recovered	Percent Recovered
Currency, Notes, Etc.	\$ 2,515,494	\$ 190,234	7.6
Jewelry and Precious Metals	1,362,089	195,156	14.3
Clothing and Furs	428,217	85,224	19.9
Motor Vehicles	10,630,224	7,664,369	72.1
Office Equipment	582,696	83,453	14.2
Televisions, Radios, Cameras, Etc.	3,726,017	294,070	7.9
Firearms	435,002	103,990	23.9
Household Goods	619,996	57,153	9.2
Consumable Goods	658,874	36,618	5.6
Livestock	229,600	9,620	4.2
Miscellaneous	16,081,550	924,859	5.8
Total	\$ 37,269,759	\$ 9,644,746	25.9

* Does not include Douglas Co. S.O. and Omaha P.D.

Figure 1
Violent Crimes - Ten Year Trend

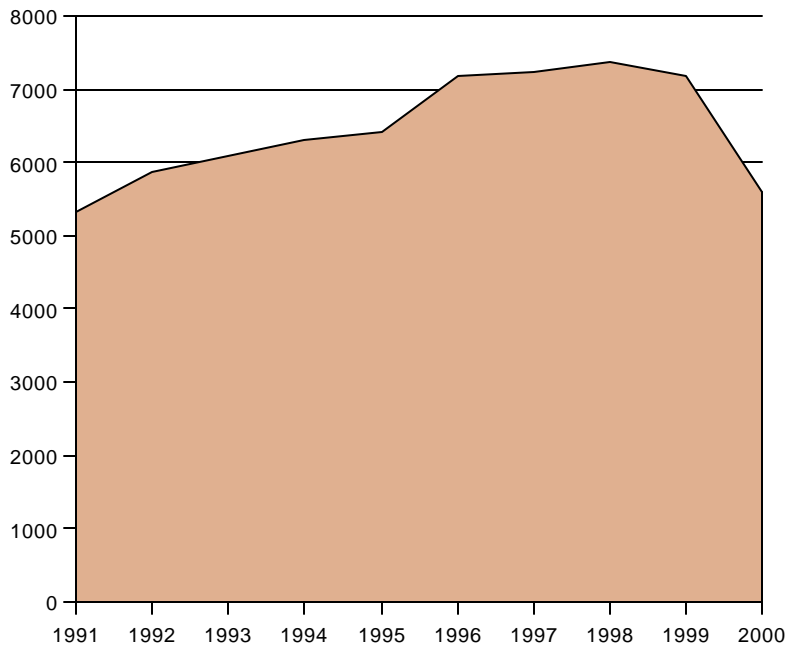
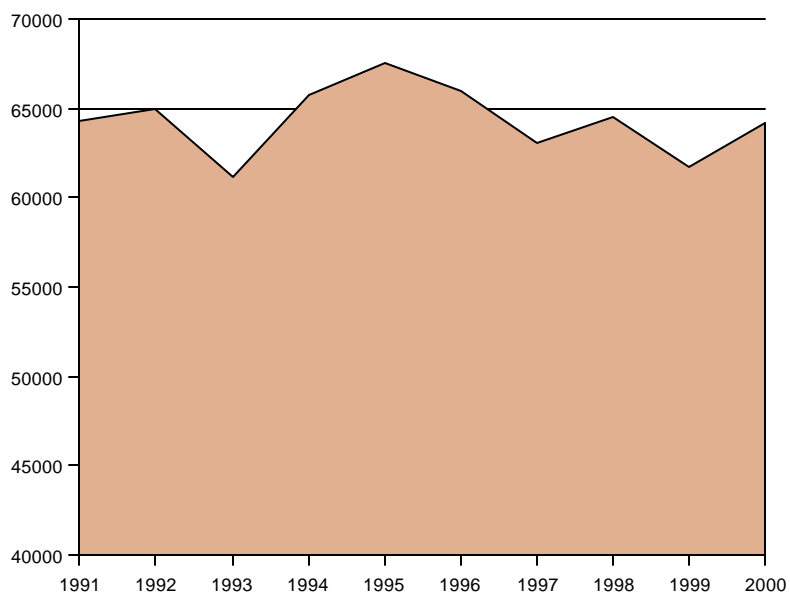


Figure 2
Property Crimes - Ten Year Trend



MURDER, MANSLAUGHTER

Murder and nonnegligent manslaughter are defined as the willful (nonnegligent) killing of one human being by another. Not included in this definition are deaths caused by negligence, suicide, or accidental deaths. Attempts to commit murder are classified as aggravated assault.

Volume and Rate

During 2000, a total of 61 murder, manslaughters were reported by law enforcement agencies in Nebraska. Murder, manslaughter accounted for 1.1 percent of all violent crimes and one-tenth of one percent of all index offenses. In 2000, there were .04 murders per 1,000 population. Forty-eight murder, manslaughters were cleared in 2000, a clearance rate of 78.7 percent.

Murder, Manslaughter Analysis

Law enforcement agencies are requested to provide additional information regarding the victim, the offender, the type of weapon used, and the relationship of the victim to the offender(s). The Omaha Police Department did not provide supplementary reports.

The victim data revealed that 58 percent of the victims were male while 42 percent were female. Victims in the age group of 40-49 accounted for 25 percent of the total victims. Victims age 17 and under accounted for 4 percent as did victims age 60 and above. An analysis by race revealed that 83 percent were White, 4 percent were Black, and 13 percent were of other races.

Of the twenty known offenders, males accounted for 75 percent of the total and females accounted for 25 percent. 85 percent of the offenders were White.

Outside of the City of Omaha, most murders, 58 percent, were committed either by a relative or an acquaintance of the victim. A further breakdown indicated that 17% were committed by a relative; 42% were committed by an acquaintance; and in 42% of the incidents the offender could not be determined and, therefore, the relationship could not be determined.

Table 4
Murder Victims by Age, Sex, and Race

Age Group	Number	Percent Distribution	Sex		Race			
			Male	Female	White	Black	Indian	Other
6-17	1	4.2	1	0	1	0	0	0
18-24	4	16.7	3	1	4	0	0	0
25-29	4	16.7	2	2	2	1	0	1
30-39	4	16.7	1	3	3	0	0	1
40-49	6	25.0	4	2	5	0	1	0
50-59	4	16.7	3	1	4	0	0	0
60-Above	1	4.2	0	1	1	0	0	0
	24	100.0	14	10	20	1	1	2

Table 5
Known Murder Offenders by Age, Sex, and Race

Age Group	Number	Percent Distribution	Sex		Race			
			Male	Female	White	Black	Indian	Asian
6-17	1	5.0	1	0	1	0	0	0
18-24	5	25.0	5	0	4	0	1	0
25-29	1	20.0	3	1	3	0	0	1
30-39	5	25.0	4	1	4	0	1	0
40-49	4	20.0	2	2	4	0	0	0
50-Above	1	5.0	0	1	1	0	0	0
Total	20	100.0	15	5	17	0	2	1

Table 6
Murder, Manslaughter - Type of Weapon

Type of Weapon	Number	Percent Distribution
Handgun	11	45.8
Shotgun	1	4.2
Rifle	4	16.7
Knife or Cutting Instrument	4	16.7
Other Firearm	1	4.2
Other / Unknown	3	12.5
Total	24	100.0

Figure 3
Murder, Manslaughter
Relationship of Victim to Offender

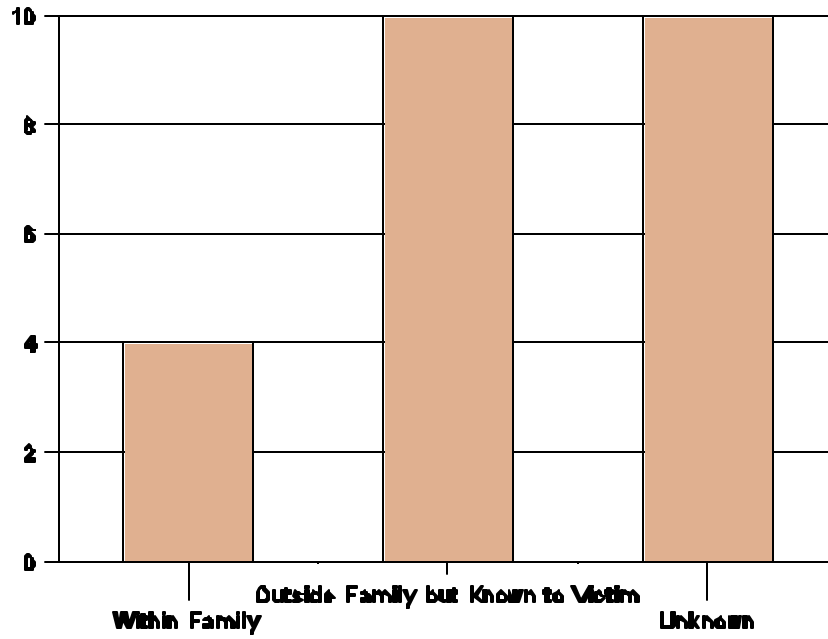
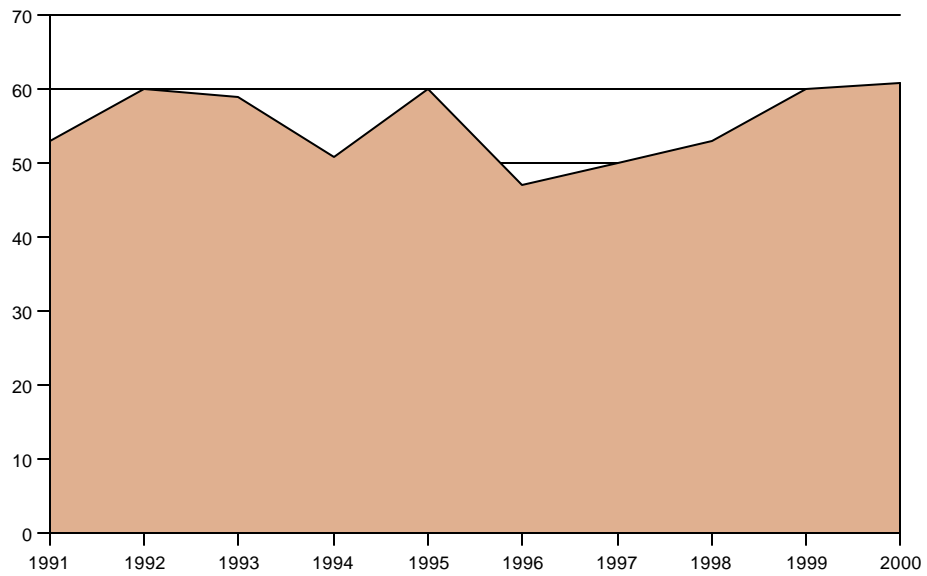


Figure 4
Murder, Manslaughter - Ten Year Trend



FORCIBLE RAPE

Forcible rape is defined as the carnal knowledge of a female forcibly and against her will. All rapes and attempts to rape are counted. Carnal abuse, without force (statutory rape) and other sex offenses are not included.

Volume and Rate

During 2000, law enforcement agencies in Nebraska reported a total of 433 forcible rapes. Forcible rape accounted for 7.7 percent of all violent crimes and 0.6 percent of all index crimes. In 2000, there were 0.3 rapes per 1,000 population. A total of 244 forcible rapes, 56.4 percent, were cleared during 2000.

Analysis of Rape

Rape by force accounted for 88.9 percent of all forcible rapes and 11.1 percent were attempts to rape.

The age group of 25-29 accounted for the highest percentage of persons arrested for forcible rape, 14 percent. Juvenile arrests accounted for 14 percent of all persons arrested for forcible rape.

Rape Circumstances

Law enforcement agencies are asked to submit a supplementary report on the circumstances surrounding any rape by force and attempt to rape. Supplementary reports were received on 199 cases. The Omaha Police Department did not provide supplementary reports in 2000. Victims under the age of 25 accounted for 74 percent of the total victims. Of those victims under age 25, 44 percent were in the age group of 18 thru 24 and 34 percent were in the age group of 11 thru 15.

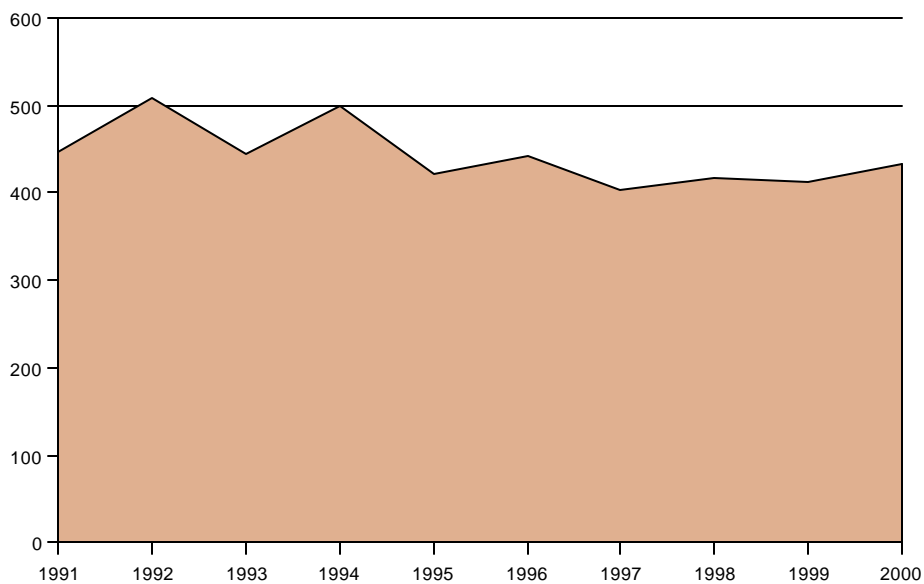
Table 7
Rape - Relationship of Victim to Offender

Relationship	Number	Percent Distribution
Relative	20	10.1
Acquaintance/Known to Victim	124	62.3
Stranger	30	15.1
Not Stated	25	12.6
Total	199	100.0

Table 8
Rape - Age Groups of Victims

Age Group	Number	Percent Distribution
10 and Under	9	4.5
11-15	50	25.1
16-17	24	12.1
18-24	65	32.7
25-29	18	9.0
30-39	23	11.6
40-49	8	4.0
50-Above	2	1.0
Total	199	100.0

Figure 5
Forcible Rape - Ten Year Trend



ROBBERY

Robbery is the taking or attempting to take anything of value from the care, custody, or control of a person or persons by force or threat of force or violence and/or by putting the victim in fear. Robbery takes place in the presence of the victim. The victim, who usually is the owner or person having custody of the property is directly confronted by the perpetrator and is threatened with force or fear that force will be used.

Volume and Rate

During 2000, a total of 1,141 robberies were reported by law enforcement agencies in Nebraska. Robbery accounted for 20.3 percent of all violent crimes and 1.6 percent of all index crimes. In 2000, there were 0.7 robberies per 1,000 population. A total of 383 robberies, 33.6 percent, were cleared in 2000.

Analysis of Robbery

A firearm was used in 43 percent of all robberies, a knife or cutting instrument was used in 8 percent, other dangerous weapons were used in 8 percent and strong-arm tactics were used in 41 percent of all robberies.

Robberies occurring on highways, streets, alleys, etc., accounted for 39.3 percent of all robberies. Robberies of commercial establishments accounted for 19.2 percent. Robberies of banks increased 42%, from 33 in 1999 to 47 in 2000.

Juveniles age 17, accounted for the greatest percentage of persons arrested for robbery, 10 percent. Juveniles accounted for 26 percent of all arrests for robbery.

Of persons arrested for robbery, 48 percent were White, 48 percent were Black, and 3 percent were American Indian/Alaskan Native.

Law enforcement agencies reported a total value of \$306,194 stolen in robbery offenses.

Table 9
Robbery - Place of Occurrence

Classification	Number of Offenses *	Percent Distribution	Total Value	Average Value
Highway (Streets/Alleys)	448 (95)	39.3	\$ 37,427	\$ 393.97
Commercial House	219 (33)	19.2	38,538	1,167.82
Gas or Service Station	37 (8)	3.2	2,111	263.88
Convenience Store	91 (16)	8.0	3,155	197.19
Residence	213 (61)	18.7	73,440	1,203.93
Bank	47 (13)	4.1	136,204	10,477.23
Miscellaneous	86 (42)	7.5	15,319	364.74
Total	1,141 (268)	100.0	\$ 306,194	\$ 1,142.51

* The numbers in parentheses were used to compute the average values as the Omaha P.D. does not provide values of property stolen.

Table 10
Robbery
Type of Property Stolen, Recovered *

Type of Property	Value Stolen	Value Recovered
Currency, Notes, Etc.	\$ 206,803	\$ 6,209
Jewelry and Precious Metals	9,593	30
Clothing and Furs	2,174	764
Motor Vehicles	42,500	39,000
Office Equipment	100	0
Televisions/Radios/Cameras	28,370	150
Firearms	3,135	510
Household Goods	500	0
Consumable Goods	1,150	24
Livestock	0	0
Miscellaneous	5,406	2,849
Total	\$ 299,731	\$ 49,536

*Property descriptions and values are not provided by Douglas Co. S.O., Omaha P.D., and North Platte P.D.

Figure 6
Robbery by Type of Weapon

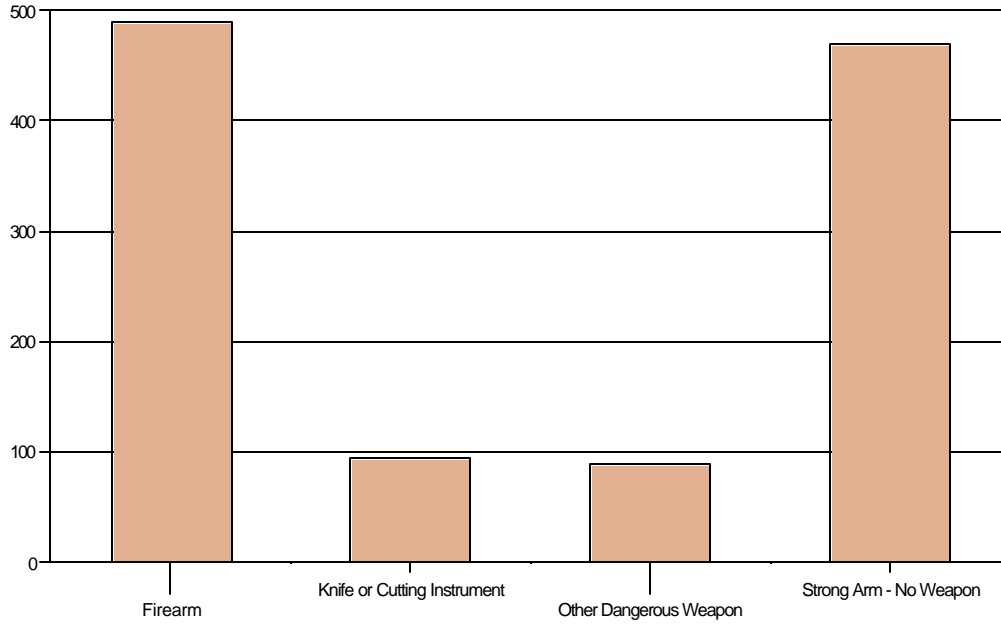
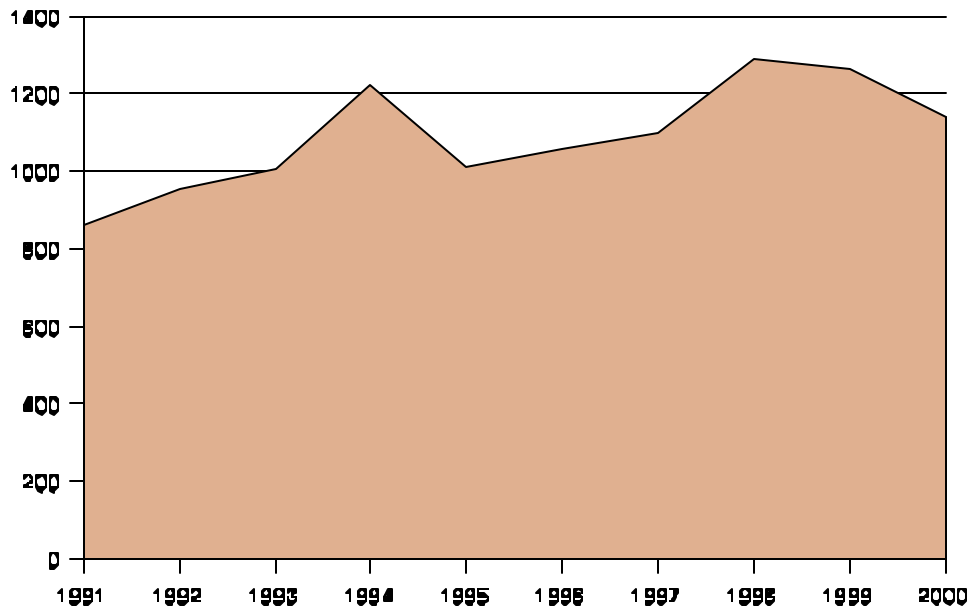


Figure 7
Robbery - Ten Year Trend



AGGRAVATED ASSAULT

Aggravated assault is an unlawful attack by one person upon another for the purpose of inflicting severe or aggravated bodily injury. Aggravated assault usually involves the use of a weapon or other means likely to produce death or great bodily injury. Attempts are included since it is not necessary that an injury result when a firearm, knife, or other weapon is used which could and probably would result in serious injury if the crime were successfully completed.

In September of 2000, the Omaha Police Department conducted an audit of their aggravated assaults and determined that an error was occurring in the classification of assaults. Some simple assaults were being incorrectly classified as Aggravated Assault. Corrections were made to 2000 numbers but not to previous years, therefore, any comparisons to prior years will not be accurate.

Volume and Rate

During 2000, there were 3,961 aggravated assaults reported by law enforcement agencies in Nebraska. Aggravated assaults accounted for 70.8 percent of all violent crimes and 5.7 percent of all index crimes. In 2000, there were 2.3 aggravated assaults per 1,000 population. A total of 2,670 aggravated assaults, 67.4 percent, were cleared in 2000.

Analysis of Aggravated Assault

The use of other dangerous weapon was involved in 45 percent of all aggravated assaults. A firearm was used in 19 percent, a knife was used in 17 percent, and hands/fists/feet were used in 19 percent.

The age group of 25-29 accounted for the highest percentage of persons arrested for aggravated assault, 14 percent. Juveniles accounted for 13 percent of all arrests for aggravated assault.

An analysis of aggravated assault arrests revealed that 67 percent were White, 26 percent were Black, 6 percent were American Indian/Alaskan Native, and one percent were Asian/Pacific Islander.

Figure 8
Aggravated Assault by Type of Weapon

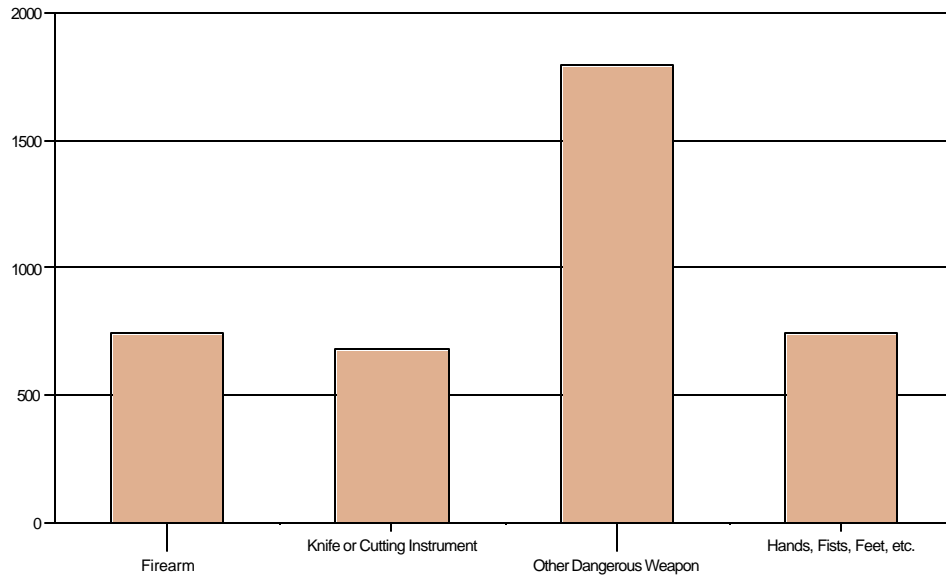
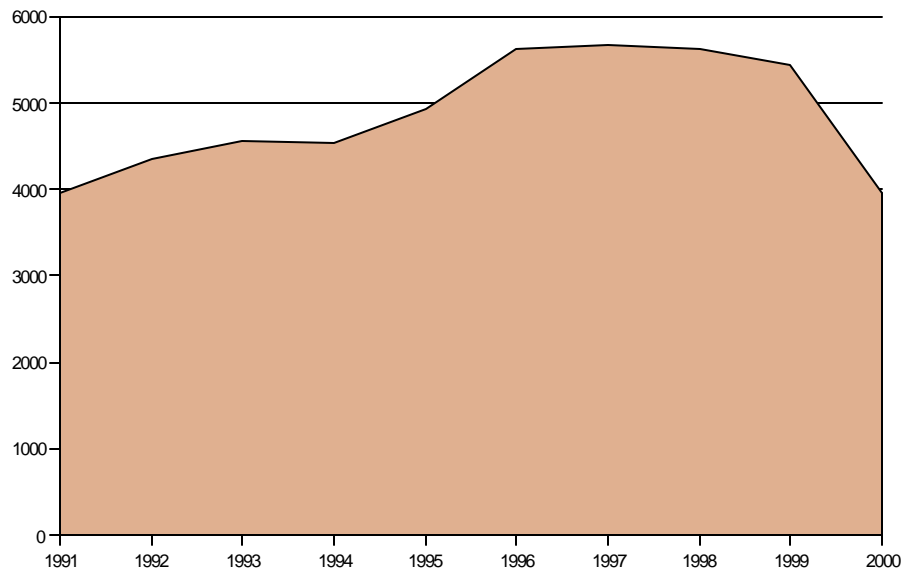


Figure 9
Aggravated Assault - Ten Year Trend



BURGLARY

Burglary is defined as any unlawful entry or attempted forcible entry of any structure to commit a felony or theft. The use of force to gain entry is not required to classify an offense as burglary. Burglary is divided into three categories: forcible entry, unlawful entry - no force, and attempted forcible entry.

Volume and Rate

During 2000, a total of 9,822 burglaries were reported by law enforcement agencies in Nebraska. Burglary accounted for 15.3 percent of all property crimes and 14.1 percent of all index crimes. In 2000, there were 5.7 burglaries per 1,000 population. A total of 1,283 burglaries, 13.1 percent, were cleared in 2000.

Analysis of Burglary

Of all burglaries reported, 61.2 percent involved residences and 38.8 percent involved non-residences. Forced entries accounted for 65.9 percent of the total burglaries, no force entries accounted for 25.8 percent, and attempted forced entries accounted for 8.3

The age group of 13-14 accounted for the highest percentage of persons arrested for burglary, 11 percent. Juveniles accounted for 38 percent of all persons arrested for burglary.

Of persons arrested for burglary, 82 percent were White, 14 percent were Black, 4 percent were American Indian/Alaskan Native and less than one percent were Asian/Pacific Islander.

Law enforcement agencies reported property worth \$6,637,960 stolen in burglary offenses.

Table 11
Burglary - Place of Occurrence

Classification	Number of Offenses *	Percent Distribution	Total Value	Average Value
Residence	6,009 (3,700)	61.2	\$ 3,667,453	\$ 991.20
Non-Residence	3,813 (2,742)	38.8	2,970,507	1,083.34
Total	9,822 (6,442)	100.0	\$ 6,637,960	\$1,030.42

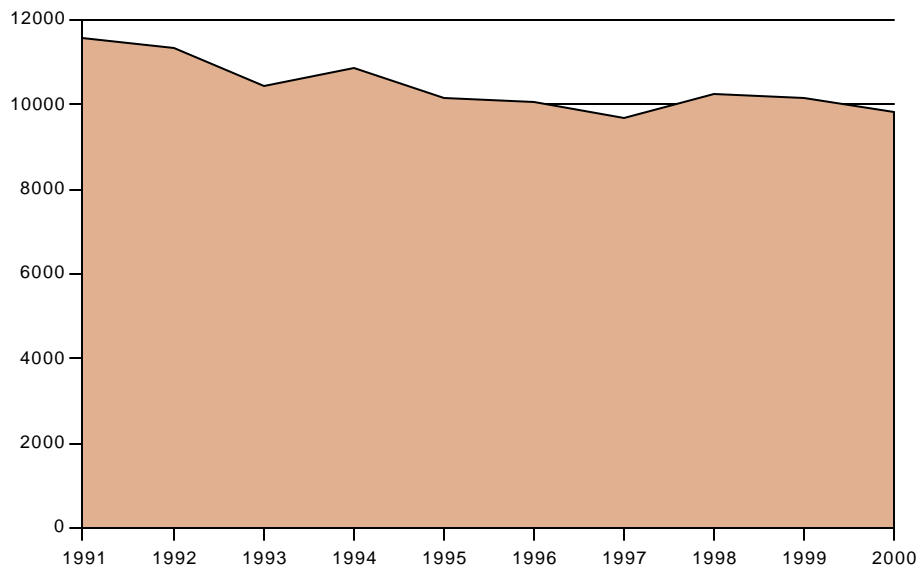
* The numbers in parentheses were used to compute the average values as the Omaha P.D. does not provide values of property stolen.

Table 12
Burglary
Type of Property Stolen, Recovered *

Type of Property	Value Stolen	Value Recovered
Currency, Notes, Etc.	\$ 1,088,014	\$ 107,259
Jewelry and Precious Metals	655,555	82,139
Clothing and Furs	97,499	16,293
Motor Vehicles	658,858	429,885
Office Equipment	302,401	55,089
Televisions/Radios/Cameras	893,133	62,683
Firearms	238,169	43,641
Household Goods	354,268	28,092
Consumable Goods	98,635	4,061
Livestock	300	50
Miscellaneous	2,081,181	214,754
Total	\$ 6,468,013	\$ 1,043,946

* Property descriptions and values are not provided by Douglas Co. S.O., Omaha P.D., and North Platte P.D.

Figure 10
Burglary - Ten Year Trend



LARCENY - THEFT

Larceny-theft is the unlawful taking of the property of another with the intent of depriving that person of ownership. This category does not include embezzlement, confidence games, forgery, or worthless checks.

Volume and Rate

During 2000, a total of 48,122 larceny-thefts were reported by law enforcement agencies in Nebraska. Larceny-theft accounted for 75.7 percent of the crimes against property and 69.6 percent of all index crimes. In 2000, there were 28.1 larceny-thefts per 1,000 population. A total of 10,235 larceny-thefts, 21.3 percent, were cleared.

Analysis of Larceny-Theft

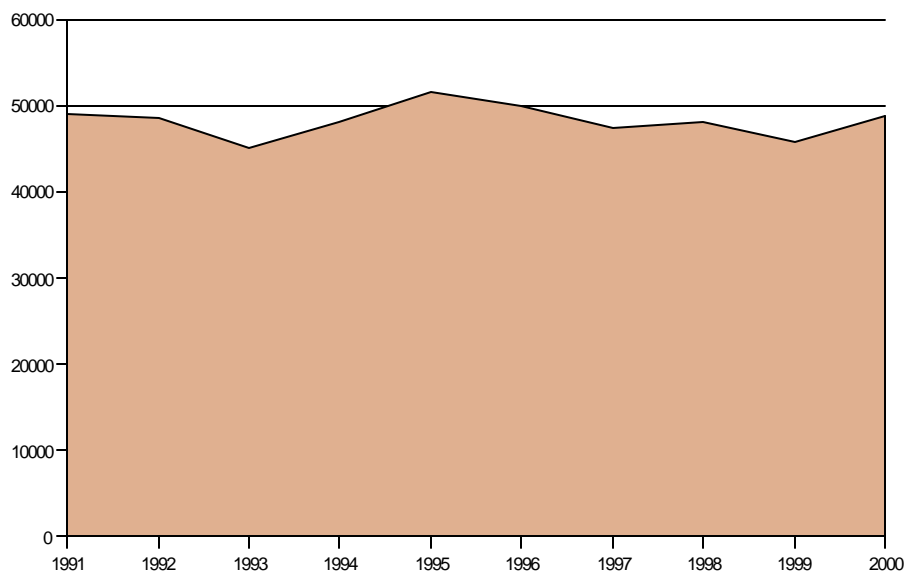
Of the total larceny-thefts reported, thefts from motor vehicles accounted for 25.4 percent, shoplifting accounted for 17.9 percent, and thefts from buildings accounted for 15.7 percent.

The age group of 13-14 accounted for 12 percent of the total number of persons arrested for larceny-theft. Juveniles accounted for 41 percent of the total number arrested.

Of the persons arrested for larceny-theft, 72 percent were White, 24 percent were Black, 3 percent were American Indian/Alaskan Native, and one percent were Asian/Pacific Islander.

Law enforcement agencies reported a total value of \$21,823,246 stolen in larceny-theft offenses.

Figure 11
Larceny-Theft - Ten Year Trend



**Table 13
Larceny-Theft**

Classification	Number of Offenses *	Percent Distribution	Total Value	Average Value
Pocket-Picking	75 (21)	0.2	\$ 4,680	\$ 222.86
Purse-Snatching	144 (59)	0.3	7,946	134.68
Shoplifting	8,605 (4,146)	17.9	316,373	76.31
From Motor Vehicles	12,217 (6,533)	25.4	9,393,202	1,437.81
Motor Vehicle Parts/Access.	4,975 (3,962)	10.3	1,650,526	416.59
Bicycles	2,545 (2,202)	5.3	1,897,923	861.91
From Buildings	7,576 (5,260)	15.7	2,899,241	551.19
From Coin-Operated Machines	422 (326)	0.9	55,462	170.13
From Farmyard or Open Field	981 (981)	2.0	1,049,601	1,069.93
Other	10,582 (7,686)	22.0	4,548,292	591.76
Total	48,122 (31,176)	100.0	\$ 21,823,246	\$ 700.00

* Numbers in parentheses were used to compute the average values as the Omaha P.D. does not provide values of property stolen.

**Table 14
Larceny - Theft
Type of Property Stolen, Recovered ***

Type of Property	Value Stolen	Value Recovered
Currency, Notes, Etc.	\$ 1,194,609	\$ 74,176
Jewelry and Precious Metals	687,040	112,087
Clothing and Furs	309,048	66,992
Office Equipment	272,402	25,224
Televisions/Radios/Cameras	2,754,198	228,695
Firearms	161,187	36,389
Household Goods	247,159	29,061
Consumable Goods	327,014	32,113
Livestock	229,300	9,570
Miscellaneous	13,875,791	663,557
Total	\$ 20,057,748	\$ 1,277,864

* Property descriptions and values are not provided by Douglas Co. S.O., Omaha P.D., and North Platte P.D.

MOTOR VEHICLE THEFT

Motor vehicle theft is defined as the theft or attempted theft of a motor vehicle, including joyriding. A motor vehicle is defined as a self-propelled vehicle that runs on land surface and not on rails. Examples of motor vehicles are automobiles, trucks, buses, motorcycles, motor scooters, snowmobiles, etc. Thefts of farm equipment, bulldozers, airplanes, and construction equipment are not included in the definition of a motor vehicle.

Volume and Rate

During 2000, there were 5,140 motor vehicle thefts reported by law enforcement agencies in Nebraska. Motor vehicle thefts accounted for 8.0 percent of all property crimes and 7.4 percent of all index offenses. In 2000, there were 3.0 motor vehicle thefts per 1,000 population. There were 1,066 motor vehicle thefts cleared in 2000, a clearance rate of 20.7 percent.

Analysis of Motor Vehicle Theft

During 2000, law enforcement agencies provided additional information regarding types of vehicles stolen. The agencies reported 3,779 autos, 1,057 trucks and buses, and 304 other vehicles stolen.

The age group of 15 accounted for the highest percentage of persons arrested for motor vehicle theft, accounting for 15 percent of the total. Juveniles accounted for 45 percent of all arrests for motor vehicle theft.

Of the persons arrested for motor vehicle theft, 76 percent were White, 18 percent were Black, 6 percent were American Indian/Alaskan Native, and less than one percent were Asian/Pacific Islander.

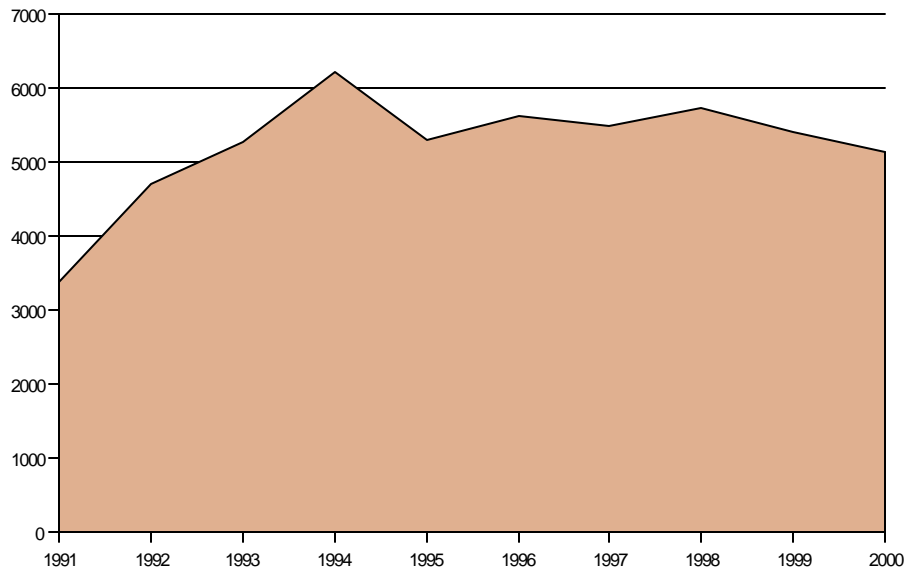
Law enforcement agencies reported property worth \$10,429,267 stolen in motor vehicle thefts.

Table 15
Motor Vehicle Theft
Type of Property Stolen, Recovered *

Type of Property	Value Stolen	Value Recovered
Currency, Notes, Etc.	\$ 26,068	\$ 2,590
Jewelry and Precious Metals	9,901	900
Clothing and Furs	19,496	1,175
Motor Vehicles	9,913,866	7,180,484
Office Equipment	7,793	3,140
Televisions/Radios/Cameras	50,316	2,542
Firearms	32,511	23,450
Household Goods	18,069	0
Consumable Goods	232,075	420
Livestock	0	0
Miscellaneous	119,172	43,699
Total	\$ 10,429,267	\$ 7,258,400

* Property descriptions and values are not provided by Douglas Co. S.O., Omaha P.D., and North Platte P.D.

Figure 12
Motor Vehicle - Ten Year Trend



ARSON

Arson is any willful or malicious burning or attempt to burn, with or without intent to defraud, a dwelling house, public building, motor vehicle or aircraft, personal property of another, etc. The State Fire Marshal's office is the primary source of arson data.

Volume and Rate

During 2000, there were 504 offenses of arson reported. Arson accounted for 0.7 percent of the property crimes and 0.7 percent of all index offenses. In 2000, there were 0.3 arsons per 1,000 population. There were 72 arsons cleared in 2000, a 14.3 percent clearance rate.

Analysis of Arson

The total estimated value of property damage due to arson amounted to \$16,102,250 in 2000. Property damage to 227 structures was \$14,984,645. The 167 mobile arsons (motor vehicles and mobile property - trailers, recreational vehicles, airplanes) resulted in \$1,002,895 worth of property damage. In 110 other types of arson, the property damage was \$114,710. The average value of property damage per arson incident was \$31,948.91.

The age group of 10-12 accounted for the greatest percentage of persons arrested for arson, accounting for 30 percent of the total arrested. Juveniles accounted for 82 percent of all arrests for arson.

Of the persons arrested for arson, 86 percent were White, 9 percent were Black, and five percent were American Indian/Alaskan Native.

Figure 13
Arson - Ten Year Trend

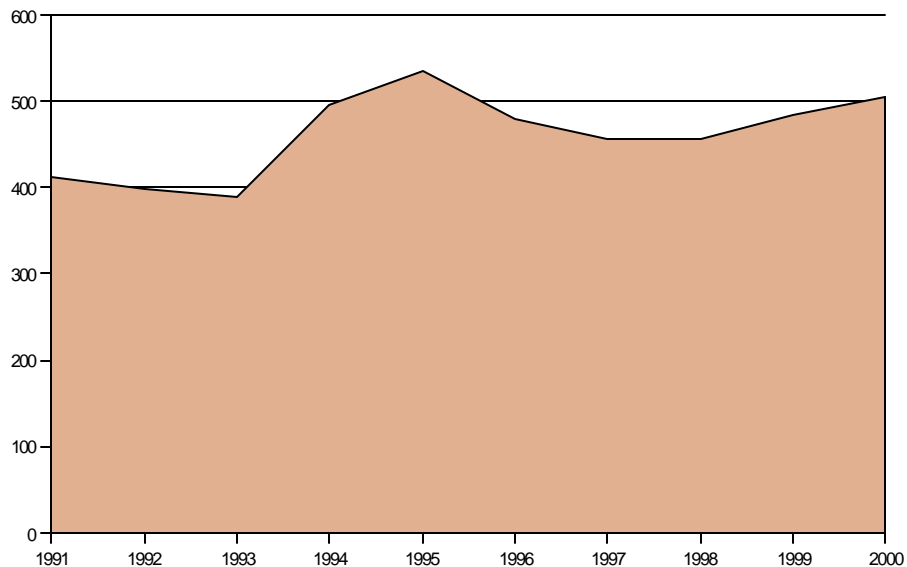


Table 16
Arson - Type of Property and Property Loss

Property Classification		Number of Offenses	Percent Distribution	Value of Property Damage	Average Loss
S T R U C T U R A L	Single Occupancy Residential: House/Townhouse/Duplex/Etc.	123	24.4	\$2,353,615	\$19,135.08
	Other Residential: Apartment/Hotel/Motel/Dorm	21	4.2	5,420,760	258,131.43
	Storage: Barns/Garages/Warehouses/Etc.	31	6.2	321,000	10,354.84
	Industrial/Manufacturing:	3	0.6	2,001,250	667,083.33
	Other Commercial: Stores/Restaurants/Offices/Etc.	15	3.0	3,600,750	240,050.00
	Community/Public: Churches/Jails/Schools/Colleges/ Hospitals/Etc.	30	6.0	1,237,850	41,261.67
	All Other Structures: Out Buildings/Monuments/ Buildings Under Construction	4	0.8	49,420	12,355.00
	M O B I L E	Motor Vehicles: Autos/Trucks/Buses/Motorcycles	163	32.3	967,545
Other Mobile Property: Trailers/Recreational Vehicles/ Airplanes/Boats/Etc.	4	0.8	35,350	8,837.50	
Other: Crops/Timber/Fences/Signs/Etc.	110	21.8	114,710	1,042.82	
Total		504	100.0	\$16,102,250	\$31,948.91

SIMPLE ASSAULT

Simple assault is defined as any assault which does not involve the use of a firearm, knife, cutting instrument, or other dangerous weapon and in which there is no serious or aggravated injury to the victim. Simple assault includes intimidation, assault and battery, coercion, resisting or obstructing an officer, hazing, and attempts to commit all of these acts.

Volume and Rate

During 2000, a total of 14,709 simple assaults were reported by law enforcement agencies in Nebraska. A total of 11,785 simple assaults, 80.1 percent, were cleared in 2000. There were 8.8 simple assaults per 1,000 population.

Analysis of Simple Assault

The age group of 25-29 accounted for the greatest percentage of persons arrested for simple assault, 15.1 percent. Juveniles accounted for 18.6 percent of all arrests for simple assault.

Of persons arrested for simple assault, 76 percent were White, 21 percent were Black, 3 percent were American Indian/Alaskan Native, and less than one percent were Asian/Pacific Islander.

DOMESTIC ASSAULT

As a result of the passage of Legislative Bill 889 in 1997, law enforcement agencies began indicating if an aggravated or simple assault was domestic related. This indication was also made on any corresponding arrest. The Omaha Police Department did not provide data on domestic assaults during 2000.

Domestic is defined by state statute as relating to family or household members and includes spouses, ex-spouses, children, persons who are residing together, persons who have resided together in the past, persons who have a child in common, or persons related by consanguinity or affinity.

During 2000, there were a total of 3,933 domestic assaults reported outside of the City of Omaha. There were 359 aggravated domestic assaults which represents 9 percent of the total and 3,574 simple domestic assaults accounting for 91 percent of the total domestic assaults. A total of 2,918 arrests were reported for domestic assaults, with 110 arrested for aggravated domestic assault and 2,808 arrested for simple domestic assault.

Table 17
Number of Domestic Assaults and Arrests - 2000

Type of Assault	Number of Offenses	Percent of Total	Number of Arrests
Aggravated Domestic Assaults	359	9	110
Simple Domestic Assaults	3,574	91	2,808
Total	3,933	100.0	2,918

Figure 14
Offenses of Domestic and Non-Domestic Assaults - 2000

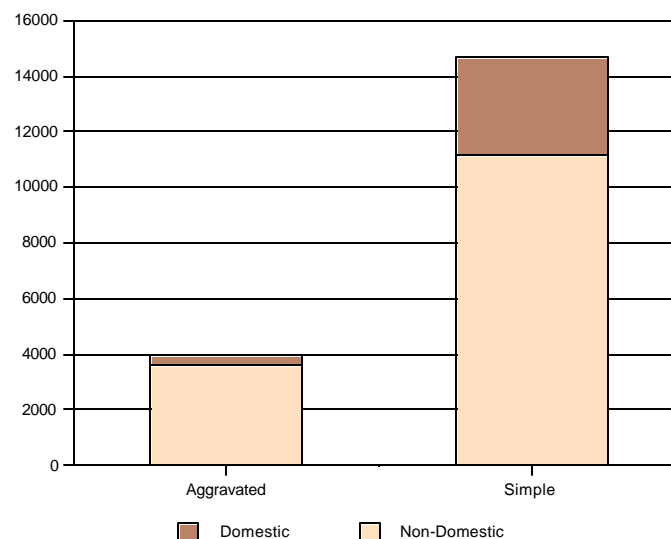


Table 18
Arrests by Age Group - 2000*

Age Group	Aggravated Domestic	Percent of Total	Simple Domestic	Percent of Total
17 and Under	8	7.6	135	5.0
18 - 19	5	4.8	159	5.9
20 - 24	19	18.1	532	19.9
25 - 29	14	13.3	527	19.7
30 - 34	21	20.0	449	16.8
35 - 39	16	15.2	384	14.3
40 - 44	9	8.6	263	9.8
45 - 49	7	6.7	133	5.0
50 And Over	6	5.7	98	3.7
Total	105	100.0	2,680	100.0
Male	74	70.5	2,049	76.5
Female	31	29.5	631	23.5

* Not all agencies were able to provide an age and sex breakdown

Figure 15
Domestic Assault Arrests by Age Group

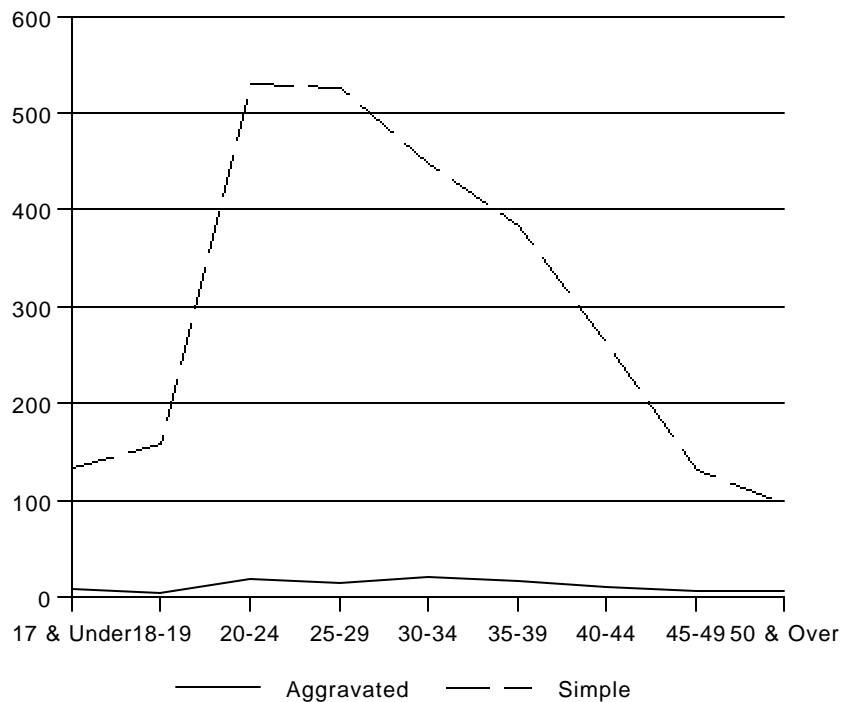


Table 19
Domestic Assaults and Arrests by County, 2000

Agency	Number of Assaults	Number of Arrests
Adams County	136	125
Adams Co. Sheriff's Office	11	12
Hastings P.D.	125	113
Antelope County	4	4
Antelope Co. Sheriff's Office	4	4
Arthur County	0	0
Banner County	0	0
Blaine County	0	0
Boone County	0	0
Box Butte County	60	66
Alliance P.D.	60	66
Boyd County	2	0
Boyd Co. Sheriff's Office	2	0
Brown County	0	0
Buffalo County	115	71
Buffalo Co. Sheriff's Office	33	27
Kearney P.D.	82	44
Burt County	5	6
Tekamah P.D.	4	5
State Patrol	1	1
Butler County	0	0
Cass County	70	31
Cass Co. Sheriff's Office	38	13
Plattsmouth	28	15
State Patrol	4	3
Cedar County	2	1
State Patrol	2	1
Chase County	3	5
Chase Co. Sheriff's Office	2	2
Imperial P.D.	1	3
Cherry County	17	5
Cherry Co. Sheriff's Office	3	1
Valentine P.D.	14	4
Cheyenne County	29	17
Sidney P.D.	29	17
Clay County	1	0
Clay Co. Sheriff's Office	1	0

Domestic Assaults and Arrests by County, 2000

Agency	Number of Assaults	Number of Arrests
Colfax County	47	27
Colfax Co. Sheriff's Office	20	0
Schuyler P.D.	27	27
Cuming County	6	1
Cuming Co. Sheriff's Office	4	1
West Point P.D.	2	0
Custer County	2	3
Custer Co. Sheriff's Office	1	1
Broken Bow P.D.	1	2
Dakota County	118	93
Dakota Co. Sheriff's Office	26	26
So. Sioux City P.D.	92	67
Dawes County	13	11
Dawes Co. Sheriff's Office	3	2
Chadron P.D.	10	9
Dawson County	117	114
Dawson Co. Sheriff's Office	12	15
Lexington P.D.	75	71
Cozad P.D.	18	18
Gothenburg P.D.	11	10
State Patrol	1	0
Deuel County	5	3
Deuel Co. Sheriff's Office	5	3
Dixon County	9	7
Dixon Co. Sheriff's Office	9	7
Dodge County	80	43
Dodge Co. Sheriff's Office	13	11
Fremont P.D.	66	32
State Patrol	1	0
Douglas County	141	36
Douglas Co. Sheriff's Office	93	N
Elkhorn P.D.	9	2
Ralston P.D.	33	28
Valley P.D.	5	4
State Patrol	1	2
Dundy County	3	3
Dundy Co. Sheriff's Office	3	3

Domestic Assaults and Arrests by County, 2000

Agency	Number of Assaults	Number of Arrests
Fillmore County	10	11
Fillmore Co. Sheriff's Office	10	11
Franklin County	2	2
Franklin Co. Sheriff's Office	2	2
Frontier County	3	4
Frontier Co. Sheriff's Office	3	4
Furnas County	10	10
Sheriff's Office	10	10
Gage County	39	25
Gage Co. Sheriff's Office	3	0
Beatrice P.D.	31	20
Wymore P.D.	5	5
Garden County	1	1
Garden Co. Sheriff's Office	1	1
Garfield County	0	0
Gosper County	2	2
Gosper Co. Sheriff's Office	2	2
Grant County	3	2
Grant Co. Sheriff's Office	3	2
Greeley County	3	3
Greeley Co. Sheriff's Office	3	3
Hall County	504	457
Hall Co. Sheriff's Office	27	30
Grand Island P.D.	476	426
State Patrol	1	1
Hamilton County	31	32
Hamilton Co. Sheriff's Office	7	7
Aurora P.D.	23	25
State Patrol	1	0
Harlan County	0	0
Hayes County	0	0
Hitchcock County	0	0
Holt County	15	18
Holt Co. Sheriff's Office	1	2
O'Neill P.D.	14	16
Hooker County	0	0
Howard County	1	0

Domestic Assaults and Arrests by County, 2000

Agency	Number of Assaults	Number of Arrests
Howard Co. Sheriff's Office	1	0
Jefferson County	14	11
Jefferson Co. Sheriff's Office	1	0
Fairbury P.D.	13	11
Johnson County	3	4
Johnson Co. Sheriff's Office	3	4
Kearney County	18	11
Kearney Co. Sheriff's Office	7	2
Minden P.D.	11	9
Keith County	35	39
Keith Co. Sheriff's Office	8	5
Ogallala P.D.	27	34
Keya Paha County	0	0
Kimball County	10	2
Kimball Co. Sheriff's Office	2	2
Kimball P.D.	8	0
Knox County	5	9
Knox Co. Sheriff's Office	4	8
State Patrol	1	1
Lancaster County	1138	785
Lancaster Co. Sheriff's Office	37	33
Lincoln P.D.	1101	752
Lincoln County	166	145
Lincoln Co. Sheriff's Office	18	21
North Platte P.D.	148	124
Logan County	0	0
Loup County	0	0
McPherson County	0	0
Madison County	69	39
Madison Co. Sheriff's Office	4	1
Norfolk P.D.	60	36
State Patrol	5	2
Merrick County	18	20
Merrick Co. Sheriff's Office	12	13
Central City P.D.	6	7

Domestic Assaults and Arrests by County, 2000

Agency	Number of Assaults	Number of Arrests
Morrill County	6	4
Morrill Co. Sheriff's Office	1	1
Bayard P.D.	1	1
Bridgeport P.D.	4	2
Nance County	9	11
Nance Co. Sheriff's Office	9	11
Nemaha County	14	8
Nemaha Co. Sheriff's Office	5	5
Auburn P.D.	9	3
Nuckolls County	0	0
Otoe County	11	9
Otoe Co. Sheriff's Office	1	0
Nebraska City PD	9	9
State Patrol	1	0
Pawnee County	2	1
Sheriff's Office	1	1
State Patrol	1	0
Perkins County	14	4
Perkins Co. Sheriff's Office	14	4
Phelps County	24	10
Phelps Co. Sheriff's Office	1	1
Holdrege P.D.	22	9
State Patrol	1	0
Pierce County	6	5
Pierce Co. Sheriff's Office	3	3
Plainview P.D.	2	2
State Patrol	1	0
Platte County	37	9
Platte Co. Sheriff's Office	8	9
Columbus P.D.	29	0
Polk County	9	8
Polk Co. Sheriff's Office	9	8
Red Willow County	49	43
Red Willow Co. Sheriff's Office	10	6
McCook P.D.	39	37
Richardson County	18	18
Falls City P.D.	18	18

Domestic Assaults and Arrests by County, 2000

Agency	Number of Assaults	Number of Arrests
Rock County	1	0
Rock Co. Sheriff's Office	1	0
Saline County	37	41
Saline Co. Sheriff's Office	3	3
Wilber P.D.	5	4
Crete P.D.	28	33
State Patrol	1	1
Sarpy County	267	214
Sarpy Co. Sheriff's Office	56	39
Bellevue P.D.	136	104
Papillion P.D.	34	29
LaVista P.D.	40	41
State Patrol	1	1
Saunders County	41	38
Saunders Co. Sheriff's Office	19	19
Wahoo P.D.	11	9
Ashland P.D.	10	9
State Patrol	1	1
Scotts Bluff County	157	75
Scotts Bluff Co. Sheriff's Office	35	12
Scottsbluff P.D.	110	49
Gering P.D.	12	14
Seward County	35	28
Seward Co. Sheriff's Office	11	5
Seward P.D.	21	20
Milford P.D.	3	3
Sheridan County	31	19
Sheridan Co. Sheriff's Office	10	3
Gordon P.D.	21	16
Sherman County	0	1
Sherman Co. Sheriff's Office	0	1
Sioux County	0	0
Stanton County	1	2
Stanton Co. Sheriff's Office	1	2
Thayer County	9	7
Thayer Co. Sheriff's Office	8	6
State Patrol	1	1

Domestic Assaults and Arrests by County, 2000

Agency	Number of Assaults	Number of Arrests
Thomas County	0	0
Thurston County	9	9
Thurston Co. Sheriff's Office	9	9
Valley County	3	3
Ord P.D.	3	3
Washington County	32	23
Washington Co. Sheriff's Office	26	17
Blair P.D.	6	6
Wayne County	4	3
Wayne Co. Sheriff's Office	1	1
Wayne P.D.	3	2
Webster County	1	1
Webster Co. Sheriff's Office	1	1
Wheeler County	0	0
York County	22	20
York P.D.	22	20

N - No Reports Submitted

HATE CRIMES

Legislative Bill 90, commonly referred to as the hate crime bill, was passed and signed by the Governor in 1997. LB 90 directed the Commission to establish a repository for the collection and analysis of information regarding criminal offenses committed against individuals or groups or their property because of their race, color, religion, ancestry, national origin, gender, sexual orientation, age, or disability. The criminal offenses are to include: manslaughter; assault in the first, second, or third degree; terroristic threats; stalking; kidnaping; false imprisonment in the first or second degree; sexual assault in the first, second, or third degree; arson in the first, second, or third degree; criminal mischief; and criminal trespass in the first or second degree.

The federal Hate Crime Statistics Act of 1990 required the United States Attorney General to collect data about crimes that manifest evidence of prejudice based on race, religion, sexual-orientation, or ethnicity. Physical and mental disabilities were added in 1994. The crimes included: murder, non-negligent manslaughter, forcible rape, aggravated assault, simple assault, intimidation, arson, destruction, damage or vandalism of property. The Federal Bureau of Investigation (FBI) collects hate crime data through the UCR Program.

The Commission developed a system of collecting data which would meet the requirements of both LB 90 and the federal system of hate crime reporting. Law enforcement agencies are to submit quarterly reports on hate crimes identifying the type of crime committed, a general description of the location, and the type of bias motivation. During 2000, 107 agencies submitted at least one quarterly report and 56 of those reported all four quarters.

Table 20
Hate Crimes by Type of Crime *

Type of Crime	Number	Percent
Aggravated Assault	1	5.0
Simple Assault	4	20.0
Intimidation	7	35.0
Burglary	1	5.0
Vandalism	6	30.0
Trespassing	1	5.0
Total	20	100.0

* More than one type of crime may have been committed within an incident.

**Table 21
Hate Crimes - 2000**

Type of Bias	Number	Percent
Racial	10	55.6
White	1	
Black	7	
American Indian	1	
Asian / Pacific Islander	1	
Ethnicity / National Origin	2	11.1
Hispanic	2	
Other	0	
Religious	2	11.1
Jewish	1	
Other	1	
Sexual	3	16.7
Male Homosexual	2	
Heterosexual	1	
Gender	1	5.6
Total	18	100.0

**Table 22
Hate Crimes by Type of Location**

Location	Number	Percent
Church	1	5.6
Commercial	3	16.7
Gas Station	1	5.6
Residence	6	33.3
School	1	5.6
Public Ares (Street, Park, Etc.)	4	22.2
Other	2	11.1
Total	18	100.0

Table 23
Hate Crimes by Law Enforcement Agency

Law Enforcement Agency	Type of Bias
Buffalo Co. S.O.	Racial (1)
Falls City P.D.	Racial (1)
Johnson Co. S.O.	Gender (1)
Lincoln P.D.	Racial (4) Ethnicity (1) Religious (1)
Lyons P.D.	Ethnicity (1)
McCook P.D.	Racial (3) Sexual Orientation (2)
Omaha P.D.	Racial (1) Sexual Orientation (1) Religious (1)

(This page intentionally left blank)

ARREST DATA

Under the Uniform Crime Reporting Program, an arrest is counted each time a person is taken into custody, summoned, notified, or cited. When a person under the age of 18 commits an offense and the circumstances are such that if the offender were an adult an arrest would be made, the juvenile is counted as an arrest by the reporting agency.

For reporting purposes, one arrest is counted each time a person is taken into custody, regardless of the number of charges placed against him. If an individual is arrested more than once during the year, an arrest is counted each time. When several persons are arrested in connection with the same offense, each is counted as an arrest.

Volume and Rate

Law enforcement agencies in Nebraska reported 98,437 arrests in 2000. There were 57.5 arrests per 1,000 population in 2000 as compared to 60.8 arrests per 1,000 population in 1999.

Arrests for Part I Offenses accounted for 13 percent of the total arrests. Of the arrests for Part I Offenses, larceny-theft accounted for the greatest portion, 75 percent. The greatest percentage of arrests for Part II Offenses (excluding All Other Offenses) was Driving Under the Influence, 14 percent.

During 2000, there were 1,481 arrests for crimes of violence (murder, manslaughter, forcible rape, robbery, and aggravated assault) which accounted for 11 percent of all arrests for Part I Offenses and one percent of the total arrests. There were 11,719 arrests for crimes against property (burglary, larceny-theft, motor vehicle theft, and arson) which accounted for 89 percent of all arrests for Part I Offenses and 12 percent of the total arrests.

Arrests for Part I Offenses decreased 3 percent from 1999. Arrests for Part II Offenses experienced a slight decrease of less than one percent from 1999.

Arrests by Age

The number of persons under the age of 18 (juveniles) arrested during 2000 decreased 6 percent from 1999. The arrests of persons age 18 and over (adults) increased one percent.

The arrest of persons under the age of 25 accounted for the following percentages of the total arrests for each index offense: murder, manslaughter - 41 percent; forcible rape - 46 percent; robbery - 68 percent; aggravated assault - 44 percent; burglary - 73 percent; larceny-theft - 66 percent; motor vehicle theft - 75 percent; and arson - 89 percent. Of those persons under the age of 25 arrested for index offenses, persons under the age of 18 accounted for 66 percent.

Persons under the age of 18 were most often arrested for Larceny-Theft, while adults were most often arrested for Driving Under the Influence and All Other Offenses.

Arrests by Sex

In 2000, males accounted for 76 percent of all arrests. Males accounted for 70 percent of arrests for Part I Offenses and 76 percent of arrests for Part II Offenses. Total male arrests decreased 3 percent from 1999 and female arrests decreased one percent.

Larceny-theft was the crime for which females were most often arrested. Males were most often arrested for Driving Under the Influence.

Arrests by Race

An analysis of total arrests by race for 2000 indicated 78 percent were White, 19 percent were Black, 3 percent were American Indian/Alaskan Native, and less than one percent were Asian/Pacific Islander.

Race distribution figures for the Part I Offenses revealed that 73 percent were White, 23 percent were Black, 4 percent were Indian/Alaskan Native and less than one percent were Asian/Pacific Islander. Race figures for Part II Offenses revealed that 79 percent were White, 18 percent were Black, 2 percent were Indian/Alaskan Native and less than one percent were Asian/Pacific Islander.

An analysis of arrests by race for crimes of violence (murder, manslaughter, forcible rape, robbery and felony assault) revealed that 63 percent were White, 32 percent were Black, 5 percent were American Indian/Alaskan Native, and less than one percent were Asian/Pacific Islander.

Race figures for crimes against property (burglary, larceny-theft, motor vehicle theft and arson) revealed that 74 percent were White, 22 percent were Black, 3 percent were Indian/Alaskan Native and less than one percent were Asian/Pacific Islander.

**Table 24
Total Arrests - 2000**

Offense Classification	Number	Percent Distribution	Rate Per 100,000 Population¹
Murder, Manslaughter	49	.05	2.9
Death by Negligence	17	.02	1.0
Forcible Rape	158	.16	9.2
Robbery	316	.32	18.5
Aggravated Assault	958	.97	56.0
Burglary	1,197	1.22	69.9
Larceny-Theft	9,902	10.06	578.6
Motor Vehicle Theft	472	.48	27.6
Arson	148	.15	8.6
Total Part I Offenses	13,217	13.43	772.35
Simple Assault	10,180	10.34	594.9
Forgery and Counterfeiting	890	.90	52.0
Fraud - O.M.F.P.	2,104	2.14	123.0
Embezzlement	154	.16	9.0
Possession of Stolen Property	1,135	1.15	66.3
Vandalism - Destruction of Property	3,327	3.38	194.4
Weapons-Carrying/Possessing/Etc.	1,077	1.09	62.9
Prostitution and Commercialized Vice	476	.48	27.8
Sex Offenses	712	.72	41.6
Drug Abuse Violations	10,166	10.33	594.1
Gambling	50	.05	2.9
Offenses Against Family and Children	1,519	1.54	88.8
Driving Under the Influence	11,948	12.14	698.2
Liquor Law Violations	11,815	12.00	690.4
Disorderly Conduct/Disturbing the Peace	4,599	4.67	268.7
All Other Offenses (Except Traffic)	23,979	24.36	1,401.2
Curfew and Loitering Law Violations	688	.70	40.2
Runaways	401	.41	23.4
Total Part II Offenses	85,220	86.57	4,979.9
Total	98,437	100.00	5,752.3

¹ 2000 Estimate of Population - 1,711,263

Table 25
Comparison of Arrests, 1999 - 2000 *

Offense Classification	1999	2000	Percent Change
Murder, Manslaughter	45	49	+ 9
Death by Negligence	33	17	-48
Forcible Rape	162	154	- 5
Robbery	321	311	- 3
Aggravated Assault	894	945	+ 6
Burglary	1,158	1,154	0
Larceny-Theft	10,069	9,687	- 4
Motor Vehicle Theft	490	459	- 6
Arson	164	145	-12
Total Part I Offenses	13,336	12,921	- 3
Simple Assault	9,965	9,868	- 1
Forgery and Counterfeiting	845	858	+ 2
Fraud - O.M.F.P.	1,930	2,043	+ 6
Embezzlement	154	154	0
Possession of Stolen Property	1,116	1,110	- 1
Vandalism - Destruction of Property	3,003	3,222	+ 7
Weapons-Carrying/Possessing/Etc.	1,106	1,064	- 4
Prostitution and Commercialized Vice	357	473	+32
Sex Offenses	642	692	+ 8
Drug Abuse Violations	9,063	10,070	+11
Gambling	97	50	-48
Offenses Against Family and Children	1,461	1,486	+ 2
Driving Under the Influence	13,007	11,742	-10
Liquor Law Violations	11,219	11,464	+ 2
Disorderly Conduct/Disturbing the Peace	4,562	4,418	- 3
All Other Offenses (Except Traffic)	23,465	23,667	+ 1
Curfew and Loitering Law Violations	808	669	-17
Runaways	407	376	- 8
Total Part II Offenses	83,207	83,426	0
Total	96,543	96,347	0

* Agencies that reported consistently during 1999 and 2000 were used for comparison purposes.

**Table 26
Juvenile and Adult Arrests, 1999 - 2000 ***

Offense Classification	Juvenile			Adult		
	1999	2000	Percent Change	1999	2000	Percent Change
Murder, Manslaughter	3	3	0	42	46	+10
Death by Negligence	0	1	-	33	16	-52
Forcible Rape	19	22	+16	143	132	- 8
Robbery	89	81	- 9	232	230	- 1
Aggravated Assault	121	120	- 1	773	825	+ 7
Burglary	498	425	-15	660	729	+10
Larceny-Theft	4,427	4,007	- 9	5,642	5,680	+ 1
Motor Vehicle Theft	251	207	-18	239	252	+ 5
Arson	122	119	- 2	42	26	-38
Total Part I Offenses	5,530	4,985	-10	7,806	7,936	+2
Simple Assault	1,853	1,819	- 2	8,112	8,049	- 1
Forgery and Counterfeiting	85	72	-15	760	786	- 3
Fraud - O.M.F.P.	103	109	- 6	1,827	1,934	+ 6
Embezzlement	21	16	-24	133	138	+ 4
Possession of Stolen Property	372	257	-31	744	853	+15
Vandalism - Destruction of Prop.	1,217	1,364	+12	1,786	1,858	+ 4
Weapons-Carrying/Poss./Etc.	224	204	- 9	882	860	- 2
Prostitution and Commercial. Vice	5	9	+80	352	464	+32
Sex Offenses	115	141	+23	527	551	+ 5
Drug Abuse Violations	1,355	1,384	+ 2	7,708	8,686	+13
Gambling	3	2	-33	94	48	-49
Offenses Against Family/Children	26	30	+15	1,435	1,456	+ 1
Driving Under the Influence	483	413	-14	12,524	11,329	-10
Liquor Law Violations	2,763	2,566	- 7	8,456	8,898	+ 5
Disorderly Conduct/Disturb. Peace	866	822	- 5	3,696	3,596	- 3
All Other Offenses (Excpt. Traffic)	3,350	3,131	- 7	20,115	20,536	+ 2
Curfew and Loitering	808	669	-17			
Runaways	407	376	- 8			
Total Part II Offenses	14,056	13,384	- 5	69,151	70,042	+1
Total	19,586	18,369	- 6	76,957	77,978	+1

* Only agencies reporting during 1999 and 2000 were used for comparison purposes.

Table 27
Comparison of Adult and Juvenile Arrests

Offense Classification	Total Arrests	Adult	Juvenile	Percent Distribution	
				Adult	Juvenile
Murder, Manslaughter	49	46	3	93.9	6.1
Death by Negligence	17	16	1	94.1	5.9
Forcible Rape	158	136	22	86.1	13.9
Robbery	316	234	82	74.1	25.9
Aggravated Assault	958	837	121	87.4	12.6
Burglary	1,197	744	453	62.2	37.8
Larceny-Theft	9,902	5,801	4,101	58.6	41.4
Motor Vehicle Theft	472	259	213	54.9	45.1
Arson	148	27	121	18.2	81.8
Total Part I Offenses	13,217	8,100	5,117	61.3	38.7
Simple Assault	10,180	8,289	1,891	81.4	18.6
Forgery and Counterfeiting	890	810	80	91.0	9.0
Fraud - O.M.F.P.	2,104	1,993	111	94.7	5.3
Embezzlement	154	138	16	89.6	10.4
Possession of Stolen Property	1,135	872	263	76.8	23.2
Vandalism - Destruction of Property	3,327	1,926	1,401	57.9	42.1
Weapons-Carrying/Possessing/Etc.	1,077	869	208	80.7	19.3
Prostitution and Commercialized Vice	476	467	9	98.1	1.9
Sex Offenses	712	567	145	79.6	20.4
Drug Abuse Violations	10,166	8,768	1,398	86.2	13.8
Gambling	50	48	2	96.0	4.0
Offenses Against Family and Children	1,519	1,488	31	98.0	2.0
Driving Under the Influence	11,948	11,527	421	96.5	3.5
Liquor Law Violations	11,815	9,131	2,684	77.3	22.7
Disorderly Conduct/Disturb. the Peace	4,599	3,759	840	81.7	18.3
All Other Offenses (Except Traffic)	23,979	20,738	3,241	86.5	13.5
Curfew and Loitering Law Violations	688		688	0.0	100.0
Runaways	401		401	0.0	100.0
Total Part II Offenses	85,220	71,390	13,830	83.8	16.2
Total	98,437	79,490	18,947	80.8	19.2

Crime in Nebraska - 2000

Table 28
Total Arrests by Age

Offense Classification	Under 10	10- 12	13- 14	15	16	17	Total Under 18
Murder, Manslaughter	0	0	0	0	1	2	3
Death by Negligence	0	0	0	0	1	0	1
Forcible Rape	1	1	5	3	5	7	22
Robbery	0	5	9	15	20	33	82
Aggravated Assault	5	9	22	18	35	32	121
Burglary	21	51	136	67	81	97	453
Larceny-Theft	159	686	1,151	720	663	722	4,101
Motor Vehicle Theft	0	10	53	70	47	33	213
Arson	24	45	26	10	10	6	121
Total Part I Offenses	210	807	1,402	903	863	932	5,117
Simple Assault	49	220	550	366	324	382	1,891
Forgery and Counterfeiting	0	3	10	8	27	32	80
Fraud - O.M.F.P.	0	3	13	8	36	51	111
Embezzlement	0	0	0	2	4	10	16
Possession of Stolen Property	1	17	58	45	76	66	263
Vandalism - Destruction of Prop.	93	225	295	202	273	313	1,401
Weapons-Carrying/Poss./Etc.	1	8	35	41	64	59	208
Prostitution and Commercial. Vice	0	0	0	1	0	8	9
Sex Offenses	7	33	65	16	16	8	145
Drug Abuse Violations	12	15	152	225	399	595	1,398
Gambling	0	0	0	0	0	5	2
Offenses Against Family/Children	0	0	7	5	6	13	31
Driving Under the Influence	5	2	5	29	131	249	421
Liquor Law Violations	5	15	158	370	849	1,287	2,684
Disorderly Conduct/Disturb. Peace	13	66	207	141	205	208	840
All Other Offenses (Excpt. Traffic)	43	100	388	461	1,049	1,200	3,241
Curfew and Loitering	1	37	140	168	147	195	688
Runaways	3	20	107	90	104	77	401
Total Part II Offenses	233	764	2,190	2,178	3,710	4,755	13,830
Total	443	1,571	3,592	3,081	4,573	5,687	18,947

Table 28 - Continued

Offense Classification	18	19	20	21	22	23	24	25-29	30-34	35-39	40-44	45-49	50-54	55-59	60-64	Over 65	Total 18 & Over
Murder, Manslaughter	0	5	3	3	1	2	3	4	9	4	4	5	3	0	0	0	46
Death by Negligence	2	0	3	1	0	0	0	1	3	1	1	1	1	0	0	2	16
Forcible Rape	8	11	7	7	9	4	5	22	16	19	15	3	4	3	0	3	136
Robbery	22	28	19	25	13	12	14	27	32	21	14	2	4	1	0	0	234
Aggravated Assault	53	40	56	44	46	35	28	138	123	127	63	48	19	6	7	4	837
Burglary	131	88	83	47	30	22	20	108	92	65	44	5	4	4	1	0	744
Larceny-Theft	654	509	391	301	231	189	188	739	699	697	525	306	172	69	48	83	5,801
Motor Vehicle Theft	37	26	25	20	15	11	6	40	32	25	14	5	2	1	0	0	259
Arson	2	5	2	1	0	1	0	3	7	3	2	0	0	0	1	0	27
Total Part I Offenses	909	712	589	449	345	276	264	1,082	1,013	962	682	375	209	84	57	92	8,100
Simple Assault	406	421	422	381	386	355	341	1,489	1,297	1,193	831	432	188	63	48	36	8,289
Forgery and Counterfeiting	81	59	49	50	40	40	35	137	99	120	50	26	13	9	2	0	810
Fraud - O.M.F.P.	72	93	117	105	96	101	90	321	303	263	206	114	63	24	12	13	1,993
Embezzlement	6	15	5	6	3	7	7	24	25	13	12	11	2	1	1	0	138
Possession of Stolen Property	101	86	75	47	43	43	32	138	97	88	69	27	15	7	2	2	872
Vandalism - Destruction of Prop.	243	243	139	121	101	70	61	272	235	201	122	67	25	13	5	8	1,926
Weapons-Carrying/Poss./Etc.	72	71	51	48	43	44	43	154	112	83	66	35	24	11	6	6	869
Prostitution and Commercial. Vice	11	15	17	9	11	19	15	73	82	94	55	31	14	7	5	9	467
Sex Offenses	14	20	31	24	16	22	14	85	84	81	59	34	38	19	9	17	567
Drug Abuse Violations	789	862	709	580	554	436	351	1,314	1,049	1,002	677	280	120	32	6	7	8,768
Gambling	1	2	0	1	2	1	0	1	5	6	11	4	5	2	3	4	48
Offenses Against Family/Children	17	34	30	55	46	53	58	329	298	255	170	83	37	9	9	5	1,488
Driving Under the Influence	508	658	651	679	607	577	468	1,889	1,398	1,409	1,124	775	388	184	101	111	11,527
Liquor Law Violations	1,906	2,131	1,707	461	308	219	178	599	396	442	359	203	113	59	32	18	9,131
Disorderly Conduct/Disturb. Peace	296	281	266	246	227	168	136	607	418	421	366	181	80	37	16	13	3,759
All Other Offenses (Excpt. Traffic)	1,615	1,769	1,572	1,393	1,140	976	778	3,113	2,410	2,453	1,773	911	453	178	87	117	20,738
8289Total Part II Offenses	6,138	6,760	5,841	4,206	3,623	3,131	2,607	10,545	8,308	8,124	5,950	3,214	1,578	655	344	366	71,390
Total	7,047	7,472	6,430	4,655	3,968	3,407	2,871	11,627	9,321	9,086	6,632	3,589	1,787	739	401	458	79,490

**Table 29
Total Arrests by Sex**

Offense Classification	Persons Arrested		Percent	
	Male	Female	Male	Female
Murder, Manslaughter	40	9	81.6	18.4
Death by Negligence	12	5	70.6	29.4
Forcible Rape	157	1	99.4	0.6
Robbery	288	28	91.1	8.9
Aggravated Assault	777	181	81.1	18.9
Burglary	1,056	141	88.2	11.8
Larceny-Theft	6,414	3,488	64.8	35.2
Motor Vehicle Theft	380	92	80.5	19.5
Arson	137	11	92.6	7.4
Total Part I Offenses	9,261	3,956	70.1	29.9
Simple Assault	7,889	2,291	77.5	22.5
Forgery and Counterfeiting	511	379	57.4	42.6
Fraud - O.M.F.P.	1,247	857	59.3	40.7
Embezzlement	73	81	47.4	52.6
Possession of Stolen Property	943	192	83.1	16.9
Vandalism - Destruction of Property	2,762	565	83.1	16.9
Weapons-Carrying/Possessing/Etc.	994	83	92.3	7.7
Prostitution and Commercialized Vice	241	235	50.6	49.4
Sex Offenses	668	44	93.8	6.2
Drug Abuse Violations	8,206	1,960	80.7	19.3
Gambling	42	8	84.0	16.0
Offenses Against Family and Children	753	766	49.6	50.4
Driving Under the Influence	9,675	2,273	81.0	19.0
Liquor Law Violations	8,466	3,349	71.7	28.3
Disorderly Conduct/Disturbing the Peace	3,571	1,028	77.6	22.4
All Other Offenses (Except Traffic)	18,487	5,492	77.1	22.9
Curfew and Loitering Law Violations	419	269	60.9	39.1
Runaways	198	203	49.4	50.6
Total Part II Offenses	65,145	20,075	76.4	23.6
Total	74,406	24,031	75.6	24.4

**Table 30
Total Arrests by Race**

Offense Classification	Total Arrested	White	Black	American Indian or Alaskan Native	Asian or Pacific Islander
Murder, Manslaughter	49	33	14	2	0
Death by Negligence	17	14	1	2	0
Forcible Rape	158	104	51	2	1
Robbery	316	152	153	11	0
Aggravated Assault	958	645	249	57	7
Burglary	1,197	979	171	43	4
Larceny-Theft	9,902	7,169	2,349	314	70
Motor Vehicle Theft	472	361	85	24	2
Arson	148	127	13	8	0
Total Part I Offenses	13,217	9,584	3,086	463	84
Simple Assault	10,180	7,702	2,066	358	54
Forgery and Counterfeiting	890	684	194	9	3
Fraud - O.M.F.P.	2,104	1,808	251	33	12
Embezzlement	154	110	42	1	1
Possession of Stolen Property	1,135	808	302	22	3
Vandalism - Destruction of Property	3,327	2,614	611	93	9
Weapons-Carrying/Possessing/Etc.	1,077	778	285	13	1
Prostitution and Commercialized Vice	476	293	173	7	3
Sex Offenses	712	616	80	11	5
Drug Abuse Violations	10,166	7,266	2,759	120	21
Gambling	50	31	19	0	0
Offenses Against Family and Children	1,519	1,226	230	55	8
Driving Under the Influence	11,948	10,846	808	260	34
Liquor Law Violations	11,815	10,482	1,042	262	29
Disorderly Conduct/Disturbing the Peace	4,599	3,600	805	188	6
All Other Offenses (Except Traffic)	23,979	17,394	5,913	600	72
Curfew and Loitering Law Violations	688	630	19	33	6
Runaways	401	373	21	5	2
Total Part II Offenses	85,220	67,261	15,620	2,070	269
Total	98,437	76,845	18,706	2,533	353

**Table 31
Total Arrests by Race Under Age 18**

Offense Classification	Total Arrested	White	Black	American Indian or Alaskan Native	Asian or Pacific Islander
Murder, Manslaughter	3	2	1	0	0
Death by Negligence	1	1	0	0	0
Forcible Rape	22	11	10	0	1
Robbery	82	45	35	2	0
Aggravated Assault	121	87	28	6	0
Burglary	453	373	60	18	2
Larceny-Theft	4,101	2,904	1,037	121	39
Motor Vehicle Theft	213	171	35	5	2
Arson	121	105	8	8	0
Total Part I Offenses	5,117	3,699	1,214	160	44
Simple Assault	1,891	1,492	334	51	14
Forgery and Counterfeiting	80	72	6	2	0
Fraud - O.M.F.P.	111	86	23	1	1
Embezzlement	16	13	3	0	0
Possession of Stolen Property	263	180	76	7	0
Vandalism - Destruction of Property	1,401	1,165	203	31	2
Weapons-Carrying/Possessing/Etc.	208	160	44	3	1
Prostitution and Commercialized Vice	9	8	1	0	0
Sex Offenses	145	119	23	3	0
Drug Abuse Violations	1,398	1,140	241	15	2
Gambling	2	0	2	0	0
Offenses Against Family and Children	31	23	7	1	0
Driving Under the Influence	421	406	7	5	3
Liquor Law Violations	2,684	2,561	73	43	7
Disorderly Conduct/Disturbing the Peace	840	683	141	12	4
All Other Offenses (Except Traffic)	3,241	2,688	496	50	7
Curfew and Loitering Law Violations	688	630	19	33	6
Runaways	401	373	21	5	2
Total Part II Offenses	13,830	11,799	1,720	262	49
Total	18,947	15,495	2,934	422	93

Table 32
Total Arrests by Race, Age 18 and Over

Offense Classification	Total Arrested	White	Black	American Indian or Alaskan Native	Asian or Pacific Islander
Murder, Manslaughter	46	31	13	2	0
Death by Negligence	16	13	1	2	0
Forcible Rape	136	93	41	2	0
Robbery	234	107	118	9	0
Aggravated Assault	837	558	221	51	7
Burglary	744	606	111	25	2
Larceny-Theft	5,801	4,265	1,312	193	31
Motor Vehicle Theft	259	190	50	19	0
Arson	27	22	5	0	0
Total Part I Offenses	8,100	5,885	1,872	303	40
Simple Assault	8,289	6,210	1,732	307	40
Forgery and Counterfeiting	810	612	188	7	3
Fraud - O.M.F.P.	1,993	1,722	228	32	11
Embezzlement	138	97	39	1	1
Possession of Stolen Property	872	628	226	15	3
Vandalism - Destruction of Property	1,926	1,449	408	62	7
Weapons-Carrying/Possessing/Etc.	869	618	241	10	0
Prostitution and Commercialized Vice	467	285	172	7	3
Sex Offenses	567	497	57	8	5
Drug Abuse Violations	8,768	6,126	2,518	105	19
Gambling	48	31	17	0	0
Offenses Against Family and Children	1,488	1,203	223	54	8
Driving Under the Influence	11,527	10,440	801	255	31
Liquor Law Violations	9,131	7,921	969	219	22
Disorderly Conduct/Disturbing the Peace	3,759	2,917	664	176	2
All Other Offenses (Except Traffic)	20,738	14,706	5,417	550	65
Total Part II Offenses	71,390	55,462	13,900	1,808	220
Total	79,490	61,347	15,772	2,111	260

Table 33
Drug Abuse Arrests by Sex and Race

Offense Classification	Total	Age		Race			
		Adult	Juvenile	White	Black	Indian	Asian
Sale/Manufacturing	1,183	1,100	83	916	243	19	5
Opium/Cocaine/Derivatives	257	243	14	122	133	2	0
Marijuana	332	284	48	263	55	12	2
Synthetic Narcotics	119	112	7	114	1	2	2
Non-Narcotic Drugs	475	461	14	417	54	3	1
Possession	8,983	7,668	1,315	6,350	2,516	101	16
Opium/Cocaine/Derivatives	455	424	31	209	243	3	0
Marijuana	6,993	5,919	1,074	4,690	2,211	79	13
Synthetic Narcotics	391	378	13	372	12	5	2
Non-Narcotic Drugs	1,144	947	197	1,079	50	14	1
Total	10,166	8,768	1,398	7,266	2,759	120	21

Table 34
Drug Abuse Arrests, 1999 - 2000

Offense Classification	1999	2000	Percent Change	2000 Percent Distribution
Sale/Manufacturing	1,178	1,172	-0.5	11.6
Opium/Cocaine/Derivatives	375	255	-32.0	21.8
Marijuana	316	327	+3.5	27.9
Synthetic Narcotics	116	115	-0.9	9.8
Non-Narcotic Drugs	371	475	+28.0	40.5
Possession	7,885	8,898	+12.8	88.4
Opium/Cocaine/Derivatives	470	453	-3.6	5.1
Marijuana	6,241	6,935	+11.1	77.9
Synthetic Narcotics	220	381	+73.2	4.3
Non-Narcotic Drugs	954	1,129	+18.3	12.7
Total	9,063	10,070	+11.1	100.0

OFFICERS ASSAULTED

The killing or assaulting of a law enforcement officer is a serious problem faced by the law enforcement administrator and should be of the gravest concern to the public at large. Such acts directly affect the functioning of proper law enforcement operations and thus reduce the ability of our law enforcement agencies to combat crime and maintain law and order. The ambitious young person who today considers a career in law enforcement must also consider the risk of being killed or assaulted by a member of the society he is sworn to protect. There were no law enforcement officers killed in the line of duty in 2000.

During 2000, there were 179 assaults on law enforcement officers. While every assault does not result in personal injury to the officer involved, many of them do result in physical harm to the officer and loss of duty time. During 2000, personal injury was involved in 29 percent of the assaults. 32 percent of the assaults occurred while responding to disturbance calls and 70 percent of those were inflicted with hands, fists, or feet.

Figure 16
Officers Assaulted by Time, 2000

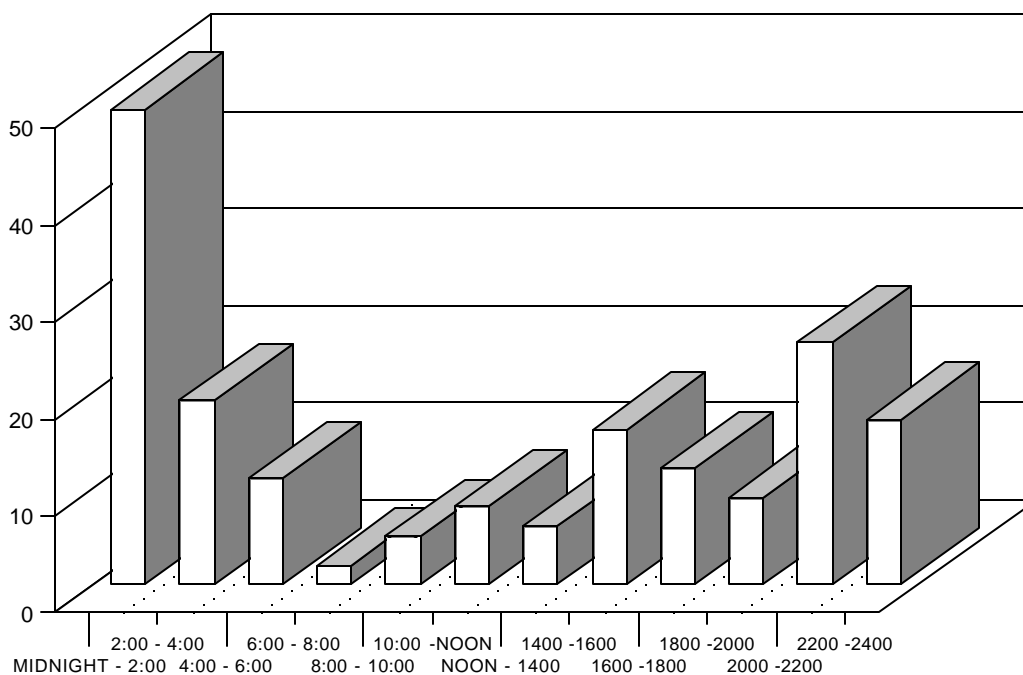


Table 35
Officers Assaulted - Type of Activity, 1999 - 2000

Circumstances	Total Assaults 1999	Total Assaults 2000	Percent Change	Percent Distribution
Disturbance Calls	69	58	-15.9	32.4
Burglaries in Progress	1	1	0	0.6
Robberies in Progress	4	0	-100.0	0.0
Attempting Other Arrests	42	39	- 7.1	21.8
Civil Disorder	5	4	-20.0	2.2
Prisoners in Custody	39	38	- 2.6	21.2
Suspicious Persons/Circum.	11	11	0	6.1
Ambush	1	0	-100.0	0.0
Mentally Deranged	9	3	-66.7	1.7
Traffic Pursuits	28	14	-50.0	7.8
All Other	14	11	-21.4	6.1
Total	223	179	-19.7	100.0

Table 36
Officers Assaulted - Type of Weapon

Circumstances	Firearm	Knife, Cutting Instrument	Other Weapon	Hands, Fists, Feet, Etc.
Disturbance Calls	2	1	7	48
Burglaries in Progress	0	0	0	1
Robberies in Progress	0	0	0	0
Attempting Other Arrests	1	0	4	34
Civil Disorder	0	0	0	4
Prisoners in Custody	1	0	2	35
Suspicious Persons/Circum.	1	0	3	7
Ambush	0	0	0	0
Mentally Deranged	0	2	0	1
Traffic Pursuits	1	2	1	10
All Other	3	0	1	7
Total	9	5	18	147
Number with Personal Injury	5	1	7	39
Number without Personal Injury	4	4	11	108

**Table 37
Officers Assaulted - Type of Assignment**

Circumstances	Two-Man Vehicle	One-Man Vehicle		Detective/ Special Assignment		Other	
		Alone	Assisted	Alone	Assisted	Alone	Assisted
Disturbance Calls	5	19	29	0	0	2	3
Burglaries in Progress	0	0	1	0	0	0	0
Robberies in Progress	0	0	0	0	0	0	0
Attempting Other Arrests	2	14	20	0	0	2	1
Civil Disorder	0	1	0	0	1	2	0
Prisoners in Custody	1	10	10	1	1	2	13
Suspicious Persons/Circum.	0	5	3	0	2	0	1
Ambush	0	0	0	0	0	0	0
Mentally Deranged	0	0	1	0	0	0	2
Traffic Pursuits	1	9	4	0	0	0	0
All Other	0	5	3	1	0	2	0
Total	9	63	71	2	4	10	20

(This page intentionally left blank)

OFFENSE DATA BY COUNTY

Estimates are provided for those agencies not reporting data for all 12 months.

The State Fire Marshal is the primary source for Arson data.

Offense Data By Agency		Number of Months	Population	Crime Rate Per 1,000 Population	Total Crime Index	Index Crimes Cleared	Murder,	Forcible	Robber	Aggravated Assault	Burglary	Larceny-Theft	Motor Vehicle Theft	Arson
Adams County			31,151	37.1	1,155	199	0	2	5	12	137	974	25	0
Sheriff's Office	12		7,087	20.9	148	16	0	0	2	0	29	111	6	0
Hastings P.D.	12		24,064	41.8	1,006	182	0	2	3	12	108	862	19	0
State Patrol	12		--	--	1	1	0	0	0	0	0	1	0	0
Antelope County			7,452	9.5	71	9	0	1	0	0	17	42	10	1
Sheriff's Office *	11		5,801	11.9	69	9	0	1	0	0	17	41	10	0
Neligh P.D. *	1		1,651	0.6	1									1
State Patrol	12		--	--	1	0	0	0	0	0	0	1	0	0
Arthur County			444	6.8	3	0	0	0	0	0	2	1	0	0
Sheriff's Office	12		444	2.3	1	0	0	0	0	0	0	1	0	0
State Patrol	12		--	--	2	0	0	0	0	0	2	0	0	0
Banner County			819	1.2	1	0	0	1	0	0	0	0	0	0
Sheriff's Office	0		819											0
State Patrol	12		--	--	1	0	0	1	0	0	0	0	0	0
Blaine County			583	1.7	1	0	0	0	0	0	0	0	0	1
Sheriff's Office	0		583	1.7	1									1
State Patrol	12		--	--	0	0	0	0	0	0	0	0	0	0
Boone County			6,259	7.8	49	12	0	2	0	1	3	39	4	0
Sheriff's Office	12		4,462	6.7	30	4	0	2	0	0	2	24	2	0
Albion P.D. *	11		1,797	10.6	19	8	0	0	0	1	1	15	2	0
State Patrol	12		--	--	0	0	0	0	0	0	0	0	0	0
Box Butte County			12,158	22.0	268	96	0	2	2	19	42	184	13	6
Sheriff's Office	12		3,199	5.9	19	8	0	1	0	2	7	9	0	0
Alliance P.D.	12		8,959	27.7	248	87	0	1	2	17	35	174	13	6
State Patrol	12		--	--	1	1	0	0	0	0	0	1	0	0
Boyd County			2,438	8.6	21	4	1	0	0	4	4	11	1	0
Sheriff's Office *	11		2,438	8.2	20	3	1	0	0	4	4	10	1	0
State Patrol	12		--	--	1	1	0	0	0	0	0	1	0	0
Brown County			3,525	14.2	50	9	0	0	0	2	9	38	0	1
Sheriff's Office	12		3,525	14.2	50	9	0	0	0	2	9	38	0	1
State Patrol	12		--	--	0	0	0	0	0	0	0	0	0	0

* Estimated

Offense Data By Agency	Number of Months	Population	Crime Rate Per 1,000 Population	Total Crime Index	Index Crimes Cleared	Murder,	Forcible	Robber	Aggravated Assault	Burglary	Larceny-Theft	Motor Vehicle Theft	Arson
Buffalo County		42,259	46.8	1,977	254	1	7	3	93	401	1382	86	4
Sheriff's Office	12	14,828	26.5	393	40	1	3	1	21	109	243	13	2
Kearney P.D.	12	27,431	54.1	1,483	207	0	4	2	71	273	1058	73	2
UNK - Public Safety	12	--	--	92	3	0	0	0	1	19	72	0	0
State Patrol	12	--	--	9	4	0	0	0	0	0	9	0	0
Burt County		7,791	15.0	117	16	0	0	1	5	32	74	4	1
Sheriff's Office	12	4,936	10.3	51	2	0	0	0	3	17	27	3	1
Lyons P.D.	12	963	14.5	14	11	0	0	0	1	3	9	1	0
Tekamah P.D.	12	1,892	27.0	51	2	0	0	1	0	12	38	0	0
State Patrol	12	--	--	1	1	0	0	0	1	0	0	0	0
Butler County		8,767	9.8	86	10	0	0	0	3	16	62	3	2
Sheriff's Office	12	6,170	6.3	39	0	0	0	0	0	6	32	0	1
David City P.D.	12	2,597	18.1	47	10	0	0	0	3	10	30	3	1
State Patrol	12	--	--	0	0	0	0	0	0	0	0	0	0
Cass County		24,334	19.4	473	54	0	3	0	24	90	294	56	6
Sheriff's Office	12	17,447	18.5	322	31	0	2	0	12	72	205	27	4
Plattsmouth P.D.	12	6,887	20.2	139	20	0	1	0	9	17	81	29	2
State Patrol	12	--	--	12	3	0	0	0	3	1	8	0	0
Cedar County		9,615	4.0	38	0	0	0	0	0	8	30	0	0
Sheriff's Office *	10	9,615	3.8	37	0	0	0	0	0	7	30	0	0
State Patrol	12	--	--	1	0	0	0	0	0	1	0	0	0
Chase County		4,068	6.1	25	13	0	0	0	4	3	17	1	0
Sheriff's Office *	10	2,086	4.8	10	7	0	0	0	0	2	7	1	0
Imperial P.D.	12	1,982	7.1	14	5	0	0	0	3	1	10	0	0
State Patrol	12	--	--	1	1	0	0	0	1	0	0	0	0
Cherry County		6,148	29.4	181	39	0	1	1	21	18	133	7	0
Sheriff's Office	12	3,328	4.2	14	4	0	0	0	3	4	7	0	0
Valentine P.D.	12	2,820	59.2	167	35	0	1	1	18	14	126	7	0
State Patrol	12	--	--	0	0	0	0	0	0	0	0	0	0
Cheyenne County		9,830	24.7	243	43	0	0	2	1	45	187	5	1
Sheriff's Office	0	3,548											0
Sidney P.D. *	11	6,282	38.2	240	40	0	0	2	1	45	187	4	1
State Patrol	12	--	--	3	3	0	0	0	2	0	0	1	0
Clay County		7,039	1.4	10	0	0	1	0	0	0	0	0	9
Sheriff's Office	2	7,039		9									9
State Patrol	12	--	--	1	0	0	1	0	0	0	0	0	0

* Estimated

Offense Data By Agency	Number of Months	Population	Crime Rate Per 1,000 Population	Total Crime Index	Index Crimes Cleared	Murder,	Forcible	Robber	Aggravated Assault	Burglary	Larceny- Theft	Motor Vehicle Theft	Arson
Colfax County		10,441	17.0	177	67	0	0	0	5	30	127	10	5
Sheriff's Office	12	5,070	7.7	39	1	0	0	0	0	10	27	1	1
Schuyler P.D.	12	5,371	25.7	138	60	0	0	0	5	20	100	9	4
State Patrol	12	--	--	0	0	0	0	0	0	0	0	0	0
Cuming County		10,203	7.8	80	11	0	0	0	5	27	46	2	0
Sheriff's Office *	11	6,543	6.1	40	3	0	0	0	3	25	12	0	0
West Point P.D. *	11	3,660	10.7	39	8	0	0	0	1	2	34	2	0
State Patrol	12	--	--	1	0	0	0	0	1	0	0	0	0
Custer County		11,793	10.0	118	13	0	0	0	0	33	80	3	2
Sheriff's Office	12	8,302	8.2	68	10	0	0	0	0	22	45	0	1
Broken Bow P.D.	12	3,491	14.3	50	5	0	0	0	0	11	35	3	1
State Patrol	12	--	--	0	0	0	0	0	0	0	0	0	0
Dakota County		20,253	23.3	471	138	2	2	1	17	68	346	34	1
Sheriff's Office	12	8,328	10.4	87	33	2	2	0	9	30	35	9	0
So. Sioux City P.D.	12	11,925	31.9	381	103	0	0	1	7	38	309	25	1
State Patrol	12	--	--	3	2	0	0	0	1	0	2	0	0
Dawes County		9,060	17.3	157	30	0	1	0	2	22	118	7	7
Sheriff's Office	12	3,426	9.3	32	5	0	0	0	1	7	21	1	2
Chadron P.D.	12	5,634	21.1	119	21	0	0	0	1	14	93	6	5
State Patrol	12	--	--	6	4	0	1	0	0	1	4	0	0
Dawson County		24,365	32.5	791	190	2	2	3	22	159	573	30	0
Sheriff's Office	12	6,572	25.7	169	54	1	1	0	7	28	129	3	0
Lexington P.D.	12	10,011	34.5	345	85	1	0	2	10	56	256	20	0
Cozad P.D.	12	4,163	31.0	129	31	0	1	1	3	27	93	4	0
Gothenburg P.D.	12	3,619	39.8	144	20	0	0	0	1	48	92	3	0
State Patrol	12	--	--	4	0	0	0	0	1	0	3	0	0
Deuel County		2,098	15.7	33	9	0	0	1	0	6	26	0	0
Sheriff's Office	12	2,098	15.7	33	9	0	0	1	0	6	26	0	0
State Patrol	12	--	--	0	0	0	0	0	0	0	0	0	0
Dixon County		6,339	11.7	74	16	0	1	0	3	26	36	8	0
Sheriff's Office	12	6,339	11.4	72	16	0	1	0	2	26	35	8	0
State Patrol	12	--	--	2	0	0	0	0	1	0	1	0	0
Dodge County		36,160	30.1	1,090	169	0	3	3	25	100	910	44	5
Sheriff's Office	12	10,986	18.0	198	9	0	1	0	7	25	156	8	1
Fremont P.D.	12	25,174	35.3	889	160	0	2	3	17	75	752	36	4
State Patrol	12	--	--	3	0	0	0	0	1	0	2	0	0

* Estimated

Offense Data By Agency	Number of Months	Population	Crime Rate Per 1,000 Population	Total Crime Index	Index Crimes Cleared	Murder,	Forcible	Robber	Aggravated Assault	Burglary	Larceny- Theft	Motor Vehicle Theft	Arson
Douglas County		463,585	61.7	28,509	7,608	40	196	882	2,183	3,585	17,994	3,457	252
Sheriff's Office	12	59,414	19.1	1,137	338	2	4	8	108	151	785	68	11
Omaha P.D.	12	390,007	69.5	27,092	7,178	37	192	873	2,063	3,380	16,953	3,354	240
Ralston P.D.	12	6,314	32.9	208	51	0	0	1	4	31	154	18	0
Elkhorn P.D.	12	6,062	12.4	75	30	0	0	0	0	8	62	4	1
Valley P.D.	12	1,788	34.1	61	6	0	0	0	6	15	29	11	0
State Patrol	12	--	--	16	5	1	0	0	2	0	11	2	0
Dundy County		2,292	13.1	30	2	0	0	0	1	5	23	1	0
Sheriff's Office	12	2,292	13.1	30	2	0	0	0	1	5	23	1	0
State Patrol	12	--	--	0	0	0	0	0	0	0	0	0	0
Fillmore County		6,634	15.1	100	19	0	1	0	5	31	61	2	0
Sheriff's Office	12	4,408	18.1	80	9	0	1	0	2	26	49	2	0
Geneva P.D.	12	2,226	7.2	16	8	0	0	0	1	4	11	0	0
State Patrol	12	--	--	4	2	0	0	0	2	1	1	0	0
Franklin County		3,574	11.5	41	14	0	0	0	0	15	24	2	0
Sheriff's Office	12	3,574	11.5	41	14	0	0	0	0	15	24	2	0
State Patrol	12	--	--	0	0	0	0	0	0	0	0	0	0
Frontier County		3,099	23.6	73	17	0	0	0	3	12	55	3	0
Sheriff's Office	12	3,099	23.6	73	17	0	0	0	3	12	55	3	0
State Patrol	12	--	--	0	0	0	0	0	0	0	0	0	0
Furnas County		5,324	14.8	79	17	0	1	0	3	14	59	2	0
Sheriff's Office	12	5,324	14.8	79	17	0	1	0	3	14	59	2	0
State Patrol	12	--	--	0	0	0	0	0	0	0	0	0	0
Gage County		22,993	45.1	1,038	105	1	3	2	18	211	756	43	4
Sheriff's Office	4	8,841	26.2	232	0	0	0	0	0	102	108	21	1
Beatrice P.D.	8	12,496	61.1	763	91	1	3	2	15	100	618	21	3
Wymore P.D.	12	1,656	26.0	43	14	0	0	0	3	9	30	1	0
State Patrol	12	--	--	0	0	0	0	0	0	0	0	0	0
Garden County		2,292	18.3	42	14	0	0	0	1	17	24	0	0
Sheriff's Office	12	2,292	18.3	42	14	0	0	0	1	17	24	0	0
State Patrol	12	--	--	0	0	0	0	0	0	0	0	0	0
Garfield County		1,902	1.1	2	0	0	1	0	0	0	1	0	0
Sheriff's Office	12	1,902	1.1	2	0	0	1	0	0	0	1	0	0
State Patrol	12	--	--	0	0	0	0	0	0	0	0	0	0

* Estimated

Offense Data By Agency	Number of Months	Population	Crime Rate Per 1,000 Population	Total Crime Index	Index Crimes Cleared	Murder,	Forcible	Robber	Aggravated Assault	Burglary	Larceny-Theft	Motor Vehicle Theft	Arson
Gosper County		2,143	11.2	24	5	0	0	0	0	2	21	1	0
Sheriff's Office	12	2,143	10.7	23	4	0	0	0	0	2	20	1	0
State Patrol	12	--	--	1	1	0	0	0	0	0	1	0	0
Grant County		747	24.1	18	10	0	0	0	4	0	12	2	0
Sheriff's Office	12	747	24.1	18	10	0	0	0	4	0	12	2	0
State Patrol	12	--	--	0	0	0	0	0	0	0	0	0	0
Greeley County		2,714	11.4	31	5	0	1	0	0	11	18	1	0
Sheriff's Office	12	2,714	9.9	27	4	0	0	0	0	9	17	1	0
State Patrol	12	--	--	4	1	0	1	0	0	2	1	0	0
Hall County		53,534	63.9	3,423	928	0	23	22	129	555	2,559	131	4
Sheriff's Office	12	10,594	36.0	381	59	0	4	0	12	115	236	13	1
Grand Island P.D.	12	42,940	69.8	2,998	860	0	18	22	117	437	2,283	118	3
State Patrol	12	--	--	44	9	0	1	0	0	3	40	0	0
Hamilton County		9,403	24.1	227	60	0	3	0	4	39	177	4	0
Sheriff's Office	12	5,178	18.2	94	25	0	0	0	1	27	64	2	0
Aurora P.D.	12	4,225	31.0	131	35	0	2	0	3	12	112	2	0
State Patrol	12	--	--	2	0	0	1	0	0	0	1	0	0
Harlan County		3,786	0.3	1	0	0	0	0	0	1	0	0	0
Sheriff's Office	0	3,786											0
State Patrol	12	--	--	1	0	0	0	0	0	1	0	0	0
Hayes County		1,068	0.9	1	0	0	0	0	0	0	1	0	0
Sheriff's Office	0	1,068											0
State Patrol	12	--	--	1	0	0	0	0	0	0	1	0	0
Hitchcock County		3,111	6.1	19	1	0	1	0	1	12	4	1	0
Sheriff's Office	12	3,111	6.1	19	1	0	1	0	1	12	4	1	0
State Patrol	12	--	--	0	0	0	0	0	0	0	0	0	0
Holt County		11,551	12.1	140	34	0	2	0	3	36	96	3	0
Sheriff's Office	12	7,818	9.6	75	8	0	0	0	2	24	49	0	0
O'Neill P.D.	12	3,733	16.1	60	24	0	2	0	1	10	45	2	0
State Patrol	12	--	--	5	2	0	0	0	0	2	2	1	0
Hooker County		783	1.3	1	0	0	0	0	0	1	0	0	0
Sheriff's Office	12	783	0.0	0	0	0	0	0	0	0	0	0	0
State Patrol	12	--	--	1	0	0	0	0	0	1	0	0	0

Offense Data By Agency	Number of Months	Population	Crime Rate Per 1,000 Population	Total Crime Index	Index Crimes Cleared	Murder,	Forcible	Robber	Aggravated Assault	Burglary	Larceny- Theft	Motor Vehicle Theft	Arson
Howard County		6,567	34.9	229	19	0	4	0	8	31	180	4	2
Sheriff's Office	12	6,567	34.9	229	19	0	4	0	8	31	180	4	2
State Patrol	12	--	--	0	0	0	0	0	0	0	0	0	0
Jefferson County		8,333	23.8	198	42	0	0	0	6	32	148	9	3
Sheriff's Office	12	4,071	16.0	65	3	0	0	0	3	11	48	2	1
Fairbury P.D.	12	4,262	31.2	133	39	0	0	0	3	21	100	7	2
State Patrol	12	--	--	0	0	0	0	0	0	0	0	0	0
Johnson County		4,488	10.5	47	3	0	1	0	2	7	31	3	3
Sheriff's Office	12	2,772	15.5	43	2	0	0	0	2	7	31	3	0
Tecumseh P.D.	0	1,716	1.7	3									3
State Patrol	12	--	--	1	1	0	1	0	0	0	0	0	0
Kearney County		6,882	23.0	158	20	0	0	0	2	41	109	6	0
Sheriff's Office	12	3,918	18.9	74	7	0	0	0	0	20	49	5	0
Minden P.D.	12	2,964	28.3	84	13	0	0	0	2	21	60	1	0
State Patrol	12	--	--	0	0	0	0	0	0	0	0	0	0
Keith County		8,875	21.6	192	38	1	4	0	1	29	148	9	0
Sheriff's Office	12	3,945	16.2	64	8	1	0	0	1	13	47	2	0
Ogallala P.D.	12	4,930	25.6	126	29	0	3	0	0	16	100	7	0
State Patrol	12	--	--	2	1	0	1	0	0	0	1	0	0
Keha Paha County		983	1.0	1	1	0	0	0	0	0	1	0	0
Sheriff's Office	12	983	1.0	1	1	0	0	0	0	0	1	0	0
State Patrol	12	--	--	0	0	0	0	0	0	0	0	0	0
Kimball County		4,089	23.0	94	9	0	0	0	1	14	71	8	0
Sheriff's Office	12	1,530	18.3	28	1	0	0	0	1	5	19	3	0
Kimball P.D.	12	2,559	25.4	65	8	0	0	0	0	9	52	4	0
State Patrol	12	--	--	1	0	0	0	0	0	0	0	1	0
Knox County		9,374	7.7	72	10	0	0	1	6	20	41	3	1
Sheriff's Office	12	9,374	7.3	68	9	0	0	1	5	19	40	2	1
State Patrol	12	--	--	4	1	0	0	0	1	1	1	1	0
Lancaster County		250,291	61.1	15,302	3300	3	99	150	974	2,151	11,327	550	48
Sheriff's Office	12	24,710	23.5	581	143	0	3	2	9	125	384	33	25
Lincoln P.D.	12	225,581	62.9	14,184	3122	3	95	147	956	1,974	10,475	511	23
UNL Campus P.D.	12	--	--	512	34	0	0	0	2	52	453	5	0
State Patrol	12	--	--	25	1	0	1	1	7	0	15	1	0

Offense Data By Agency	Number of Months	Population	Crime Rate Per 1,000 Population	Total Crime Index	Index Crimes Cleared	Murder,	Forcible	Robber	Aggravated Assault	Burglary	Larceny- Theft	Motor Vehicle Theft	Arson
Lincoln County		34,632	50.4	1,745	360	0	3	11	142	233	1,296	43	17
Sheriff's Office	12	10,754	17.2	185	14	0	1	1	11	39	127	5	1
North Platte P.D. *	6	23,878	65.1	1,554	342	0	2	10	130	194	1,164	38	16
State Patrol	12	--	--	6	4	0	0	0	1	0	5	0	0
Logan County		774	1.3	1	1	0	0	0	0	0	0	1	0
Sheriff's Office	0	774											0
State Patrol	12	--	--	1	1	0	0	0	0	0	0	1	0
Loup County		712	28.8	2	1	1	0	0	0	1	0	0	0
Sheriff's Office	12	712	0.0	0	0	0	0	0	0	0	0	0	0
State Patrol	12	--	--	2	1	1	0	0	0	1	0	0	0
McPherson County		533	5.6	3	0	0	0	0	0	1	2	0	0
Sheriff's Office	12	533	5.6	3	0	0	0	0	0	1	2	0	0
State Patrol	12	--	--	0	0	0	0	0	0	0	0	0	0
Madison County		35,226	32.2	1,138	246	0	14	3	30	168	879	40	4
Sheriff's Office	12	9,343	12.8	120	18	0	1	0	10	27	75	6	1
Norfolk P.D.	12	23,516	42.1	991	222	0	12	3	15	133	791	34	3
Madison P.D.	0	2,367	--										0
State Patrol	12	--		27	6	0	1	0	5	8	13	0	0
Merrick County		8,204	14.6	120	23	0	0	0	6	20	90	1	3
Sheriff's Office	12	5,206	10.0	52	7	0	0	0	5	12	35	0	0
Central City P.D.	12	2,998	3.0	67	16	0	0	0	1	8	54	1	3
State Patrol	12	--	--	1	0	0	0	0	0	0	1	0	0
Morrill County		5,440	4.1	104	13	0	0	1	5	18	74	6	0
Sheriff's Office	12	2,599	20.0	52	3	0	0	0	2	8	39	3	0
Bayard P.D.	12	1,247	24.9	31	3	0	0	0	0	8	21	2	0
Bridgeport P.D.	12	1,594	13.2	21	7	0	0	1	3	2	14	1	0
State Patrol	12	--	--	0	0	0	0	0	0	0	0	0	0
Nance County		4,038	7.9	32	10	0	0	0	2	8	20	2	0
Sheriff's Office	12	4,038	7.9	32	10	0	0	0	2	8	20	2	0
State Patrol	12	--	--	0	0	0	0	0	0	0	0	0	0
Nemaha County		7,576	15.0	114	13	0	1	0	2	28	76	7	0
Sheriff's Office	12	4,226	8.8	37	1	0	0	0	0	1	31	5	0
Auburn P.D.	12	3,350	22.7	76	12	0	0	0	2	27	45	2	0
State Patrol	12	--	--	1	0	0	1	0	0	0	0	0	0

* Estimated

Offense Data By Agency	Number of Months	Population	Crime Rate Per 1,000 Population	Total Crime Index	Index Crimes Cleared	Murder,	Forcible	Robber	Aggravated Assault	Burglary	Larceny- Theft	Motor Vehicle Theft	Arson
Nuckolls County		5,057	1.6	8	4	0	0	0	0	0	4	1	3
Sheriff's Office	0	3,002		2									2
Superior P.D.	12	2,055	2.4	5	4	0	0	0	0	0	3	1	1
State Patrol	12	--	--	1	0	0	0	0	0	0	1	0	0
Otoe County		15,396	24.6	379	43	2	2	3	3	87	262	17	3
Sheriff's Office *	10	6,406	13.9	89	1	0	1	0	0	29	50	8	1
Nebraska City P.D.	12	7,228	36.0	260	39	0	1	3	3	55	188	8	2
Syracuse P.D.	12	1,762	14.8	26	1	0	0	0	0	2	23	1	0
State Patrol	12	--	--	4	2	2	0	0	0	1	1	0	0
Pawnee County		3,087	14.6	45	1	0	0	0	2	12	26	5	0
Sheriff's Office *	5	3,087	14.6	45	1	0	0	0	2	12	26	5	0
State Patrol	12	--	--	0	0	0	0	0	0	0	0	0	0
Perkins County		3,200	10.3	33	12	0	0	0	2	10	19	2	0
Sheriff's Office	12	3,200	10.3	33	12	0	0	0	2	10	19	2	0
State Patrol	12	--	--	0	0	0	0	0	0	0	0	0	0
Phelps County		9,747	43.2	421	28	0	1	0	13	95	271	36	5
Sheriff's Office	12	4,111	12.4	51	5	0	0	0	2	9	40	0	0
Holdrege P.D.	7	5,636	65.3	368	22	0	1	0	10	86	230	36	5
State Patrol	12	--	--	2	1	0	0	0	1	0	1	0	0
Pierce County		7,857	11.8	93	25	0	1	0	3	20	65	3	1
Sheriff's Office	12	4,730	8.0	38	7	0	0	0	1	10	26	1	0
Pierce P.D.	12	1,774	13.0	23	7	0	0	0	2	3	16	1	1
Plainview P.D.	12	1,353	14.8	20	9	0	0	0	0	1	19	0	0
State Patrol	12	--	--	12	2	0	1	0	0	6	4	1	0
Platte County		31,662	33.7	1,068	34	2	2	2	14	136	840	63	9
Sheriff's Office	12	15,421	11.3	174	12	0	0	0	6	36	116	16	0
Columbus P.D.	12	20,971	42.4	890	19	2	2	2	7	98	723	47	9
State Patrol	12	--	--	4	3	0	0	0	1	2	1	0	0
Polk County		5,639	14.0	79	5	0	0	0	3	21	49	5	1
Sheriff's Office	12	5,639	13.8	78	5	0	0	0	3	21	48	5	1
State Patrol	12	--	--	1	0	0	0	0	0	0	1	0	0
Red Willow County		11,448	30.5	349	94	0	8	4	14	47	254	20	2
Sheriff's Office	12	3,454	12.2	42	10	0	0	1	0	13	21	6	1
McCook P.D.	12	7,994	37.9	303	82	0	8	3	13	34	230	14	1
State Patrol	12	--	--	4	2	0	0	0	1	0	3	0	0

* Estimated

Offense Data By Agency	Number of Months	Population	Crime Rate Per 1,000 Population	Total Crime Index	Index Crimes Cleared	Murder,	Forcible	Robber	Aggravated Assault	Burglary	Larceny- Theft	Motor Vehicle Theft	Arson
Richardson County		9,531	15.1	144	49	1	3	0	1	40	89	6	4
Sheriff's Office	12	4,860	11.5	56	12	0	2	0	1	24	26	1	2
Falls City P.D.	12	4,671	18.6	87	37	0	1	0	0	16	63	5	2
State Patrol	12	--	--	1	0	1	0	0	0	0	0	0	0
Rock County		1,756	12.0	21	1	0	0	0	1	1	19	0	0
Sheriff's Office	12	1,756	12.0	21	1	0	0	0	1	1	19	0	0
State Patrol	12	--	--	0	0	0	0	0	0	0	0	0	0
Saline County		13,843	20.9	289	59	0	4	0	8	58	194	23	2
Sheriff's Office	12	6,054	9.4	57	0	0	0	0	1	21	29	6	0
Crete P.D.	12	6,028	35.5	214	51	0	3	0	5	34	153	17	2
Wilber P.D.	12	1,761	9.1	16	7	0	1	0	1	2	12	10	0
State Patrol	12	--	--	2	1	0	0	0	1	1	0	0	0
Sarpy County		122,595	26.0	3,185	776	1	3	30	40	325	2541	207	38
Sheriff's Office	12	50,151	18.5	926	92	0	1	3	19	140	701	50	12
Bellevue P.D.	12	44,382	34.2	1,519	428	1	1	24	12	134	1,201	125	21
Papillion P.D.	12	16,363	21.1	346	73	0	1	2	5	31	285	20	2
LaVista P.D.	12	11,699	33.2	388	181	0	0	1	3	19	352	10	3
State Patrol	12	--	--	6	2	0	0	0	1	1	2	2	0
Saunders County		19,830	11.8	234	58	0	2	0	7	60	145	14	6
Sheriff's Office	12	13,626	9.3	127	23	0	0	0	2	42	67	13	3
Wahoo P.D.	12	3,942	17.0	67	19	0	2	0	4	14	46	0	1
Ashland P.D.	12	2,262	15.9	36	14	0	0	0	0	4	29	1	2
State Patrol	12	--	--	4	2	0	0	0	1	0	3	0	0
Scotts Bluff County		36,951	33.9	1,252	290	1	10	7	48	187	958	35	6
Sheriff's Office	12	12,637	14.9	188	24	0	4	0	9	38	129	7	1
Scottsbluff P.D.	12	14,732	59.6	878	234	1	6	7	36	121	681	21	5
Gering P.D.	12	7,751	17.7	137	27	0	0	0	2	21	108	6	0
Mitchell P.D.	12	1,831	23.5	43	5	0	0	0	1	5	37	0	0
State Patrol	12	--	--	6	0	0	0	0	0	2	3	1	0
Seward County		16,496	23.1	378	53	0	0	1	3	96	252	20	9
Sheriff's Office *	8	8,107	21.1	168	19	0	0	0	1	63	90	14	3
Seward P.D.	12	6,319	24.1	152	30	0	0	0	2	20	122	4	4
Milford P.D.	12	2,070	24.6	51	0	0	0	1	0	12	36	0	2
State Patrol	12	--	--	7	4	0	0	0	0	1	4	2	0

* Estimated

Offense Data By Agency	Number of Months	Population	Crime Rate Per 1,000 Population	Total Crime Index	Index Crimes Cleared	Murder,	Forcible	Robber	Aggravated Assault	Burglary	Larceny- Theft	Motor Vehicle Theft	Arson
Sheridan County		6,198	35.3	219	100	1	0	2	19	44	137	6	3
Sheriff's Office	12	4,442	18.9	84	23	0	0	2	5	35	40	2	0
Gordon P.D.	12	1,756	76.3	134	76	1	0	0	13	9	97	4	3
State Patrol	12	--	--	1	1	0	0	0	1	0	0	0	0
Sherman County		3,318	16.3	54	8	1	0	0	0	16	35	2	0
Sheriff's Office *	10	3,318	16.3	54	8	1	0	0	0	16	35	2	0
State Patrol	12	--	--	0	0	0	0	0	0	0	0	0	0
Sioux County		1,475	3.4	5	0	0	0	0	0	2	3	0	0
Sheriff's Office	12	1,475	3.4	5	0	0	0	0	0	2	3	0	0
State Patrol	12	--	--	0	0	0	0	0	0	0	0	0	0
Stanton County		6,455	10.8	70	17	0	0	0	1	14	53	2	0
Sheriff's Office	12	6,455	10.5	68	16	0	0	0	0	14	52	2	0
State Patrol	12	--	--	2	1	0	0	0	1	0	1	0	0
Thayer County		6,055	11.9	72	10	0	0	0	3	19	45	3	2
Sheriff's Office	12	6,055	11.9	72	10	0	0	0	3	19	45	3	2
State Patrol	12	--	--	0	0	0	0	0	0	0	0	0	0
Thomas County		729	0.0	0	0	0	0	0	0	0	0	0	0
Sheriff's Office	0	729											0
State Patrol	12	--	--	0	0	0	0	0	0	0	0	0	0
Thurston County		7,171	2.2	16	5	0	0	0	3	1	0	1	11
Sheriff's Office	12	7,171	2.2	16	5	0	0	0	3	1	0	1	11
State Patrol	12	--	--	0	0	0	0	0	0	0	0	0	0
Valley County		4,647	6.5	30	9	0	0	0	1	10	19	0	0
Sheriff's Office	0	2,378											0
Ord P.D.	12	2,269	13.2	30	9	0	0	0	1	10	19	0	0
State Patrol	12	--	--	0	0	0	0	0	0	0	0	0	0
Washington County		18,780	17.5	329	83	0	2	0	13	71	227	15	1
Sheriff's Office	12	10,709	11.6	124	11	0	0	0	3	34	82	5	0
Blair P.D.	12	8,071	25.2	203	70	0	2	0	9	37	144	10	1
State Patrol	12	--	--	2	2	0	0	0	1	0	1	0	0
Wayne County		9,851	13.2	130	27	0	2	2	3	19	95	5	4
Sheriff's Office	12	4,268	4.7	20	2	0	0	0	0	3	14	0	3
Wayne P.D. *	11	5,583	19.5	109	24	0	2	2	3	15	81	5	1
State Patrol	12	--	--	1	1	0	0	0	0	1	0	0	0

* Estimated

Offense Data By Agency	Number of Months	Populatio n	Crime Rate Per 1,000 Population	Total Crime Index	Index Crimes Cleared	Murder,	Forcible	Robber	Aggravated Assault	Burglary	Larceny- Theft	Motor Vehicle Theft	Arson
Webster County		4,061	17.0	69	15	0	0	0	3	16	49	1	0
Sheriff's Office	12	4,061	17.0	69	15	0	0	0	3	16	49	1	0
State Patrol	12	--	--	0	0	0	0	0	0	0	0	0	0
Wheeler County		886	20.3	18	2	0	0	0	0	7	10	1	0
Sheriff's Office	12	886	20.3	18	1	0	0	0	0	7	10	1	0
State Patrol	12	--	--	0	1	0	0	0	0	0	0	0	0
York County		14,598	25.1	366	72	0	0	1	2	27	327	8	1
Sheriff's Office	12	6,517	14.0	91	20	0	0	0	2	10	75	4	0
York P.D.	12	8,081	33.9	274	52	0	0	1	0	17	251	4	1
State Patrol	12	--	--	1	0	0	0	0	0	0	1	0	0
Nebraska State Patrol	12	--	--	21	6	0	1	0	13	0	7	0	0

ARREST DATA BY COUNTY

Arrest Data by Agency	Total Arrests	Total Adult	Total Juvenile	Murder, Manslaughter	Death by Negligence	Forcible Rape	Robbery	Aggravated Assault	Burglary	Larceny - Theft	Motor Vehicle Theft	Simple Assault	Arson	Forgery	Fraud	Embezzlement	Stolen Property Offenses	Vandalism	Weapons Violations	Prostitution	Sex Offenses	Drug Abuse Violations	Gambling	Offenses Against Family	Driving Under the Influence	Liquor Law Violations	Disorderly Conduct	All Other Offenses	Curfew and Loitering	Runaways	
Adams County	1849	1448	401	0	0	0	4	10	22	219	6	316	1	11	52	8	8	87	13	0	17	94	2	35	122	350	78	376	18	0	
Sheriff's Office	481	461	20	0	0	0	2	1	4	30	3	36	0	8	31	0	0	7	4	0	6	18	0	31	19	35	0	246	0	0	
Hastings P.D.	1170	818	352	0	0	0	2	9	18	188	3	279	1	3	21	8	6	79	8	0	11	64	0	3	70	188	77	114	18	0	
State Patrol	198	169	29	0	0	0	0	0	0	1	0	1	0	0	0	0	2	1	1	0	0	12	2	1	33	127	1	16	0	0	
Antelope County	65	49	16	0	0	1	0	0	2	4	0	8	0	0	2	0	0	0	0	0	2	1	0	0	25	16	0	4	0	0	
Sheriff's Office	32	29	3	0	0	1	0	0	2	4	0	8	0	0	2	0	0	0	0	0	1	1	0	0	13	0	0	0	0	0	
Neligh P.D.	N																														
State Patrol	33	20	13	0	0	0	0	0	0	0	0	0	0	0	0	0	0	0	0	0	1	0	0	0	12	16	0	4	0	0	
Arthur County	0	0	0	0	0	0	0	0	0	0	0	0	0	0	0	0	0	0	0	0	0	0	0	0	0	0	0	0	0	0	0
Sheriff's Office	0	0	0	0	0	0	0	0	0	0	0	0	0	0	0	0	0	0	0	0	0	0	0	0	0	0	0	0	0	0	0
State Patrol	0	0	0	0	0	0	0	0	0	0	0	0	0	0	0	0	0	0	0	0	0	0	0	0	0	0	0	0	0	0	0
Banner County	14	13	1	0	0	0	0	0	0	0	0	0	0	0	0	0	0	0	0	0	0	0	0	0	2	10	0	2	0	0	
Sheriff's Office	N																														
State Patrol	14	13	1	0	0	0	0	0	0	0	0	0	0	0	0	0	0	0	0	0	0	0	0	0	2	10	0	2	0	0	
Blaine County	0	0	0	0	0	0	0	0	0	0	0	0	0	0	0	0	0	0	0	0	0	0	0	0	0	0	0	0	0	0	0
Sheriff's Office	N																														
State Patrol	0	0	0	0	0	0	0	0	0	0	0	0	0	0	0	0	0	0	0	0	0	0	0	0	0	0	0	0	0	0	0
Boone County	137	120	17	0	0	2	0	0	3	6	4	5	0	0	3	1	0	1	1	0	1	5	2	0	43	56	0	4	0	0	
Sheriff's Office	82	77	5	0	0	2	0	0	3	1	3	0	0	0	2	0	0	0	0	0	0	3	0	0	29	37	0	2	0	0	
Albion P.D. *	41	29	12	0	0	0	0	0	0	5	1	5	0	0	1	0	0	1	1	0	1	2	0	0	11	13	0	0	0	0	
State Patrol	14	14	0	0	0	0	0	0	0	0	0	0	0	0	0	1	0	0	0	0	0	0	2	0	3	6	0	2	0	0	
Box Butte County	951	689	262	0	0	2	1	19	24	73	13	180	5	7	1	0	1	44	6	0	5	74	0	18	142	133	41	162	0	0	
Sheriff's Office	58	37	21	0	0	1	0	5	7	2	0	7	0	1	0	0	0	0	3	0	0	11	0	0	7	7	0	7	0	0	
Alliance P.D.	851	620	231	0	0	1	1	14	17	71	13	173	5	6	1	0	1	43	3	0	5	60	0	18	125	103	41	150	0	0	
State Patrol	42	32	10	0	0	0	0	0	0	0	0	0	0	0	0	0	0	1	0	0	0	3	0	0	10	23	0	5	0	0	
Boyd County	27	16	11	0	0	0	0	0	0	1	0	0	0	0	0	0	0	0	0	0	0	1	0	0	7	15	1	2	0	0	
Sheriff's Office *	18	13	5	0	0	0	0	0	0	1	0	0	0	0	0	0	0	0	0	0	0	0	0	0	7	8	1	1	0	0	
State Patrol	9	3	6	0	0	0	0	0	0	0	0	0	0	0	0	0	0	0	0	0	0	1	0	0	0	7	0	1	0	0	
Brown County	52	52	0	0	0	0	0	0	0	1	0	1	0	0	7	0	0	0	1	0	0	2	0	0	32	3	0	5	0	0	
Sheriff's Office	40	40	0	0	0	0	0	0	0	1	0	1	0	0	7	0	0	0	1	0	0	0	0	0	27	0	0	3	0	0	
State Patrol	12	12	0	0	0	0	0	0	0	0	0	0	0	0	0	0	0	0	0	0	0	2	0	0	5	3	0	2	0	0	
Buffalo County	2229	1819	410	1	0	3	3	31	36	115	23	251	0	43	139	9	20	79	18	0	9	145	2	31	271	329	93	532	0	46	
Sheriff's Office	567	475	92	1	0	2	0	10	9	12	3	72	0	5	55	1	1	21	5	0	1	21	0	6	73	66	3	187	0	13	
Kearney P.D.	1480	471	309	0	0	1	3	20	26	102	20	173	0	38	83	8	16	57	13	0	7	66	0	25	168	213	90	318	0	33	
UNK - Public Safety	61	56	5	0	0	0	0	1	1	0	0	4	0	0	0	0	0	1	0	0	0	14	0	0	5	34	0	1	0	0	
State Patrol	121	117	4	0	0	0	0	0	0	1	0	2	0	0	1	0	3	0	0	0	1	44	2	0	25	16	0	26	0	0	

* Not a Complete 12-Month Total

N - No Reports Submitted

Arrest Data by Agency	Total Arrests	Total Adult	Total Juvenile	Murder, Manslaughter	Death by Negligence	Forcible Rape	Robbery	Aggravated Assault	Burglary	Larceny - Theft	Motor Vehicle Theft	Simple Assault	Arson	Forgery	Fraud	Embezzlement	Stolen Property Offenses	Vandalism	Weapons Violations	Prostitution	Sex Offenses	Drug Abuse Violations	Gambling	Offenses Against Family	Driving Under the Influence	Liquor Law Violations	Disorderly Conduct	All Other Offenses	Curfew and Loitering	Runaways
Burt County	163	111	52	0	0	0	0	3	1	5	2	10	0	0	27	0	1	2	0	0	0	10	1	1	30	45	2	13	7	3
Sheriff's Office	46	40	6	0	0	0	0	1	0	0	0	1	0	0	20	0	0	0	0	0	0	1	0	0	6	6	0	10	0	1
Tekamah P.D.	42	29	13	0	0	0	0	0	1	0	0	7	0	0	6	0	1	1	0	0	0	6	0	0	10	6	0	2	0	2
Lyons P.D.	53	25	28	0	0	0	0	1	0	5	2	2	0	0	0	0	1	0	0	0	0	2	0	0	4	26	2	1	7	0
State Patrol	22	17	5	0	0	0	0	1	0	0	0	0	0	0	1	0	0	0	0	0	0	1	1	1	10	7	0	0	0	0
Butler County	110	80	30	0	0	0	0	1	3	6	1	3	0	0	0	0	2	2	7	0	0	19	2	0	14	38	0	12	0	0
Sheriff's Office	8	3	5	0	0	0	0	0	0	0	0	0	0	0	0	0	0	2	0	0	0	0	0	0	0	6	0	0	0	0
David City P.D.	53	31	22	0	0	0	0	1	3	6	1	3	0	0	0	0	0	0	0	0	0	7	0	0	7	25	0	0	0	0
State Patrol	49	46	3	0	0	0	0	0	0	0	0	0	0	0	0	0	2	0	7	0	0	12	2	0	7	7	0	12	0	0
Cass County	882	771	111	0	0	1	0	12	17	14	8	69	0	5	131	0	4	8	6	0	5	89	0	15	150	24	13	307	3	1
Sheriff's Office	542	535	7	0	0	1	0	4	12	7	4	26	0	3	131	0	3	0	4	0	2	18	0	13	95	7	0	212	0	0
Plattsmouth P.D.	266	163	103	0	0	0	0	6	5	7	4	40	0	2	0	0	1	8	1	0	3	47	0	2	30	11	13	82	3	1
State Patrol	74	73	1	0	0	0	0	2	0	0	0	3	0	0	0	0	0	1	0	0	0	24	0	0	25	6	0	13	0	0
Cedar County	132	121	11	0	0	0	0	1	0	5	0	3	0	0	8	0	0	0	4	0	4	6	0	2	45	27	0	1	0	0
Sheriff's Office *	90	87	3	0	0	0	0	1	0	5	0	2	0	0	8	0	0	0	4	0	4	2	0	2	36	0	0	0	0	0
State Patrol	42	34	8	0	0	0	0	0	0	0	0	1	0	0	0	0	0	0	0	0	0	4	0	0	9	27	0	1	0	0
Chase County	152	101	51	0	0	0	0	4	0	2	0	5	0	0	0	0	0	2	0	0	0	13	0	1	43	67	1	14	0	0
Sheriff's Office *	18	14	4	0	0	0	0	0	0	0	0	2	0	0	0	0	0	2	0	0	0	2	0	1	3	2	0	6	0	0
Imperial P.D.	53	37	16	0	0	0	0	3	0	2	0	3	0	0	0	0	0	0	0	0	0	2	0	0	20	22	1	0	0	0
State Patrol	81	50	31	0	0	0	0	1	0	0	0	0	0	0	0	0	0	0	0	0	0	9	0	0	20	43	0	8	0	0
Cherry County	228	185	43	0	0	0	0	8	0	25	5	21	0	1	3	0	0	9	3	2	0	18	0	3	21	30	3	67	9	0
Sheriff's Office	34	33	1	0	0	0	0	2	0	0	0	0	0	1	3	0	0	1	0	0	0	0	0	3	4	5	0	15	0	0
Valentine P.D.	150	112	38	0	0	0	0	6	0	25	5	21	0	0	0	0	0	8	3	2	0	13	0	0	2	9	3	44	9	0
State Patrol	44	40	4	0	0	0	0	0	0	0	0	0	0	0	0	0	0	0	0	0	0	5	0	0	15	16	0	8	0	0
Cheyenne County	322	265	57	0	0	0	0	2	9	32	1	36	0	0	0	0	1	3	3	0	0	42	0	0	62	65	22	42	0	2
Sheriff's Office	N																													
Sidney P.D. *	173	131	42	0	0	0	0	1	9	32	0	36	0	0	0	0	0	3	2	0	0	10	0	0	22	22	22	14	0	0
State Patrol	149	134	15	0	0	0	0	1	0	0	1	0	0	0	0	0	1	0	1	0	0	32	0	0	40	43	0	28	0	2
Clay County	19	15	4	0	0	0	0	0	0	0	0	0	0	0	0	0	0	0	0	0	0	0	0	0	9	9	0	1	0	0
Sheriff's Office *	4	3	1	0	0	0	0	0	0	0	0	0	0	0	0	0	0	0	0	0	0	0	0	0	3	0	0	1	0	0
State Patrol	15	12	3	0	0	0	0	0	0	0	0	0	0	0	0	0	0	0	0	0	0	0	0	0	6	9	0	0	0	0
Colfax County	593	452	141	0	0	0	0	5	23	33	15	61	3	16	9	0	19	18	4	0	1	48	0	6	124	84	1	100	7	16
Sheriff's Office	101	89	12	0	0	0	0	0	7	0	2	15	0	0	8	0	13	0	2	0	0	3	0	0	16	15	0	20	0	0
Schuyler P.D.	446	319	127	0	0	0	0	5	16	33	13	46	3	16	1	0	6	18	2	0	1	41	0	6	81	56	1	78	7	16
State Patrol	46	44	2	0	0	0	0	0	0	0	0	0	0	0	0	0	0	0	0	0	0	4	0	0	27	13	0	2	0	0
Cuming County	151	118	33	0	0	0	0	3	3	4	0	20	0	2	3	0	4	0	1	0	0	9	0	0	46	50	0	6	0	0
Sheriff's Office *	26	26	0	0	0	0	0	1	0	0	0	0	0	0	2	0	2	0	0	0	0	4	0	0	8	7	0	2	0	0
West Point P.D. *	71	50	21	0	0	0	0	1	3	4	0	20	0	2	1	0	2	0	1	0	0	1	0	0	20	14	0	2	0	0
State Patrol	54	42	12	0	0	0	0	1	0	0	0	0	0	0	0	0	0	0	0	0	0	4	0	0	18	29	0	2	0	0

* Not a Complete 12-Month Total

N - No Reports Submitted

Arrest Data by Agency	Total Arrests	Total Adult	Total Juvenile	Murder, Manslaughter	Death by Negligence	Forcible Rape	Robbery	Aggravated Assault	Burglary	Larceny - Theft	Motor Vehicle Theft	Simple Assault	Arson	Forgery	Fraud	Embezzlement	Stolen Property Offenses	Vandalism	Weapons Violations	Prostitution	Sex Offenses	Drug Abuse Violations	Gambling	Offenses Against Family	Driving Under the Influence	Liquor Law Violations	Disorderly Conduct	All Other Offenses	Curfew and Loitering	Runaways
Custer County	208	186	22	0	0	0	0	0	4	18	0	17	2	0	18	0	0	0	2	0	1	8	0	3	43	51	18	18	0	5
Sheriff's Office	88	85	3	0	0	0	0	0	4	12	0	1	1	0	18	0	0	0	0	0	1	3	0	3	21	14	0	10	0	0
Broken Bow P.D.	89	73	16	0	0	0	0	0	0	6	0	16	1	0	0	0	0	0	2	0	0	2	0	0	12	22	18	5	0	5
State Patrol	31	28	3	0	0	0	0	0	0	0	0	0	0	0	0	0	0	0	0	0	0	3	0	0	10	15	0	3	0	0
Dakota County	1390	1024	366	1	0	0	2	13	18	96	1	168	0	6	2	0	3	37	8	0	2	115	0	10	357	275	24	196	55	1
Sheriff's Office	353	255	98	1	0	0	0	7	12	14	1	55	0	1	1	0	1	13	3	0	2	23	0	4	89	68	0	53	5	0
So. Sioux City P.D.	886	637	249	0	0	0	2	6	6	81	0	113	0	4	1	0	2	24	4	0	0	50	0	6	211	193	24	108	50	1
State Patrol	151	132	19	0	0	0	0	0	0	1	0	0	0	1	0	0	0	0	1	0	0	42	0	0	57	14	0	35	0	0
Dawes County	340	305	35	0	0	2	0	0	6	20	6	28	3	0	11	1	1	3	0	0	0	23	0	6	72	112	27	19	0	0
Sheriff's Office	76	58	18	0	0	1	0	0	3	3	3	11	3	0	11	0	0	0	0	0	0	7	0	6	1	22	0	5	0	0
Chadron P.D.	169	156	13	0	0	0	0	0	2	15	3	15	0	0	0	0	0	3	0	0	0	0	0	0	34	61	27	9	0	0
State Patrol	95	91	4	0	0	1	0	0	1	2	0	2	0	0	0	1	1	0	0	0	0	16	0	0	37	29	0	5	0	0
Dawson County	2021	1594	427	8	1	0	9	24	20	140	3	299	3	3	48	0	26	88	26	0	18	153	0	11	247	187	97	557	46	7
Sheriff's Office	529	465	64	7	0	0	0	9	6	32	0	65	0	0	23	0	11	7	4	0	5	20	0	1	46	30	0	260	0	3
Cozad P.D.	368	266	102	0	0	0	4	3	5	24	1	47	3	0	5	0	2	23	3	0	3	28	0	6	32	59	46	53	19	2
Gothenburg P.D.	128	100	28	0	0	0	0	3	0	13	2	16	0	0	1	0	0	2	1	0	0	2	0	1	12	17	8	49	0	1
Lexington P.D.	813	589	224	1	0	0	5	9	9	71	0	171	0	3	19	0	9	56	8	0	10	28	0	3	103	60	43	178	27	0
State Patrol	183	174	9	0	1	0	0	0	0	0	0	0	0	0	0	4	0	10	0	0	0	75	0	0	54	21	0	17	0	1
Deuel County	37	28	9	0	0	0	1	0	0	11	5	7	0	0	0	0	0	0	1	0	2	4	0	0	4	0	0	2	0	0
Sheriff's Office	32	23	9	0	0	0	1	0	0	11	5	7	0	0	0	0	0	0	1	0	2	2	0	0	3	0	0	0	0	0
State Patrol	5	5	0	0	0	0	0	0	0	0	0	0	0	0	0	0	0	0	0	0	0	2	0	0	1	0	0	2	0	0
Dixon County	213	152	61	0	0	1	0	2	2	2	2	23	0	0	23	0	0	6	1	0	2	14	0	7	28	55	12	25	5	3
Sheriff's Office	197	139	58	0	0	1	0	2	2	2	2	23	0	0	23	0	0	6	1	0	2	11	0	7	25	46	12	24	5	3
State Patrol	16	13	3	0	0	0	0	0	0	0	0	0	0	0	0	0	0	0	0	0	0	3	0	0	3	9	0	1	0	0
Dodge County	1566	1299	267	0	1	0	0	7	12	192	0	53	0	5	84	0	3	32	10	0	9	171	0	38	349	191	74	330	0	5
Sheriff's Office	335	299	36	0	1	0	0	3	4	3	0	10	0	1	50	0	1	4	4	0	1	52	0	20	59	61	0	61	0	0
Fremont P.D.	1102	900	202	0	0	0	0	4	8	189	0	43	0	4	34	0	2	28	4	0	8	104	0	18	253	72	74	252	0	5
State Patrol	129	100	29	0	0	0	0	0	0	0	0	0	0	0	0	0	0	0	2	0	0	15	0	0	37	58	0	17	0	0
Douglas County	35828	30401	5427	28	7	53	193	334	286	4517	133	3153	33	351	460	123	555	945	581	465	258	4923	36	376	3568	2832	995	10588	28	7
Sheriff's Office	3573	2995	578	1	0	3	1	27	20	92	9	194	0	8	145	1	24	71	60	0	4	351	0	20	224	467	15	1836	0	0
Omaha P.D.	30697	26195	4502	26	6	50	191	305	262	4401	123	2886	33	334	311	121	518	866	500	465	248	4240	34	351	3056	2066	965	8339	0	0
Elkhorn P.D.	134	88	46	0	0	0	0	0	2	3	0	3	0	0	0	0	2	3	0	0	0	9	0	1	27	37	0	41	2	4
Ralston P.D.	345	226	119	0	0	0	1	1	2	14	1	48	0	7	1	0	5	4	5	0	1	48	0	3	66	66	11	39	22	0
Valley P.D.	193	132	61	0	0	0	0	1	0	4	0	17	0	0	1	1	2	0	9	0	0	8	0	1	32	45	1	65	4	2
State Patrol	886	765	121	1	1	0	0	0	0	3	0	5	0	2	2	0	4	1	7	0	5	267	2	0	163	151	3	268	0	1
Dundy County	46	35	11	0	0	0	0	1	0	0	2	3	0	0	0	0	0	4	0	0	2	4	0	1	10	15	1	3	0	0
Sheriff's Office	34	26	8	0	0	0	0	1	0	0	2	3	0	0	0	0	0	4	0	0	1	4	0	1	6	10	1	1	0	0
State Patrol	12	9	3	0	0	0	0	0	0	0	0	0	0	0	0	0	0	0	0	0	1	0	0	0	4	5	0	2	0	0
Fillmore County	147	121	26	0	0	1	0	6	5	4	3	11	0	3	14	0	0	3	3	0	0	9	0	4	17	41	8	15	0	0
Sheriff's Office	65	63	2	0	0	1	0	3	3	1	3	10	0	2	14	0	0	3	1	0	0	4	0	4	5	0	5	6	0	0
Geneva P.D. *	50	33	17	0	0	0	0	1	2	3	0	1	0	1	0	0	0	0	2	0	0	0	0	0	9	22	3	6	0	0
State Patrol	32	25	7	0	0	0	0	2	0	0	0	0	0	0	0	0	0	0	0	0	0	5	0	0	3	19	0	3	0	0

Arrest Data by Agency	Total Arrests	Total Adult	Total Juvenile	Murder, Manslaughter	Death by Negligence	Forcible Rape	Robbery	Aggravated Assault	Burglary	Larceny - Theft	Motor Vehicle Theft	Simple Assault	Arson	Forgery	Fraud	Embezzlement	Stolen Property Offenses	Vandalism	Weapons Violations	Prostitution	Sex Offenses	Drug Abuse Violations	Gambling	Offenses Against Family	Driving Under the Influence	Liquor Law Violations	Disorderly Conduct	All Other Offenses	Curfew and Loitering	Runaways
Franklin County	136	111	25	0	0	0	0	0	8	6	2	9	0	0	16	0	2	0	0	0	2	2	0	0	17	51	3	18	0	0
Sheriff's Office	134	109	25	0	0	0	0	0	8	6	2	9	0	0	16	0	2	0	0	0	2	2	0	0	17	49	3	18	0	0
State Patrol	2	2	0	0	0	0	0	0	0	0	0	0	0	0	0	0	0	0	0	0	0	0	0	0	2	0	0	0	0	0
Frontier County	107	91	16	0	0	0	0	0	1	3	1	12	0	0	0	1	0	7	0	0	1	1	0	0	21	49	9	1	0	0
Sheriff's Office	85	78	7	0	0	0	0	0	1	3	1	12	0	0	0	1	0	7	0	0	1	1	0	0	16	32	9	1	0	0
State Patrol	22	13	9	0	0	0	0	0	0	0	0	0	0	0	0	0	0	0	0	0	0	0	0	0	5	17	0	0	0	0
Furnas County	138	120	18	0	0	1	0	3	0	5	2	18	0	0	1	0	0	0	1	0	2	11	0	0	43	32	11	6	0	2
Sheriff's Office	128	110	18	0	0	1	0	3	0	5	2	18	0	0	0	0	0	0	0	0	2	7	0	0	41	32	11	4	0	2
State Patrol	10	10	0	0	0	0	0	0	0	0	0	0	0	0	1	0	0	0	1	0	0	4	0	0	2	0	0	2	0	0
Gage County	685	481	204	0	0	1	0	4	7	57	3	80	1	9	6	0	5	34	4	0	6	43	0	8	76	174	21	123	0	23
Sheriff's Office *	35	22	13	0	0	0	0	0	0	0	0	1	0	0	3	0	0	0	0	0	0	2	0	0	9	14	0	6	0	0
Beatrice P.D. *	496	335	161	0	0	1	0	2	7	49	2	73	1	8	1	0	5	31	4	0	3	23	0	7	37	125	16	78	0	23
Wymore P.D.	61	36	25	0	0	0	0	2	0	8	1	6	0	0	2	0	0	3	0	0	2	1	0	1	3	6	5	21	0	0
State Patrol	93	88	5	0	0	0	0	0	0	0	0	0	0	1	0	0	0	0	0	0	1	17	0	0	27	29	0	18	0	0
Garden County	87	74	13	0	0	0	0	3	2	1	0	1	0	0	0	0	0	0	0	0	0	24	0	0	28	9	0	19	0	0
Sheriff's Office	39	35	4	0	0	0	0	2	2	1	0	1	0	0	0	0	0	0	0	0	0	7	0	0	21	4	0	1	0	0
State Patrol	48	39	9	0	0	0	0	1	0	0	0	0	0	0	0	0	0	0	0	0	0	17	0	0	7	5	0	18	0	0
Garfield County	16	14	2	0	0	0	0	0	0	0	0	2	0	0	0	0	0	0	0	0	0	3	0	0	3	8	0	0	0	0
Sheriff's Office	11	9	2	0	0	0	0	0	0	0	0	2	0	0	0	0	0	0	0	0	0	3	0	0	3	3	0	0	0	0
State Patrol	5	5	0	0	0	0	0	0	0	0	0	0	0	0	0	0	0	0	0	0	0	0	0	0	0	5	0	0	0	0
Gosper County	126	99	27	0	0	0	0	0	0	4	1	4	0	0	3	0	0	3	0	0	1	9	0	2	26	49	1	23	0	0
Sheriff's Office *	112	91	21	0	0	0	0	0	0	3	1	4	0	0	3	0	0	3	0	0	1	8	0	2	24	40	1	22	0	0
State Patrol	14	8	6	0	0	0	0	0	0	1	0	0	0	0	0	0	0	0	0	0	0	1	0	0	2	9	0	1	0	0
Grant County	37	29	8	0	0	0	0	0	0	5	1	4	0	0	0	0	0	2	0	0	0	7	0	0	3	14	0	1	0	0
Sheriff's Office	34	27	7	0	0	0	0	0	0	5	1	4	0	0	0	0	0	2	0	0	0	4	0	0	3	14	0	1	0	0
State Patrol	3	2	1	0	0	0	0	0	0	0	0	0	0	0	0	0	0	0	0	0	0	3	0	0	0	0	0	0	0	0
Greeley County	85	58	27	0	0	0	0	0	7	2	0	3	0	0	9	0	1	0	0	0	0	6	0	0	8	43	0	6	0	0
Sheriff's Office	81	54	27	0	0	0	0	0	7	1	0	3	0	0	9	0	1	0	0	0	0	5	0	0	7	43	0	5	0	0
State Patrol	4	4	0	0	0	0	0	0	0	1	0	0	0	0	0	0	0	0	0	0	0	1	0	0	1	0	0	1	0	0
Hall County	5003	3967	1036	0	1	13	9	92	122	651	30	783	3	105	135	0	97	345	78	1	75	478	0	118	391	301	146	969	17	43
Sheriff's Office	980	883	97	0	1	4	0	7	11	18	1	69	0	13	65	0	1	4	3	0	4	33	0	2	73	127	0	544	0	0
Grand Island P.D. ¹	3882	2945	937	0	0	9	9	85	111	626	29	713	3	92	70	0	94	341	73	1	71	404	0	116	263	153	146	413	17	43
State Patrol	141	139	2	0	0	0	0	0	0	7	0	1	0	0	0	0	2	0	2	0	0	41	0	0	55	21	0	12	0	0

¹ Arrest Count is based upon number of charges against a person instead of one person counted once each time they are arrested.

* Not a Complete 12 - Month Total

Arrest Data by Agency	Total Arrests	Total Adult	Total Juvenile	Murder, Manslaughter	Death by Negligence	Forcible Rape	Robbery	Aggravated Assault	Burglary	Larceny - Theft	Motor Vehicle Theft	Simple Assault	Arson	Forgery	Fraud	Embezzlement	Stolen Property Offenses	Vandalism	Weapons Violations	Prostitution	Sex Offenses	Drug Abuse Violations	Gambling	Offenses Against Family	Driving Under the Influence	Liquor Law Violations	Disorderly Conduct	All Other Offenses	Curfew and Loitering	Runaways	
Hamilton County	475	388	87	0	0	1	0	3	8	18	0	70	0	11	22	0	0	0	2	0	8	59	0	12	58	32	31	128	11	1	
Sheriff's Office	69	65	4	0	0	0	0	0	5	4	0	8	0	1	22	0	0	0	0	0	2	3	0	5	13	4	2	0	0	0	
Aurora P.D.	301	223	78	0	0	1	0	3	3	14	0	61	0	10	0	0	0	0	2	0	6	15	0	7	19	17	29	102	11	1	
State Patrol	105	100	5	5	0	0	0	0	0	0	0	1	0	0	0	0	0	0	0	0	0	41	0	0	26	11	0	26	0	0	
Harlan County	22	22	0	0	0	0	0	0	0	0	0	0	0	0	0	0	0	0	0	0	0	3	0	0	5	8	0	6	0	0	
Sheriff's Office	N																														
State Patrol	22	22	0	0	0	0	0	0	0	0	0	0	0	0	0	0	0	0	0	0	0	3	0	0	5	8	0	6	0	0	
Hayes County	3	3	0	0	0	0	0	0	0	0	0	0	0	0	0	0	0	0	0	0	0	2	0	0	0	1	0	0	0	0	
Sheriff's Office	N																														
State Patrol	3	3	0	0	0	0	0	0	0	0	0	0	0	0	0	0	0	0	0	0	0	2	0	0	0	1	0	0	0	0	
Hitchcock County	24	18	6	0	0	0	0	0	0	0	1	0	0	0	0	0	0	0	0	0	0	3	0	0	6	12	0	2	0	0	
Sheriff's Office	2	2	0	0	0	0	0	0	0	0	1	0	0	0	0	0	0	0	0	0	0	0	0	0	0	1	0	0	0	0	
State Patrol	22	16	6	0	0	0	0	0	0	0	0	0	0	0	0	0	0	0	0	0	0	3	0	0	6	11	0	2	0	0	
Holt County	349	250	99	0	0	2	0	3	10	23	0	31	0	1	3	0	5	11	1	0	2	15	0	0	39	60	14	126	0	3	
Sheriff's Office	28	18	10	0	0	0	0	2	5	6	0	5	0	0	0	0	0	1	0	0	0	0	0	0	7	1	0	1	0	0	
O'Neill P.D.	272	195	77	0	0	2	0	1	5	16	0	25	0	1	3	0	5	10	0	0	2	4	0	0	29	38	14	114	0	3	
State Patrol	49	37	12	0	0	0	0	0	0	1	0	1	0	0	0	0	0	0	1	0	0	11	0	0	3	21	0	11	0	0	
Hooker County	3	3	0	0	0	0	0	0	0	0	0	0	0	0	0	0	0	0	0	0	0	0	0	0	3	0	0	0	0	0	
Sheriff's Office	3	3	0	0	0	0	0	0	0	0	0	0	0	0	0	0	0	0	0	0	0	0	0	0	3	0	0	0	0	0	
State Patrol	0	0	0	0	0	0	0	0	0	0	0	0	0	0	0	0	0	0	0	0	0	0	0	0	0	0	0	0	0	0	0
Howard County	202	168	34	0	0	1	0	8	4	1	0	7	0	1	48	0	1	3	0	0	2	12	1	3	54	44	0	5	6	1	
Sheriff's Office	178	145	33	0	0	1	0	8	4	1	0	7	0	1	48	0	0	3	0	0	2	10	0	2	42	42	0	0	6	1	
State Patrol	24	23	1	0	0	0	0	0	0	0	0	0	0	0	0	1	0	0	0	0	0	2	1	1	12	2	0	5	0	0	
Jefferson County	289	189	100	0	0	0	0	2	35	34	16	35	2	7	3	0	2	0	1	0	7	16	0	0	32	73	3	21	0	0	
Sheriff's Office	49	35	14	0	0	0	0	1	4	0	0	0	0	0	0	0	0	0	0	0	0	0	0	0	6	30	0	8	0	0	
Fairbury P.D.	200	117	83	0	0	0	0	1	31	34	16	35	2	7	3	0	0	0	1	0	7	8	0	0	15	34	3	3	0	0	
State Patrol	40	37	3	0	0	0	0	0	0	0	0	0	0	0	0	2	0	0	0	0	0	8	0	0	11	9	0	10	0	0	
Johnson County	120	107	13	0	0	1	0	2	3	2	1	4	0	0	12	0	0	0	0	0	0	4	0	0	43	10	4	34	0	0	
Sheriff's Office	95	89	6	0	0	0	0	2	3	2	1	4	0	0	12	0	0	0	0	0	0	0	0	0	37	1	4	29	0	0	
Tecumseh P.D.	N																														
State Patrol	25	18	7	0	0	1	0	0	0	0	0	0	0	0	0	0	0	0	0	0	0	4	0	0	6	9	0	5	0	0	
Kearney County	159	130	29	0	0	0	0	1	1	6	2	14	0	2	14	0	0	0	0	0	1	13	0	2	39	22	3	39	0	0	
Sheriff's Office	76	69	7	0	0	0	0	0	1	1	1	3	0	1	8	0	0	0	0	0	0	6	0	1	24	9	2	19	0	0	
Minden P.D.	80	58	22	0	0	0	0	1	0	5	1	11	0	1	6	0	0	0	0	0	1	7	0	1	14	13	1	18	0	0	
State Patrol	3	3	0	0	0	0	0	0	0	0	0	0	0	0	0	0	0	0	0	0	0	0	0	0	1	0	0	2	0	0	

N - No Reports Submitted

Arrest Data by Agency	Total Arrests	Total Adult	Total Juvenile	Murder, Manslaughter	Death by Negligence	Forcible Rape	Robbery	Aggravated Assault	Burglary	Larceny - Theft	Motor Vehicle Theft	Simple Assault	Arson	Forgery	Fraud	Embezzlement	Stolen Property Offenses	Vandalism	Weapons Violations	Prostitution	Sex Offenses	Drug Abuse Violations	Gambling	Offenses Against Family	Driving Under the Influence	Liquor Law Violations	Disorderly Conduct	All Other Offenses	Curfew and Loitering	Runaways	
Keith County	445	381	64	1	0	1	0	2	3	23	3	57	0	1	19	4	1	13	2	0	1	38	0	5	86	68	12	102	0	3	
Sheriff's Office	74	72	2	1	0	0	0	2	3	1	1	8	0	0	11	0	0	1	1	0	0	3	0	5	19	10	1	7	0	0	
Ogallala P.D.	262	216	46	0	0	1	0	0	0	22	2	49	0	1	8	4	1	12	0	0	1	18	0	0	32	29	11	68	0	3	
State Patrol	109	93	16	0	0	0	0	0	0	0	0	0	0	0	0	0	0	0	1	0	0	17	0	0	35	29	0	27	0	0	
Keya Paha County	23	22	1	0	0	0	0	0	0	6	0	0	0	0	0	0	0	0	0	0	0	0	0	0	3	14	0	0	0	0	
Sheriff's Office	18	17	1	0	0	0	0	0	0	6	0	0	0	0	0	0	0	0	0	0	0	0	0	0	1	11	0	0	0	0	
State Patrol	5	5	0	0	0	0	0	0	0	0	0	0	0	0	0	0	0	0	0	0	0	0	0	0	2	3	0	0	0	0	
Kimball County	137	107	30	0	1	0	0	1	1	2	0	2	0	0	2	0	2	0	0	0	2	18	0	0	40	48	1	12	5	0	
Sheriff's Office	14	14	0	0	1	0	0	1	0	0	0	2	0	0	2	0	0	0	0	0	2	0	0	0	3	1	0	2	0	0	
Kimball P.D.	72	53	19	0	0	0	0	0	1	2	0	0	0	0	0	0	0	0	0	0	0	3	0	0	23	34	1	3	5	0	
State Patrol	51	40	11	0	0	0	0	0	0	0	0	0	0	0	0	0	2	0	0	0	0	15	0	0	14	13	0	7	0	0	
Knox County	99	74	25	0	0	0	0	7	3	1	2	15	0	0	0	0	0	3	0	0	1	8	0	0	23	20	10	6	0	0	
Sheriff's Office	85	63	22	0	0	0	0	6	3	1	2	15	0	0	0	0	0	3	0	0	0	5	0	0	19	16	9	6	0	0	
State Patrol	14	11	3	0	0	0	0	1	0	0	0	0	0	0	0	0	0	0	0	0	1	3	0	0	4	4	1	0	0	0	
Lancaster County	18908	15243	3665	7	2	47	57	180	155	1547	59	2269	68	126	328	1	189	860	184	0	149	1524	3	514	1678	2245	1612	5104	0	0	
Sheriff's Office	1048	851	197	0	1	1	3	8	24	63	13	87	8	1	12	1	11	51	17	0	13	159	0	33	140	94	28	280	0	0	
Lincoln P.D.	17078	13666	3412	7	1	46	54	171	130	1456	46	2169	60	121	316	0	167	795	162	0	135	1215	3	481	1320	1964	1580	4679	0	0	
UNL Campus Police	218	201	17	0	0	0	0	1	1	28	0	9	0	4	0	0	9	14	1	0	1	18	0	0	24	63	4	41	0	0	
State Patrol	564	525	39	0	0	0	0	0	0	0	0	4	0	0	0	0	2	0	4	0	0	132	0	0	194	124	0	104	0	0	
Lincoln County	1960	1568	392	0	0	4	5	20	26	152	12	256	2	23	128	0	24	68	11	3	18	106	0	24	208	222	164	463	19	2	
Sheriff's Office	471	441	30	0	0	1	0	11	0	1	3	38	0	0	73	0	0	0	0	0	2	18	0	2	40	38	0	244	0	0	
North Platte P.D. *	1346	996	350	0	0	3	5	9	26	148	9	218	2	23	54	0	19	68	9	3	16	58	0	22	125	148	164	196	19	2	
State Patrol	143	131	12	0	0	0	0	0	0	3	0	0	0	0	1	0	5	0	2	0	0	30	0	0	43	36	0	23	0	0	
Logan County	9	7	2	0	0	0	0	0	0	0	1	0	0	0	0	0	0	0	0	0	0	0	0	0	1	7	0	0	0	0	
Sheriff's Office	N																														
State Patrol	9	7	2	0	0	0	0	0	0	0	1	0	0	0	0	0	0	0	0	0	0	0	0	0	1	7	0	0	0	0	
Loup County	1	1	0	0	0	0	0	0	0	0	0	0	0	0	0	0	0	0	0	0	0	0	0	0	1	0	0	0	0	0	
Sheriff's Office	0	0	0	0	0	0	0	0	0	0	0	0	0	0	0	0	0	0	0	0	0	0	0	0	0	0	0	0	0	0	0
State Patrol	1	1	0	0	0	0	0	0	0	0	0	0	0	0	0	0	0	0	0	0	0	0	0	0	1	0	0	0	0	0	
McPherson County	3	3	0	0	0	0	0	0	0	0	0	1	0	0	0	0	0	0	0	0	0	0	0	0	1	0	0	1	0	0	
Sheriff's Office	2	2	0	0	0	0	0	0	0	0	0	1	0	0	0	0	0	0	0	0	0	0	0	0	0	0	0	1	0	0	
State Patrol	1	1	0	0	0	0	0	0	0	0	0	0	0	0	0	0	0	0	0	0	0	0	0	0	1	0	0	0	0	0	
Madison County	2231	1730	501	0	0	3	3	17	15	266	6	127	0	22	16	2	38	44	7	0	12	120	0	13	177	314	232	668	128	1	
Sheriff's Office	130	119	11	0	0	1	1	10	1	7	1	5	0	10	8	0	0	0	0	0	5	4	0	0	21	16	3	36	0	1	
Norfolk P.D.	1974	1505	469	0	0	2	2	7	14	257	5	118	0	12	8	2	37	44	6	0	7	91	0	13	112	266	229	614	128	0	
Madison P.D. *	N	N	N																												
State Patrol	127	106	21	0	0	0	0	0	0	2	0	4	0	0	0	0	1	0	1	0	0	25	0	0	44	32	0	18	0	0	

* Not a Complete 12 - Month Total

N - No Reports Submitted

Arrest Data by Agency	Total Arrests	Total Adult	Total Juvenile	Murder, Manslaughter	Death by Negligence	Forcible Rape	Robbery	Aggravated Assault	Burglary	Larceny - Theft	Motor Vehicle Theft	Simple Assault	Arson	Forgery	Fraud	Embezzlement	Stolen Property Offenses	Vandalism	Weapons Violations	Prostitution	Sex Offenses	Drug Abuse Violations	Gambling	Offenses Against Family	Driving Under the Influence	Liquor Law Violations	Disorderly Conduct	All Other Offenses	Curfew and Loitering	Runaways	
Merrick County	228	181	47	0	0	0	5	7	4	23	0	22	2	6	25	0	5	6	0	0	1	25	0	6	34	25	3	25	0	4	
Sheriff's Office	98	98	0	0	0	0	0	6	2	1	0	6	1	2	23	0	0	1	0	0	1	13	0	6	27	2	3	4	0	0	
Central City P.D.	105	60	45	0	0	0	5	1	2	22	0	16	1	3	2	0	5	5	0	0	0	5	0	0	3	15	0	16	0	4	
State Patrol	25	23	2	0	0	0	0	0	0	0	0	0	0	1	0	0	0	0	0	0	0	7	0	0	4	8	0	5	0	0	
Morrill County	173	142	31	0	0	0	0	3	6	2	0	8	0	1	1	0	0	0	2	0	0	31	0	0	40	34	0	41	4	0	
Sheriff's Office	14	14	0	0	0	0	0	1	1	1	0	1	0	0	1	0	0	0	0	0	0	0	0	0	4	0	0	5	0	0	
Bayard P.D.	23	14	9	0	0	0	0	0	5	0	0	4	0	0	0	0	0	0	0	0	0	0	0	0	5	5	0	0	4	0	
Bridgeport P.D.	38	30	8	0	0	0	0	2	0	1	0	3	0	1	0	0	0	0	0	0	0	0	0	0	11	12	0	8	0	0	
State Patrol	98	84	14	0	0	0	0	0	0	0	0	0	0	0	0	0	0	0	2	0	0	31	0	0	20	17	0	28	0	0	
Nance County	113	83	30	0	0	0	0	1	4	1	4	19	0	0	0	0	1	0	0	0	1	12	0	5	9	46	0	6	0	4	
Sheriff's Office	109	81	28	0	0	0	0	1	4	1	4	19	0	0	0	0	1	0	0	0	1	11	0	5	9	44	0	5	0	4	
State Patrol	4	2	2	0	0	0	0	0	0	0	0	0	0	0	0	0	0	0	0	0	0	1	0	0	0	2	0	1	0	0	
Nemaha County	250	190	60	0	0	0	0	0	3	7	0	16	0	1	5	0	1	4	0	0	3	22	0	1	60	65	6	52	2	2	
Sheriff's Office	78	68	10	0	0	0	0	0	1	0	0	5	0	1	5	0	1	0	0	0	3	6	0	1	31	15	2	7	0	0	
Auburn P.D.	146	99	47	0	0	0	0	0	2	7	0	11	0	0	0	0	0	4	0	0	0	10	0	0	22	44	4	38	2	2	
State Patrol	26	23	3	0	0	0	0	0	0	0	0	0	0	0	0	0	0	0	0	0	0	6	0	0	7	6	0	7	0	0	
Nuckolls County	17	15	2	0	0	0	0	0	0	3	1	0	0	0	0	0	0	0	0	0	1	2	0	0	6	4	0	0	0	0	
Sheriff's Office	N																														
Superior P.D.	5	4	1	0	0	0	0	0	0	3	1	0	0	0	0	0	0	0	0	0	0	0	0	0	1	0	0	0	0	0	0
State Patrol	12	11	1	0	0	0	0	0	0	0	0	0	0	0	0	0	0	0	0	0	1	2	0	0	5	4	0	0	0	0	0
Otoe County	304	236	68	1	0	2	1	5	11	32	8	26	0	4	16	0	2	15	4	0	0	38	0	0	44	42	14	25	3	11	
Sheriff's Office	N																														
Nebraska City P.D.	226	164	62	0	0	2	1	5	9	30	8	25	0	4	15	0	2	11	1	0	0	25	0	0	26	27	14	8	3	10	
Syracuse P.D.	13	9	4	0	0	0	0	0	2	2	0	0	0	0	0	0	0	4	0	0	0	0	0	0	0	2	0	2	0	1	
State Patrol	65	63	2	1	0	0	0	0	0	0	0	1	0	0	1	0	0	0	3	0	0	13	0	0	18	13	0	15	0	0	
Pawnee County	19	11	8	0	0	0	0	1	0	0	0	0	0	0	0	0	0	0	0	0	1	0	0	0	6	9	0	2	0	0	
Sheriff's Office *	13	6	7	0	0	0	0	1	0	0	0	0	0	0	0	0	0	0	0	0	0	0	0	0	3	9	0	0	0	0	
State Patrol	6	5	1	0	0	0	0	0	0	0	0	0	0	0	0	0	0	0	0	0	1	0	0	0	3	0	0	2	0	0	
Perkins County	66	53	13	0	0	0	0	2	6	2	0	5	0	0	14	0	1	3	2	0	0	0	0	0	4	17	2	7	0	1	
Sheriff's Office	66	53	13	0	0	0	0	2	6	2	0	5	0	0	14	0	1	3	2	0	0	0	0	0	4	17	2	7	0	1	
State Patrol	0	0	0	0	0	0	0	0	0	0	0	0	0	0	0	0	0	0	0	0	0	0	0	0	0	0	0	0	0	0	0
Phelps County	128	108	20	0	0	0	0	3	6	13	0	18	0	1	4	0	2	7	0	0	0	26	0	3	20	8	1	16	0	0	
Sheriff's Office	63	59	4	0	0	0	0	2	3	0	0	2	0	0	4	0	1	4	0	0	0	21	0	1	11	4	1	9	0	0	
Holdrege P.D.	48	33	15	0	0	0	0	1	3	13	0	16	0	1	0	0	1	3	0	0	0	2	0	2	0	1	0	5	0	0	
State Patrol	17	16	1	0	0	0	0	0	0	0	0	0	0	0	0	0	0	0	0	0	0	3	0	0	9	3	0	2	0	0	
Pierce County	151	118	33	0	0	0	0	1	10	6	0	8	0	1	13	0	0	0	1	0	0	14	0	1	37	41	1	14	3	0	
Sheriff's Office	63	53	10	0	0	0	0	0	8	1	0	6	0	0	13	0	0	0	1	0	0	2	0	0	23	3	0	6	0	0	
Pierce P.D.	36	25	11	0	0	0	0	0	0	2	0	0	0	0	0	0	0	0	0	0	0	3	0	0	3	25	0	3	0	0	
Plainview P.D.	15	10	5	0	0	0	0	1	2	3	0	1	0	1	0	0	0	0	0	0	0	0	0	0	1	2	1	0	3	0	
State Patrol	37	30	7	0	0	0	0	0	0	0	0	1	0	0	0	0	0	0	0	0	0	9	0	1	10	11	0	5	0	0	

* Not a Complete 12-Month Total

N - No Reports Submitted

Arrest Data by Agency	Total Arrests	Total Adult	Total Juvenile	Murder, Manslaughter	Death by Negligence	Forcible Rape	Robbery	Aggravated Assault	Burglary	Larceny - Theft	Motor Vehicle Theft	Simple Assault	Arson	Forgery	Fraud	Embezzlement	Stolen Property Offenses	Vandalism	Weapons Violations	Prostitution	Sex Offenses	Drug Abuse Violations	Gambling	Offenses Against Family	Driving Under the Influence	Liquor Law Violations	Disorderly Conduct	All Other Offenses	Curfew and Loitering	Runaways
Platte County	1057	774	283	0	0	0	0	6	10	29	2	26	1	6	3	0	0	23	7	0	0	51	0	5	187	251	45	318	15	72
Sheriff's Office	260	197	63	0	0	0	0	5	2	8	2	19	1	3	0	0	0	8	2	0	0	15	0	1	48	91	1	54	0	0
Columbus P.D.	694	486	208	0	0	0	0	1	8	21	0	6	0	3	3	0	0	15	4	0	0	5	0	4	104	149	44	240	15	72
State Patrol	103	91	12	0	0	0	0	0	0	0	0	1	0	0	0	0	0	0	1	0	0	31	0	0	35	11	0	24	0	0
Polk County	74	73	1	0	0	0	0	3	0	3	0	8	0	1	14	0	1	0	0	0	1	11	0	0	18	0	0	14	0	0
Sheriff's Office	62	61	1	0	0	0	0	3	0	3	0	8	0	1	14	0	1	0	0	0	1	6	0	0	14	0	0	11	0	0
State Patrol	12	12	0	0	0	0	0	0	0	0	0	0	0	0	0	0	0	0	0	0	0	5	0	0	4	0	0	3	0	0
Red Willow County	737	547	190	0	0	3	2	15	21	58	12	99	1	14	22	5	7	41	9	0	10	26	0	23	88	109	67	84	13	8
Sheriff's Office	69	45	24	0	0	0	1	0	5	5	4	7	0	0	0	0	0	5	0	0	0	1	0	0	13	10	0	18	0	0
McCook P.D.	631	472	159	0	0	3	1	14	16	52	8	92	1	14	22	5	7	36	8	0	10	20	0	23	61	94	67	56	13	8
State Patrol	37	30	7	0	0	0	0	1	0	1	0	0	0	0	0	0	0	0	1	0	0	5	0	0	14	5	0	10	0	0
Richardson County	350	265	85	0	0	1	0	2	21	36	0	45	3	0	8	0	0	26	1	0	4	14	0	9	59	44	11	55	8	3
Sheriff's Office *	160	136	24	0	0	0	0	2	15	3	0	13	0	0	5	0	0	7	1	0	0	9	0	0	40	22	3	40	0	0
Falls City P.D.	168	110	58	0	0	1	0	0	6	33	0	32	3	0	3	0	0	19	0	0	4	3	0	9	10	14	8	12	8	3
State Patrol	22	19	3	0	0	0	0	0	0	0	0	0	0	0	0	0	0	0	0	0	0	2	0	0	9	8	0	3	0	0
Rock County	33	26	7	0	0	0	0	0	0	2	0	1	0	1	2	0	1	6	0	0	1	0	0	0	9	3	1	6	0	0
Sheriff's Office	24	18	6	0	0	0	0	0	0	2	0	1	0	1	2	0	1	6	0	0	1	0	0	0	5	0	1	4	0	0
State Patrol	9	8	1	0	0	0	0	0	0	0	0	0	0	0	0	0	0	0	0	0	0	0	0	0	4	3	0	2	0	0
Saline County	724	550	174	0	0	2	0	6	5	47	11	101	0	6	4	0	3	10	4	0	4	59	0	23	93	147	58	132	0	9
Sheriff's Office	128	104	24	0	0	0	0	1	1	0	0	8	0	1	1	0	0	0	1	0	0	29	0	0	40	34	1	8	0	3
Wilber P.D.	51	28	23	0	0	1	0	0	0	7	3	7	0	0	0	0	0	2	0	0	0	5	0	0	2	15	0	9	0	0
Crete P.D.	480	367	113	0	0	1	0	5	4	40	8	85	0	5	3	0	3	8	3	0	4	19	0	23	30	70	57	106	0	6
State Patrol	65	51	14	0	0	0	0	0	0	0	0	1	0	0	0	0	0	0	0	0	0	6	0	0	21	28	0	9	0	0
Sarpy County	5463	3661	1802	0	1	2	10	21	74	729	32	709	9	59	18	1	84	259	36	5	39	732	0	108	807	501	295	630	224	78
Sheriff's Office	984	784	200	0	0	1	3	8	43	67	3	122	0	5	7	1	18	46	1	1	10	161	0	17	187	102	11	170	0	0
Bellevue P.D.	2528	1596	932	0	0	0	6	9	25	437	19	384	4	33	3	0	38	136	27	4	9	379	0	47	290	150	164	247	117	0
Papillion P.D.	612	360	252	0	0	1	0	2	3	69	8	80	0	3	7	0	6	37	0	0	7	41	0	9	95	119	15	57	13	40
LaVista P.D.	1111	711	400	0	0	0	1	1	3	156	2	123	5	18	1	0	22	40	7	0	13	88	0	34	173	99	102	91	94	38
State Patrol	228	210	18	0	1	0	0	1	0	0	0	0	0	0	0	0	0	0	1	0	0	63	0	1	62	31	3	65	0	0
Saunders County	775	609	166	0	0	0	0	7	13	24	1	50	0	2	16	0	2	15	1	0	4	107	0	10	140	173	13	170	21	6
Sheriff's Office	383	351	32	0	0	0	0	3	8	3	1	22	0	0	13	0	0	1	1	0	1	65	0	6	76	99	0	84	0	0
Wahoo P.D.	226	119	107	0	0	0	0	3	5	13	0	12	0	1	3	0	0	13	0	0	2	21	0	0	29	51	13	36	19	5
Ashland P.D.	117	95	22	0	0	0	0	0	0	7	0	15	0	1	0	0	1	1	0	0	1	6	0	4	19	17	0	42	2	1
State Patrol	49	44	5	0	0	0	0	1	0	1	0	1	0	0	0	0	1	0	0	0	0	15	0	0	16	6	0	8	0	0
Scotts Bluff County	2112	1625	487	1	0	2	8	15	21	272	8	156	2	4	7	0	11	43	7	0	2	150	0	3	502	414	177	266	39	2
Sheriff's Office	280	277	3	0	0	1	0	1	1	8	2	18	0	1	3	0	1	1	0	0	0	9	0	1	55	4	7	167	0	0
Scottsbluff P.D.	1332	973	359	1	0	1	8	13	14	242	4	84	2	1	0	0	7	40	5	0	2	92	0	0	290	295	154	44	33	0
Gering P.D.	345	252	93	0	0	0	0	0	6	18	2	52	0	1	4	0	2	2	1	0	0	34	0	2	103	58	13	39	6	2
Mitchell P.D.	23	17	6	0	0	0	0	1	0	4	0	1	0	1	0	0	1	0	0	0	0	3	0	0	3	0	3	6	0	0
State Patrol	132	106	26	0	0	0	0	0	0	0	0	1	0	0	0	0	0	0	1	0	0	12	0	0	51	57	0	10	0	0

* Not a Complete 12-Month Total

Arrest Data by Agency	Total Arrests	Total Adult	Total Juvenile	Murder, Manslaughter	Death by Negligence	Forcible Rape	Robbery	Aggravated Assault	Burglary	Larceny - Theft	Motor Vehicle Theft	Simple Assault	Arson	Forgery	Fraud	Embezzlement	Stolen Property Offenses	Vandalism	Weapons Violations	Prostitution	Sex Offenses	Drug Abuse Violations	Gambling	Offenses Against Family	Driving Under the Influence	Liquor Law Violations	Disorderly Conduct	All Other Offenses	Curfew and Loitering	Runaways
Seward County	731	649	82	0	0	0	0	1	6	24	4	53	0	1	12	0	6	4	1	0	4	56	0	16	243	137	10	149	4	0
Sheriff's Office *	137	135	2	0	0	0	0	0	2	4	0	8	0	0	8	0	4	3	0	0	1	8	0	13	22	5	3	56	0	0
Seward P.D.	215	176	39	0	0	0	0	1	4	18	3	39	0	1	3	0	1	1	0	0	3	5	0	2	46	30	3	51	4	0
Milford P.D.	82	75	7	0	0	0	0	0	0	0	0	6	0	0	1	0	0	0	0	0	0	9	0	1	14	29	4	18	0	0
State Patrol	297	263	34	0	0	0	0	0	0	2	1	0	0	0	0	0	1	0	1	0	0	34	0	0	161	73	0	24	0	0
Sheridan County	615	476	139	1	0	0	0	10	15	88	5	59	3	0	10	0	2	31	0	0	2	16	0	7	124	94	43	105	0	0
Sheriff's Office	233	188	45	0	0	0	0	1	12	20	3	24	0	0	7	0	1	16	0	0	2	1	0	2	31	33	25	55	0	0
Gordon P.D.	246	173	73	1	0	0	0	8	3	68	2	34	3	0	2	0	1	14	0	0	0	8	0	5	23	18	18	38	0	0
State Patrol	136	115	21	0	0	0	0	1	0	0	0	1	0	0	1	0	0	1	0	0	0	7	0	0	70	43	0	12	0	0
Sherman County	60	34	26	1	0	0	0	0	3	1	0	1	0	0	0	0	0	0	0	0	0	0	0	0	7	41	0	6	0	0
Sheriff's Office	47	25	22	1	0	0	0	0	3	1	0	1	0	0	0	0	0	0	0	0	0	0	0	0	5	34	0	2	0	0
State Patrol	13	9	4	0	0	0	0	0	0	0	0	0	0	0	0	0	0	0	0	0	0	0	0	0	2	7	0	4	0	0
Sioux County	6	4	2	0	0	0	0	0	0	0	0	0	0	0	0	0	0	0	0	0	0	0	0	0	1	4	0	1	0	0
Sheriff's Office *	0	0	0	0	0	0	0	0	0	0	0	0	0	0	0	0	0	0	0	0	0	0	0	0	0	0	0	0	0	0
State Patrol	6	4	2	0	0	0	0	0	0	0	0	0	0	0	0	0	0	0	0	0	0	0	0	0	1	4	0	1	0	0
Stanton County	236	211	25	0	0	1	0	0	9	12	1	8	0	0	10	0	0	0	0	0	3	26	0	0	61	89	0	16	0	0
Sheriff's Office	222	197	25	0	0	1	0	0	9	12	1	7	0	0	10	0	0	0	0	0	3	26	0	0	54	84	0	15	0	0
State Patrol	14	14	0	0	0	0	0	0	0	0	0	1	0	0	0	0	0	0	0	0	0	0	0	0	7	5	0	1	0	0
Thayer County	54	47	7	0	0	0	0	1	5	3	0	7	0	0	10	0	0	0	0	0	0	8	0	1	3	8	0	8	0	0
Sheriff's Office	35	29	6	0	0	0	0	1	5	3	0	6	0	0	10	0	0	0	0	0	0	2	0	1	3	2	0	2	0	0
State Patrol	19	18	1	0	0	0	0	0	0	0	0	1	0	0	0	0	0	0	0	0	0	6	0	0	0	6	0	6	0	0
Thomas County	4	4	0	0	0	0	0	0	0	0	0	0	0	0	0	0	0	0	0	0	0	0	0	0	2	0	0	2	0	0
Sheriff's Office	N																													
State Patrol	4	4	0	0	0	0	0	0	0	0	0	0	0	0	0	0	0	0	0	0	0	0	0	0	2	0	0	2	0	0
Thurston County	109	109	0	0	1	0	0	3	1	0	1	8	0	0	2	0	1	0	1	0	0	5	1	0	67	5	7	6	0	0
Sheriff's Office	99	99	0	0	1	0	0	3	1	0	1	8	0	0	2	0	1	0	1	0	0	4	0	0	61	4	7	5	0	0
State Patrol	10	10	0	0	0	0	0	0	0	0	0	0	0	0	0	0	0	0	0	0	0	1	1	0	6	1	0	1	0	0
Valley County	95	56	39	0	0	0	0	1	4	4	0	19	1	0	0	0	0	1	1	0	0	4	0	6	14	24	13	3	0	0
Sheriff's Office	N	N	N																											
Ord P.D.	84	46	38	0	0	0	0	1	4	4	0	19	1	0	0	0	0	1	1	0	0	4	0	6	7	21	13	2	0	0
State Patrol	11	10	1	0	0	0	0	0	0	0	0	0	0	0	0	0	0	0	0	0	0	0	0	0	7	3	0	1	0	0
Washington County	946	771	175	0	0	1	2	6	11	49	4	58	0	12	13	0	11	12	2	0	2	119	0	9	135	169	16	312	1	2
Sheriff's Office	430	385	45	0	0	0	0	1	5	16	2	24	0	0	2	0	1	0	1	0	0	63	0	1	64	56	1	193	0	0
Blair P.D.	493	367	126	0	0	1	2	5	6	33	2	33	0	12	11	0	10	12	1	0	2	53	0	7	64	108	15	113	1	2
State Patrol	23	19	4	0	0	0	0	0	0	1	0	0	0	0	0	0	0	0	0	0	0	3	0	1	7	5	0	6	0	0
Wayne County	250	223	27	0	0	0	0	1	4	10	0	15	0	2	3	0	1	2	1	0	1	11	0	0	42	125	3	29	0	0
Sheriff's Office	26	21	5	0	0	0	0	0	0	2	0	6	0	0	0	0	0	0	1	0	0	1	0	0	12	4	0	0	0	0
Wayne P.D. *	216	197	19	0	0	0	0	1	3	8	0	9	0	2	3	0	1	2	0	0	1	8	0	0	25	121	3	29	0	0
State Patrol	8	5	3	0	0	0	0	0	1	0	0	0	0	0	0	0	0	0	0	0	0	2	0	0	5	0	0	0	0	0

* Not a Complete 12-Month Total

N - No Reports Submitted

Arrest Data by Agency	Total Arrests	Total Adult	Total Juvenile	Murder, Manslaughter	Death by Negligence	Forcible Rape	Robbery	Aggravated Assault	Burglary	Larceny - Theft	Motor Vehicle Theft	Simple Assault	Arson	Forgery	Fraud	Embezzlement	Stolen Property Offenses	Vandalism	Weapons Violations	Prostitution	Sex Offenses	Drug Abuse Violations	Gambling	Offenses Against Family	Driving Under the Influence	Liquor Law Violations	Disorderly Conduct	All Other Offenses	Curfew and Loitering	Runaways	
Webster County	123	99	24	0	0	0	0	3	10	7	0	8	0	0	14	0	0	0	0	0	0	1	0	0	15	29	3	32	0	1	
Sheriff's Office	114	90	24	0	0	0	0	3	10	7	0	8	0	0	14	0	0	0	0	0	0	0	0	0	14	25	3	29	0	1	
State Patrol	9	9	0	0	0	0	0	0	0	0	0	0	0	0	0	0	0	0	0	0	0	1	0	0	1	4	0	3	0	0	
Wheeler County	2	2	0	0	0	0	0	0	0	0	1	0	0	0	0	0	1	0	0	0	0	0	0	0	0	0	0	0	0	0	0
Sheriff's Office *	1	1	0	0	0	0	0	0	0	0	1	0	0	0	0	0	0	0	0	0	0	0	0	0	0	0	0	0	0	0	0
State Patrol	1	1	0	0	0	0	0	0	0	0	0	0	0	0	0	0	1	0	0	0	0	0	0	0	0	0	0	0	0	0	0
York County	678	497	181	0	0	3	1	1	7	51	1	64	0	7	48	0	2	30	2	0	0	75	0	12	74	108	20	141	6	25	
Sheriff's Office	200	189	11	0	0	0	0	1	3	1	1	5	0	1	38	0	0	2	0	0	0	28	0	3	30	28	1	58	0	0	
York P.D.	407	239	168	0	0	3	1	0	3	50	0	59	0	6	10	0	2	27	1	0	0	18	0	9	27	72	19	69	6	25	
State Patrol	71	69	2	0	0	0	0	0	1	0	0	0	0	0	0	0	0	1	1	0	0	29	0	0	17	8	0	14	0	0	
Nebraska State Patrol	4	1	3	0	0	0	0	0	0	0	0	4	0	0	0	0	0	0	0	0	0	0	0	0	0	0	0	0	0	0	0

* Not a Complete 12-Month Total