

Crime In Nebraska

1995

NEBRASKA
PUBLICATIONS
CLEARINGHOUSE

JAN 21 1996

NEBRASKA LIBRARY COMMISSION
LINCOLN, NE 68506

UNIFORM CRIME REPORTS



Nebraska Commission on Law Enforcement and Criminal Justice

E. Benjamin Nelson, Governor
Allen L. Curtis, Executive Director

Crime in Nebraska - 1995

Issued by :

The Nebraska Commission on Law Enforcement and Criminal Justice
(Nebraska Crime Commission)
301 Centennial Mall South
P.O. Box 94946
Lincoln, Nebraska 68509
(402) 471-2194

E. Benjamin Nelson, Governor
Allen L. Curtis, Executive Director

Uniform Crime Reporting Section

Marilyn K. Keelan, Statistical Analyst
Cheri L. Walz, Statistical Clerk

Nebraska Publication Clearinghouse Number L2500S00I-1995

In accordance with the Americans with Disabilities Act, the Commission would like to provide reasonable accommodations with respect to persons with disabilities. If you need a reasonable accommodation, please contact the Nebraska Crime Commission. Upon request, this publication may be available in alternate formats.



STATEWIDE CRIME SUMMARY

1995

- A total of 74,541 index offenses were reported or known to law enforcement in 1995.
 - 6,238 violent crimes were reported in 1995:

Murder, Manslaughter	48
Forcible Rape	315
Robbery	1,066
Aggravated Assault	4,809
 - 68,303 property crimes were reported in 1995:

Burglary	10,282
Larceny-Theft	51,750
Motor Vehicle Theft	5,736
Arson	535
 - Larceny-Theft accounted for 69 percent of the total index offenses.
 - 20,049 index offenses were reported cleared in 1995, a clearance rate of 26.9 percent.
 - 90,917 arrests were reported in 1995, an increase of 10 percent over 1994.
 - Persons under the age of 18 accounted for 22.1 percent of the total arrests.
 - One law enforcement officer was killed in the line of duty in 1995.
 - 244 assaults on law enforcement officers were reported in 1995, a 28 percent increase over 1994.
-

CONTENTS

Uniform Crime Reporting Program 1

Crime Index Offenses - 1995 7

 Murder, Manslaughter 11

 Forcible Rape 14

 Robbery 17

 Aggravated Assault. 20

 Burglary 22

 Larceny Theft. 25

 Motor Vehicle Theft 28

 Arson 30

Nebraska Arrest Data 32

Officers Killed and Assaulted 45

Law Enforcement Employee Data. 47

Offense Data by County 53

Arrest Data by County 65

LIST OF TABLES

1	Index Offenses.	8
2	Crimes of Violence and Crimes Against Property, 1994 - 1995	9
3	Type and Value of Property Stolen and Recovered	9
4	Murder Victims by Age, Sex, and Race.	12
5	Known Murder Perpetrators by Age, Sex, and Race	12
6	Murder, Manslaughter Circumstances	12
7	Murder, Manslaughter Type of Weapon	13
8	Rape Relationship of Victim to Offender	15
9	Rape - Age Groups of Victims	15
10	Forcible Rape - Type of Property Stolen, Recovered	15
11	Robbery - Place of Occurrence	18
12	Robbery - Type of Property Stolen, Recovered	18
13	Burglary - Place and Time of Occurrence	23
14	Burglary - Type of Property Stolen and Recovered	23
15	Larceny - Theft.	26
16	Larceny - Theft - Type of Property Stolen, Recovered	26
17	Motor Vehicle Theft - Type of Property Stolen, Recovered	29
18	Arson - Type of Property and Property Loss	31
19	Total Arrests , 1995.	34
20	Comparison of Arrests, 1994 - 1995	35
21	Juvenile and Adult Arrests, 1994 - 1995	36
22	Comparison of Adult and Juvenile Arrests	37
23	Total Arrests by Age	38
24	Total Arrests by Sex	40
25	Total Arrests by Race	41
26	Total Arrests by Race, Under Age 18	42
27	Total Arrests by Race, Age 18 and Over	43
28	Drug Abuse Arrests by Sex and Race	44
29	Drug Abuse Arrests, 1994 - 1995	44
30	Officers Assaulted - Type of Activity, 1994 - 1995	46
31	Officers Assaulted - Type of Weapon	46
32	Officers Assaulted - Type of Assignment	47
33	Law Enforcement Employee Data - County Sheriffs' Departments	48
34	Law Enforcement Employee Data - Cities Over 5,000 Population	50
35	Law Enforcement Employee Data - Cities Under 5,000 Population	51

LIST OF FIGURES

1	Index Offenses by Month	10
2	Violent and Property Crimes by Month	10
3	Murder, Manslaughter by Month	13
4	Relationship of Victim to Offender - Murder, Manslaughter	13
5	Forcible Rape by Month	16
6	Robbery by Month	19
7	Analysis of Robbery by Type of Weapon	19
8	Aggravated Assault by Month	21
9	Aggravated Assault by Type of Weapon	21
10	Burglary by Month	24
11	Larceny - Theft by Month	27
12	Motor Vehicle Theft by Month	29
13	Arson by Month.	30
14	Officers Assaulted by Time	45

Nebraska Uniform Crime Reporting Program

INTRODUCTION

This annual report presents data on crime and arrests reported by law enforcement agencies through the Nebraska Uniform Crime Reporting (UCR) Program. During 1995, 162 law enforcement agencies submitted monthly UCR's to the Nebraska Commission on Law Enforcement and Criminal Justice, hereafter referred to as the Commission, which administers the Nebraska UCR Program. The Nebraska UCR Program submits the data to the National UCR Program which is administered by the Federal Bureau of Investigation.

The National UCR Program - Historical Background*

Recognizing a need for national crime statistics, the International Association of Chiefs of Police (IACP) formed the Committee on Uniform Crime Records in the 1920's to develop a system of uniform police statistics. Establishing offenses known to law enforcement as the appropriate measure, the Committee evaluated various crimes on the basis of their seriousness, frequency of occurrence, pervasiveness in all geographic areas of the country, and likelihood of being reported to law enforcement. After studying state criminal codes and making an evaluation of the recordkeeping practices in use, the Committee in 1929 completed a plan for crime reporting which became the foundation of the UCR Program.

Seven offenses were chosen to serve as an index for gauging fluctuations in the overall volume and rate of crime. Known collectively as the Crime Index, these offenses included the violent crimes of murder and nonnegligent manslaughter, forcible rape, robbery, aggravated assault and the property crimes of burglary, larceny-theft, and motor vehicle theft. By congressional mandate, arson was added as the eighth Index offense in 1979.

During the early planning of the program, it was recognized that the differences among criminal codes precluded a mere aggregation of state statistics to arrive at a national total. Further, because of the variances in punishment for the same offenses in different state codes, no distinction between felony and misdemeanor crimes was possible. To avoid these problems and provide nationwide uniformity in crime reporting, standardized offense definitions by which law enforcement agencies were to submit data, without regard for local statutes, were formulated.

National Incident-Based Reporting System (NIBRS) - Redesigned UCR Program*

Throughout the years, the UCR Program has remained virtually unchanged in terms of data collected and disseminated. Recognizing the need for improved statistics, law enforcement called for a thorough evaluative study that would modernize the UCR Program. The FBI fully concurred with the need for an updated program and lent its complete support, formulating an examination of the historical evolution of the Program (1982). The second phase involved an examination of potential futures for UCR and concluded with a set of recommended changes set forth in the draft "Blueprint

* Crime in the U.S., 1994, FBI, Washington, D.C.

for the Future of the Uniform Crime Reporting Program” (1985). At the eighth National UCR Conference held in 1985, the phase two recommendations were presented and the overall concept for the revised Program was unanimously approved. One of the first steps taken by the FBI to implement the redesigned UCR was the development of new offense definitions and data elements. A pilot project was conducted during 1987 in South Carolina. In 1988, the FBI presented a draft of reporting guidelines to law enforcement executives at a national conference. At the conference, there was an endorsement that a new, incident-based reporting system be established. The National Incident-Based Reporting System (NIBRS) will collect data on each single incident and arrest within 22 crime categories. For each offense known to police within these categories, incident, victim, property, offender, and arrestee information will be gathered when available. The goal of the redesign is to modernize crime information by collecting data maintained in law enforcement records; the enhanced UCR Program is, therefore, a byproduct of a records systems. The FBI was able to accept NIBRS data as of January, 1989, and ten states have now been accepted for submission of NIBRS data.

The Nebraska UCR Program

During the 1970's the FBI actively assisted individual states in the development of state UCR Programs which would be compatible with the national program. The Nebraska UCR Program became operational on January 1, 1971. Commencing on that date, law enforcement agencies in Nebraska began submitting UCR's to one central agency in Nebraska, the Commission, and the reports are in turn forwarded to the National Program after review and correction. The State Patrol, all sheriffs' departments, and police departments of municipalities of 1,500 population and over are required to submit UCR's by the seventh day after the end of the month. That is, crimes were reported by individual incident. This change in reporting has laid the groundwork for conversion to the new Nebraska Incident-Based Reporting System (NIBRS), which will be compatible with the National Incident-Based Reporting System. Law enforcement agencies may convert to NIBRS as they acquire the computer resources to submit NIBRS data. Ten agencies are currently submitting NIBRS data in Nebraska.

Crime Index

The extent, fluctuation and distribution of crime in the state is measured by the crime index. The crime index is composed of the following offenses: murder and nonnegligent manslaughter, forcible rape, robbery, aggravated assault, burglary, larceny-theft, motor vehicle theft, and arson. Many categories of crime are not of sufficient importance to be included in the index; some serious crimes, such as kidnapping, do not occur with enough regularity to be meaningful in the index. With these considerations in mind, the above offenses were selected as a group to serve as a measure of crime.

Clearances

For UCR purposes, an offense can be cleared by arrest or by exceptional means. An offense can be cleared by arrest when the offender is identified, there is enough evidence to charge him and he is actually taken into custody. The arrest of one person can clear several offenses and several persons may clear one offense. When some element beyond police control precludes formal charges against the offender, such as the victim's refusal to prosecute or death of the offender, an offense can be cleared by exceptional means.

Crime Rate

Crime rates relate the incidence of crime to population. Estimates of current population are used in computing crime rates. Crime rates are more refined indicators for comparative purposes than are volume figures. To compute a crime rate per 100,000 population, first divide the population of the area by 100,000 and then divide the crime index by the resulting figure. Generally throughout this report a rate per 1,000 population is used to be more meaningful for the state.

Crime Factors

Statistics gathered under the UCR Program are law enforcement statistics. The agencies report the offense and arrest data according to the standard offense classifications and not according to state statutes or local ordinances. Offenses are related to municipality and county in which they occur, rather than to the agency which may investigate, arrest or otherwise dispose of the case. The clearance is attributed to the municipality or county in which the offense occurred, even though the arresting agency may not be the department originally reporting the offense.

The factors which influence crime rates are dependent upon many characteristics of the community, and therefore, when attempting to interpret the crime statistics presented herein, one should be aware of the social structure and the factors that lead to or cause criminal behavior.

Awareness of the presence of certain crime factors, which may influence the resulting volume and type of statistics presented, is necessary if fair and equitable conclusions are to be drawn. These crime influencing factors are present, to some degree, in every community and their presence affects, in varying degrees, the crime experience of that community. Attempts at comparison of crime figures between communities should not be made without first considering the individual factors present in each community. Below are some of the conditions which will by type and volume affect the crime that occurs from place to place:

- Density and size of the community population and the metropolitan area of which it is a part.
- Composition of the population with reference particularly to age, sex, and race.
- Economic status of the population.
- Relative stability of populations, include commuters, seasonal and other transient types.
- Climate, including seasonal weather changes.
- Educational, recreational and religious characteristics.
- Standards governing appointments to the police force.
- Policies of the prosecuting officials and the courts.
- Attitude of the public toward law enforcement problems.
- The administrative and investigative efficiency of the local law enforcement agency, including the degree of adherence to crime reporting standards.

Caution should always be used when using the crime statistics presented herein, however, it should also be kept in mind that the data presented is the most accurate currently available. The law enforcement personnel who provide the data are to be commended for their efforts to provide accurate data. Without their sincere cooperation, this publication would not be possible. Crime is a social problem and therefore, should be a concern of the entire community.

DEFINITIONS OF OFFENSES

Uniformity of reporting depends upon the proper classification of offenses by the law enforcement agencies. It must be emphasized that the following definitions are not meant to be legal definitions as they are written in the Nebraska Penal Code. The purpose of these classifications is to establish a uniform national system for classifying similar offenses even though their legal definitions may vary considerably from state to state.

Part I Offenses

Criminal Homicide - Murder and Nonnegligent Manslaughter - the willful (nonnegligent) killing of one human being by another. Death by Negligence - the killing of another person through gross negligence.

Forcible Rape - the carnal knowledge of a female forcibly and against her will. Does not include statutory rape or sex attacks on males.

Robbery - the taking or attempting to take anything of value from the care, custody, or control of a person or persons by force or threat of force or violence and/or by putting the victim in fear.

Aggravated Assault - an unlawful attack by one person upon another for the purpose of inflicting severe or aggravated bodily injury. This type of assault usually is accompanied by the use of a weapon or by means likely to produce death or great bodily harm.

Burglary - the unlawful entry of a structure to commit a felony or a theft.

Larceny-Theft - the unlawful taking, carrying, leading, or riding away of property from the possession or constructive possession of another.

Motor Vehicle Theft - the theft or attempted theft of a motor vehicle.

Arson - any willful or malicious burning or attempt to burn, with or without intent to defraud, a dwelling house, public building, motor vehicle or aircraft, personal property of another, etc.

Part II Offenses

Simple Assault - any assault which does not involve the use of a firearm, knife, cutting instrument, or other dangerous weapon and in which there was no serious or aggravated injury to the victim.

Forgery and Counterfeiting - all offenses dealing with the making, altering, uttering, or possessing with intent to defraud anything false in the semblance of that which is true.

Fraud - fraudulent conversion and obtaining money or property by false pretense. Includes bad checks, confidence games, etc.

Embezzlement - the misappropriation or misapplication of money or property entrusted to one's care, custody or control.

Stolen Property - all offenses of buying, receiving, possessing, or concealing stolen property as well as all attempts to commit any of these offenses.

Vandalism / Destruction of Property - all willful or malicious destruction, injury, disfigurement or defacement of any public or private property, real or personal, without the consent of the owner or person having custody or control by cutting, tearing, breaking, marking, painting, drawing, covering with filth or any other such means as may be specified by law or ordinance.

Weapons - includes violations of weapons laws such as manufacture, sale or possession of deadly weapons; carrying deadly weapons; furnishing deadly weapons to minors; aliens possessing deadly weapons, and all attempts to commit any of the above offenses.

Prostitution and Commercialized Vice - includes the sex offenses of a commercialized nature such as prostitution; keeping bawdy house, disorderly house or house of ill repute; pandering, procuring, transporting or detaining women for immoral purposes, etc., and all attempts to commit any of the above.

Sex Offenses - includes all sex offenses other than forcible rape, prostitution and commercialized vice. This encompasses offenses against chastity, common decency, morals and the like such as adultery and fornication, buggery, incest, indecent exposure, sodomy, carnal abuse (no force) and all attempts to commit any of the above.

Drug Abuse Violations - statistics for these arrests are requested on the basis of the narcotics used. This includes all arrests for the violation of state and local ordinances, specifically those relating to the unlawful possession, sale, use, growing, manufacturing and making of narcotic drugs. Four divisions of narcotic drugs are recognized. These are:

- (a) Opium and cocaine and their derivatives (morphine, heroin, codeine),
- (b) Marijuana,
- (c) Synthetic narcotics which can cause true addiction (demerol, methadones) and
- (d) Other dangerous non-narcotic drugs (barbituates, benzedrine).

Gambling - includes all charges relating to promoting, permitting or engaging in gambling. This classification is broken into three divisions:

- (a) bookmaking (horse and sport book)
- (b) numbers and lottery and
- (c) all other gambling.

Offenses Against Family and Children - includes all charges of nonsupport, neglect or abuse of family and children such as desertion, abandonment or nonsupport, neglect or abuse of child, or nonpayment of alimony.

Driving Under the Influence - limited to driving or operating any vehicle while drunk or under the influence of liquor or narcotic drugs.

Liquor Laws - with the exception of drunkenness and driving under the influence, all state or local liquor law violations are placed in this class. Federal violations are not included. Include manufacturing, selling, transporting, furnishing as in maintaining unlawful drinking places, bootlegging, operating a still, furnishing liquor to a minor and using a vehicle for illegal transportation of liquor.

Disorderly Conduct - Disturbing the Peace - a breach of the peace (unlawful assembly, disturbing the peace, disturbing meetings, blasphemy, profanity, obscene language, refusing to assist an officer, etc.)

Vagrancy - includes vagrancy, begging, and loitering (age **18** and above).

All Other Offenses - includes all violations of state and local laws not otherwise classified.

Curfew and Loitering Law Violations - (Juveniles) all arrests made for violations of local curfew or loitering ordinances.

Runaways - (Juveniles) limited to juveniles taken into custody who have run away from the reporting jurisdiction.

INDEX OFFENSES

The index offenses include the violent crimes of murder and nonnegligent manslaughter, forcible rape, robbery, aggravated assault, and the property crimes of burglary, larceny-theft, motor vehicle theft, and arson. During 1995, 162 law enforcement agencies submitted Uniform Crime Reports on a monthly basis. These reports provided information on offenses that were reported or known to law enforcement, as well as information on persons arrested or cited for criminal violations and offenses cleared by arrest or by exceptional means.

Volume

A total of 74,541 index offenses were reported or known to law enforcement agencies in 1995. The violent crimes of murder, manslaughter, forcible rape, robbery, and felony assault accounted for 8.4 percent of the total index offenses. The property crimes of burglary, larceny-theft, motor vehicle theft, and arson accounted for 91.6 percent of the total offenses.

Larceny-theft was the most frequently reported crime, accounting for 69.4 percent of the total crimes reported.

Crime Rates

In 1995, the rate of crimes per 1,000 population was 45.5, based upon an estimated population of 1,637,000. The crime rate for violent crimes was 3.8 crimes per 1,000 population. There were 41.7 property crimes per 1,000 population.

Clearances and Arrests

A total of 20,049 index offenses were reported cleared during 1995, a clearance rate of 26.9 percent. Murder, manslaughter had the highest clearance rate, 89.6 percent. Violent crimes had a clearance rate of 68.3 percent and crimes against property had a clearance rate of 23.1 percent.

During 1995, a total of 15,149 persons were arrested for index offenses. Juvenile arrests accounted for 46 percent of the arrests for index offenses. The age group of 13-14 accounted for the largest percentage of persons arrested for index offenses.

Table 1
Index Offenses, 1995

index Offenses	Number of Index Offenses	Rate Per 1,000 Population¹	Percent Distribution	Percent Cleared
Crimes of Violence	6,238	3.8	8.4	68.3
Murder, Manslaughter	48	0.02	0.1	89.6
Forcible Rape	315	0.2	0.4	59.4
Rape by Force	277			
Attempt to Rape	38			
Robbery	1,066	0.7	1.4	42.7
Firearm	411			
Knife or Cutting Instrument	79			
Other Dangerous Weapon	63			
Strong Arm - No Weapon	513			
Aggravated Assault	4,809	2.9	6.5	74.4
Firearm	945			
Knife or Cutting Instrument	726			
Other Dangerous Weapon	1,644			
Hands, Fists, Feet, Etc.	1,494			
Crimes Against Property	68,303	41.7	91.6	23.1
Burglary	10,282	6.3	13.8	14.1
Forcible Entry	6,612			
Unlawful Entry - No Force	2,922			
Attempted Forcible Entry	748			
Larceny - Theft	51,750	31.6	69.4	24.4
Motor Vehicle Theft	5,736	3.5	7.7	28.2
Autos	4,621			
Trucks and Buses	813			
Other Vehicles	302			
Arson	535	0.3	0.7	16.1
Structural	282			
Mobile	129			
Other	124			
Total	74,541	45.5	100.0	26.9

¹ 1995 Estimate of Population - 1,637,000

Table 2
Crimes of Violence and Crimes Against Property, 1994 - 1995

Index Offense	Number of Offenses 1994	Number of Offenses 1995	Percent Change
Crimes of Violence	6,302	6,238	-1
Murder, Manslaughter	51	48	-6
Forcible Rape	498	315	-37
Robbery	1,221	1,066	-13
Aggravated Assault	4,532	4,809	+6
Crimes Against Property	65,750	68,303	+4
Burglary	10,876	10,282	-5
Larceny-Theft	48,157	51,750	+7
Motor Vehicle Theft	6,222	5,736	-8
Arson	495	535	+8
Total	72,052	74,541	+3

Table 3
Type and Value of Property Stolen, Recovered *

Type of Property	Value Stolen	Value Recovered	Percent Recovered
Currency, Notes, Etc.	\$ 1,527,131	\$ 145,657	9.5
Jewelry and Precious Metals	1,116,203	198,587	17.8
Clothing and Furs	674,540	122,603	18.2
Motor Vehicles	8,934,782	6,765,227	75.7
Office Equipment	483,176	151,904	31.4
Televisions, Radios, Cameras, Etc.	3,425,915	313,936	9.2
Firearms	410,895	90,672	22.1
Household Goods	439,870	48,516	11.0
Consumable Goods	370,504	156,551	42.3
Livestock	290,403	15,675	5.4
Miscellaneous	7,222,777	905,215	12.5
Total	\$ 24,896,196	\$ 8,914,543	35.8

* Does not include Douglas Co. S.O. and Omaha P.D.

Figure 1
Index Offenses by Month

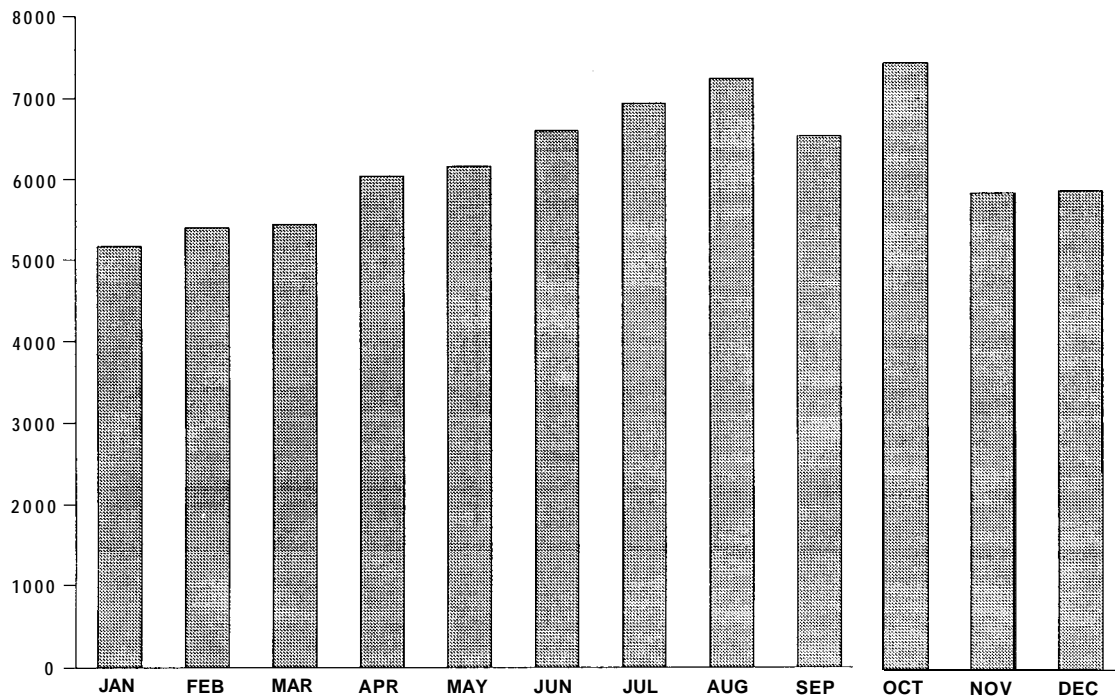
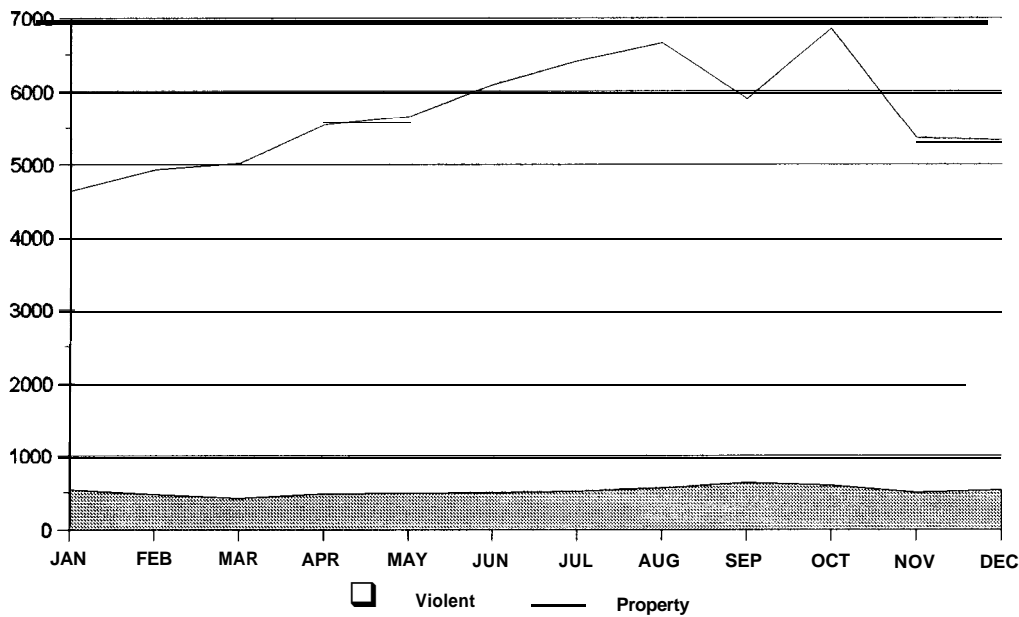


Figure 2
Violent and Property Crimes by Month



MURDER, MANSLAUGHTER

Murder and nonnegligent manslaughter are defined as the willful (nonnegligent) killing of one human being by another. Not included in this definition are deaths caused by negligence, suicide, or accidental deaths. Attempts to commit murder are classified as aggravated assault.

Volume and Rate

During 1995, a total of 48 murder, manslaughters were reported by law enforcement agencies in Nebraska. Murder, manslaughter accounted for 0.8 percent of all violent crimes and one-tenth of one percent of all index offenses. In 1995, there were .02 murders per 1,000 population. Thirty-seven murder, manslaughters were cleared in 1995, a clearance rate of 89.6 percent.

Murder, Manslaughter Analysis

In 1995, supplementary reports were received on 21 homicides. The Omaha Police Department did not provide supplementary reports. The supplementary report provides the age, sex, and race of the victim; type of weapon used to commit the offense; the relationship of the victim to the offender; and circumstances or motive leading to the crime.

In 1995, male victims accounted for 33 percent of the total murder victims and females accounted for 67 percent. An analysis of victims by race indicated that 90 percent were White.

Of the known perpetrators, males accounted for 94 percent. Female perpetrators accounted for 6 percent. White perpetrators accounted for 94 percent. Nothing was known about the offenders in two homicides.

Most murders, 81 percent, were committed either by a relative or an acquaintance of the victim. A further breakdown indicated that 38 percent were committed by a relative; 43 percent were committed by an acquaintance; 10 percent were committed by strangers and in 10 percent of the cases the relationship between the perpetrator(s) and victim was unknown.

Handguns were used in 29 percent of the murders.

Table 4
Murder Victims by Age, Sex, and Race

Age Group	Number	Percent Distribution	Sex		Race		
			Male	Female	White	Black	Indian
5 and Under	2	9.5	0	2	2	0	0
6-17	4	19.0	1	3	3	0	1
18-24	2	9.5	0	2	2	0	0
25-29	2	9.5	1	1	2	0	0
30-39	4	19.0	3	1	3	1	0
40-49	6	28.6	2	4	6	0	0
50-59	1	4.8	0	1	1	0	0
60-69	0	0.0	0	0	0	0	0
70-Above	0	0.0	0	0	0	0	0
Total	21	100.0	7	14	19	1	1

Table 5
Known Murder Perpetrators by Age, Sex, and Race

Age Group	Number	Percent Distribution	Sex		Race		
			Male	Female	White	Black	Indian
6-17	1	5.6	1	0	1	0	0
18-24	6	33.3	6	0	6	0	0
25-29	3	16.7	3	0	2	0	1
30-39	4	22.2	4	0	4	0	0
40-49	3	16.7	2	1	3	0	0
50-59	1	5.6	1	0	1	0	0
60-Above	0	0.0	0	0	0	0	0
Total	18	100.0	17	1	17	0	1

Table 6
Murder, Manslaughter Circumstances

Circumstance	Number	Percent Distribution
Family (Spouse/Spouse, Parent/Child)	8	38.1
Money/Property Argument	0	0.0
Boyfriend/Girlfriend	3	14.3
Other Quarrel	3	14.3
Killed by Felon	2	9.5
Other	2	9.5
Motive Unknown/Not Stated	3	14.3
Total	21	100.0

Table 7
Murder, Manslaughter - Type of Weapon

Type of Weapon	Number	Percent Distribution
Firearm - Type not Stated	0	0.0
Handgun	6	28.6
Shotgun	3	14.3
Rifle	3	14.3
Knife or Cutting Instrument	3	14.3
Blunt Object	2	9.5
Personal Weapon	2	9.5
Other	2	9.5
Total	21	100.0

Figure 3
Murder, Manslaughter by Month

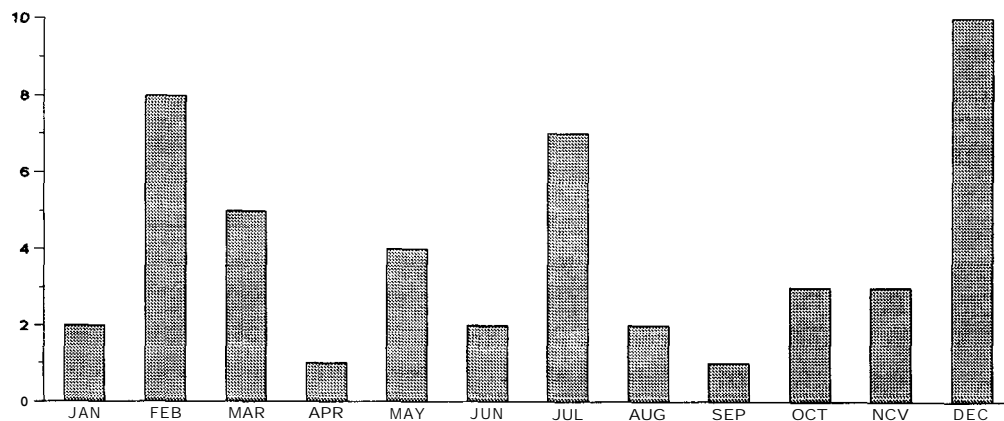
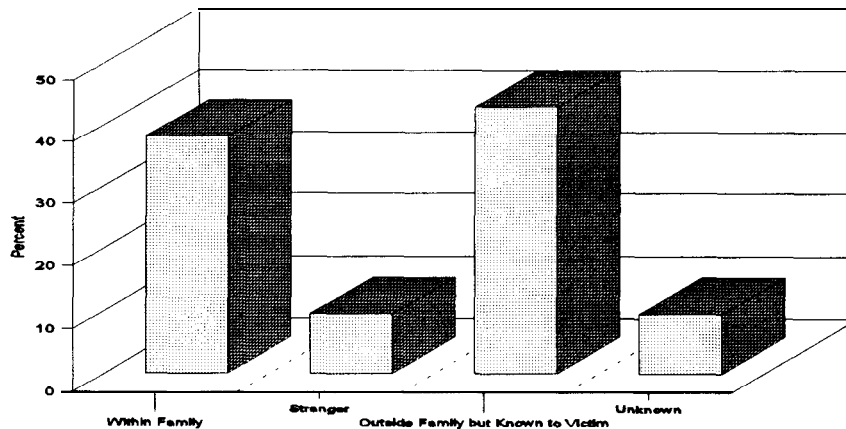


Figure 4
Relationship of Victim to Offender



FORCIBLE RAPE

Forcible rape is defined as the carnal knowledge of a female forcibly and against her will. All rapes and attempts to rape are counted. Carnal abuse, without force (statutory rape) and other sex offenses are not included.

Volume and Rate

During 1995, law enforcement agencies in Nebraska reported a total of 315 forcible rapes. Forcible rape accounted for 5.0 percent of all violent crimes and 0.4 percent of all index crimes. In 1995, there were 0.2 rapes per 1,000 population. A total of 187 forcible rapes, 59.4 percent, were cleared during 1995.

Analysis of Rape

Rape by force accounted for 87.9 percent of all forcible rapes and 12.1 percent were attempts to rape.

The age group of 35-39 accounted for the highest percentage of persons arrested for forcible rape, 15.3 percent. Juvenile arrests accounted for 20.0 percent of all persons arrested for forcible rape.

Rape Circumstances

Law enforcement agencies are asked to submit a supplementary report on the circumstances surrounding any rape by force and attempt to rape. Supplementary reports were received on 219 cases. The Omaha Police Department did not provide supplementary reports in 1995. Victims under the age of 25 accounted for 75 percent of the total victims. Of those victims under age 25, 36 percent were in the age group of 18 thru 24 and 27 percent were in the age group of 11 thru 15.

Law enforcement agencies reported a total value of \$1,478 stolen in rape offenses.

Table 8
Rape - Relationship of Victim to Offender

Relationship	Number	Percent Distribution
Relative	31	14.2
Acquaintance/Known to Victim	113	51.6
Stranger	29	13.2
Not Stated	46	21.0
Total	219	100.0

Table 9
Rape - Age Groups of Victims

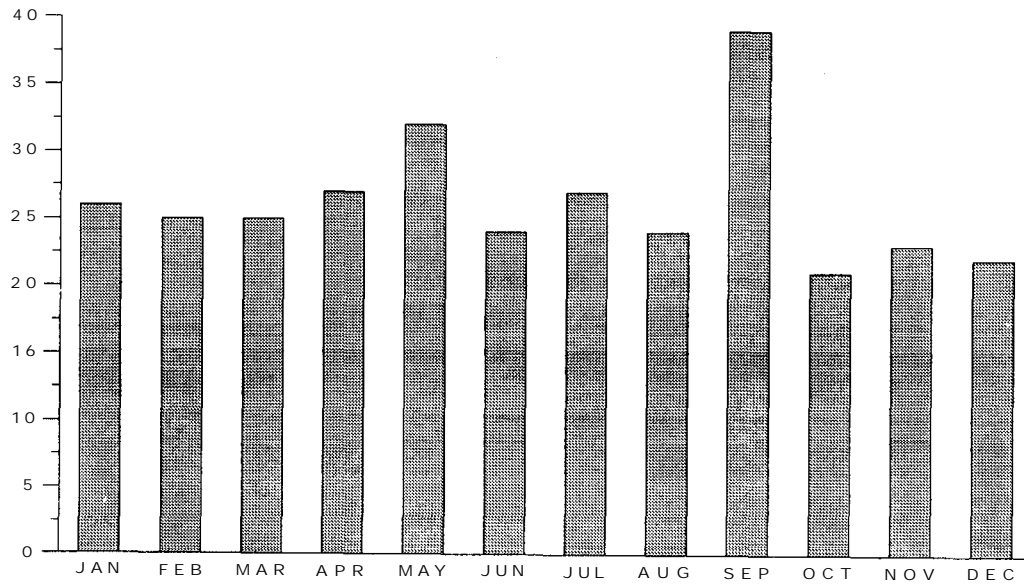
Age Group	Number	Percent Distribution
10 and Under	31	14.2
11-15	45	20.5
16-17	31	14.2
18-24	59	26.9
25-29	12	5.5
30-39	31	14.2
40-49	7	3.2
50-Above	3	1.4
Total	219	100.0

Table 10
Forcible Rape
Type of Property Stolen, Recovered *

Type of Property	Value Stolen	Value Recovered
Currency, Notes, Etc.	\$ 730	\$ 0
Jewelry and Precious Metals	0	0
Clothing and Furs	0	0
Motor Vehicles	0	0
Office Equipment	0	0
Televisions/Radios/Cameras	748	0
Firearms	0	0
Household Goods	0	0
Consumable Goods	0	0
Livestock	0	0
Miscellaneous	0	0
Total	\$ 1,478	\$ 0

* Does not include Douglas Co. S.O. and Omaha P.D.

Figure 5
Forcible Rape By Month



ROBBERY

Robbery is the taking or attempting to take anything of value from the care, custody, or control of a person or persons by force or threat of force or violence and/or by putting the victim in fear. Robbery takes place in the presence of the victim. The victim, who usually is the owner or person having custody of the property is directly confronted by the perpetrator and is threatened with force or fear that force will be used.

Volume and Rate

During 1995, a total of 1,066 robberies were reported by law enforcement agencies in Nebraska. Robbery accounted for 17.1 percent of all violent crimes and 1.4 percent of all index crimes. In 1995, there were 0.7 robberies per 1,000 population. A total of 455 robberies, 42.7 percent, were cleared in 1995.

Analysis of Robbery

A firearm was used in 39 percent of all robberies, a knife or cutting instrument was used in 7 percent, other dangerous weapons were used in 6 percent and strong-arm tactics were used in 48 percent of all robberies.

Robberies occurring on streets, highways, alleys, etc., accounted for 54 percent all robberies. Residential robberies accounted for 17 percent.

The age group of 16 accounted for the greatest percentage of persons arrested for robbery, 14 percent. Juveniles accounted for 45 percent of all arrests for robbery.

Of persons arrested for robbery, 44 percent were White, 50 percent were Black and 5 percent were American Indian/Alaskan Native.

Law enforcement agencies reported a total value of \$12 1,479 stolen in robbery offenses.

Table 11
Robbery - Place of Occurrence

Classification	Number of Offenses*	Percent Distribution	Total Value	Average Value
Highway (Streets/Alleys)	571 (109)	53.6	\$41,225	s 378.21
Commercial House	148(23)	13.9	12,237	532.04
Gas or Service Station	24 (6)	2.2	1,167	194.50
Convenience Store	54(21)	5.1	7,932	377.71
Residence	176 (41)	16.5	8,536	208.20
Bank	18 (5)	1.7	41,800	8,360.00
Miscellaneous	75 (53)	7.0	8,582	161.92
Total	1,066 (258)	100.0	\$121,479	\$ 470.85

- The numbers in parentheses were used to compute the average values as the Omaha P.D. does not provide values of property stolen.

Table 12
Robbery
Type of Property Stolen, Recovered *

Type of Property	Value Stolen	Value Recovered
Currency, Notes, Etc.	s 74,800	s 3,127
Jewelry and Precious Metals	2,095	67
Clothing and Furs	3,256	a52
Motor Vehicles	33,025	32,875
Office Equipment	0	0
Televisions/Radios/Cameras	3,585	2,835
Firearms	300	0
Household Goods	20	0
Consumable Goods	384	73
Livestock	0	0
Miscellaneous	4,014	699
Total	\$ 121,479	\$ 40,528

- Does not include Douglas Co. S.O. and Omaha P.D.

Figure 6
Robbery by Month

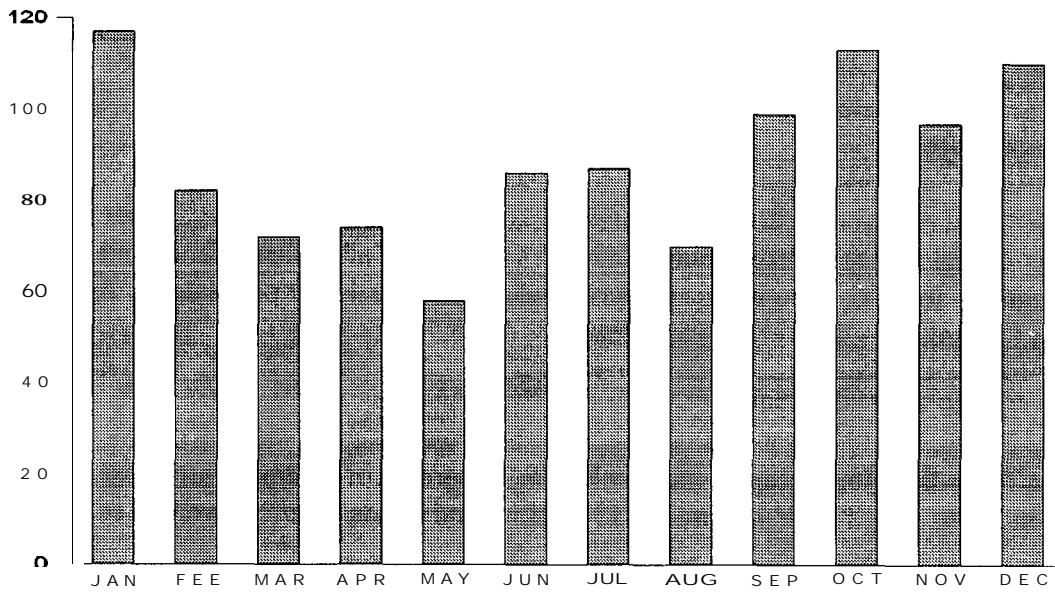
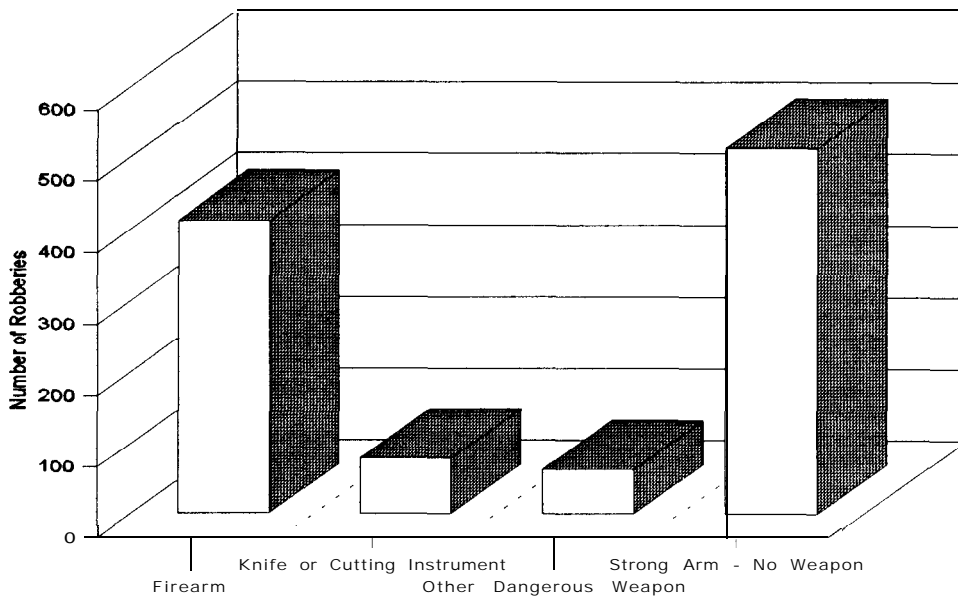


Figure 7
Analysis of Robbery by Type of Weapon



AGGRAVATED ASSAULT

Aggravated assault is an unlawful attack by one person upon another for the purpose of inflicting severe or aggravated bodily injury. Aggravated assault usually involves the use of a weapon or other means likely to produce death or great bodily injury.

Volume and Rate

During 1995, there were 4,809 aggravated assaults reported by law enforcement agencies in Nebraska. Aggravated assaults accounted for 77.1 percent of all violent crimes and 2.9 percent of all index crimes. In 1995, there were 2.9 aggravated assaults per 1,000 population. A total of 3,577 aggravated assaults, 74.4 percent, were cleared in 1995.

Analysis of Aggravated Assault

The use of other dangerous weapon was involved in 34 percent of all aggravated assaults. A firearm was used in 20 percent, a knife was used in 15 percent, and hands/fists/feet were used in 31 percent.

The age group of 25-29 accounted for the highest percentage of persons arrested for aggravated assault, 17 percent. Juveniles accounted for **16** percent of all arrests for aggravated assault.

An analysis of aggravated assault arrests revealed that 69 percent were White, 25 percent were Black, 5 percent were American Indian/Alaskan Native, and one percent were Asian/Pacific Islander.

Figure 8
Aggravated Assault by Month

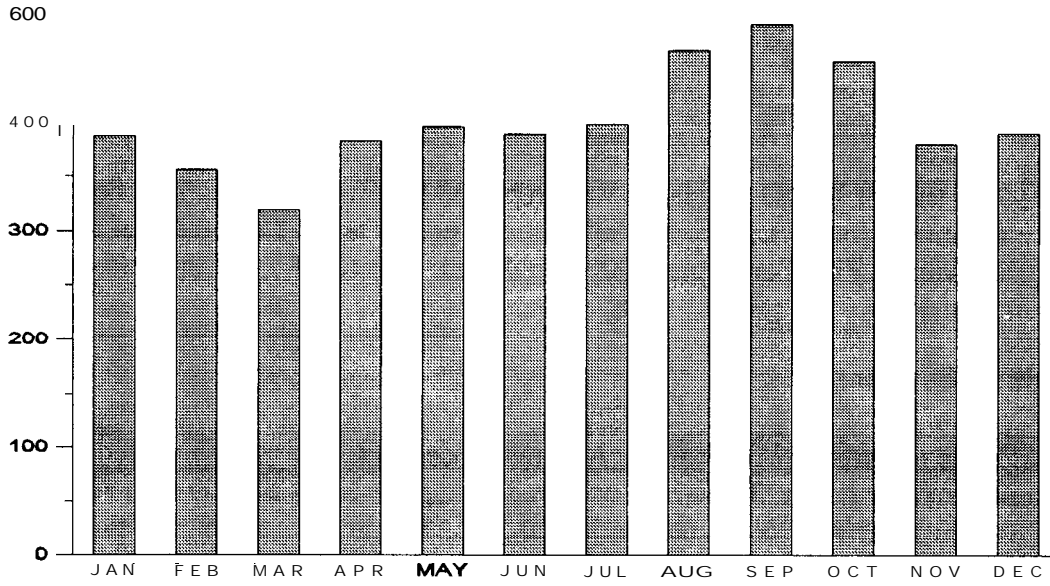
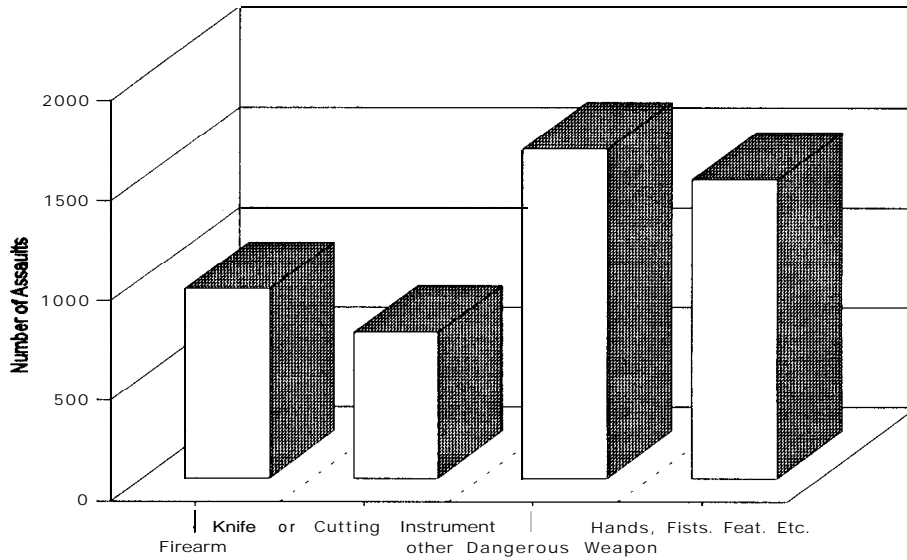


Figure 9
Aggravated Assault by Type of Weapon



BURGLARY

Burglary is defined as any unlawful entry or attempted forcible entry of any structure to commit a felony or theft. Burglary is divided into three categories: forcible entry, unlawful entry - no force, and attempted forcible entry.

Volume and Rate

During 1995, a total of 10,282 burglaries were reported by law enforcement agencies in Nebraska. Burglary accounted for 15.1 percent of all property crimes and 13.8 percent of all index crimes. In 1995, there were 6.3 burglaries per 1,000 population. A total of 1,454 burglaries, 14.1 percent, were cleared in 1995.

Analysis of Burglary

Of all burglaries reported, 67 percent involved residences and 33 percent involved non-residences. Of the residential burglaries, 30 percent occurred during the hours of 6:00 a.m. and 6:00 p.m., 31 percent occurred between 6:00 p.m. and 6:00 a.m., and in 39 percent the time of entry was unknown. Non-residential burglaries occurred most frequently during the night, accounting for 56 percent. Burglaries during the day accounted for 9 percent and in 35 percent the time of entry was unknown.

The age group of 13- 14 accounted for the highest percentage of persons arrested for burglary, 11 percent. Juveniles accounted for 44 percent of all persons arrested for burglary.

Of persons arrested for burglary, 82 percent were White, 12 percent were Black, 6 percent were American Indian/Alaskan Native and less than one percent were Asian/Pacific Islander.

Law enforcement agencies reported property worth \$4,886,885 stolen in burglary offenses.

Table 13
Burglary - Place and Time of Occurrence

Classification	Number of Offenses .	Percent Distribution	Total Value	Average Value
Residence	6,876 (3,911)	66.9	\$ 2,699,938	\$ 690.34
Night (6:00 p.m. to 6:00 a.m.)	2,056 (1,269)	29.9	816,032	643.05
Day (6:00 a.m. to 6:00 p.m.)	2,151 (1,071)	31.3	662,313	618.41
Unknown	2,669 (1,571)	38.8	1,221,593	777.59
Non-Residence	3,406 (2,488)	33.1	2,186,947	879.00
Night (6:00 p.m. to 6:00 a.m.)	1,889 (1,443)	55.5	1,369,177	948.84
Day (6:00 a.m. to 6:00 p.m.)	315 (240)	9.2	181,142	754.76
Unknown	1,202 (805)	35.3	636,628	790.84
Total	10,282 (6,399)	100.0	\$4,886,885	\$ 763.70

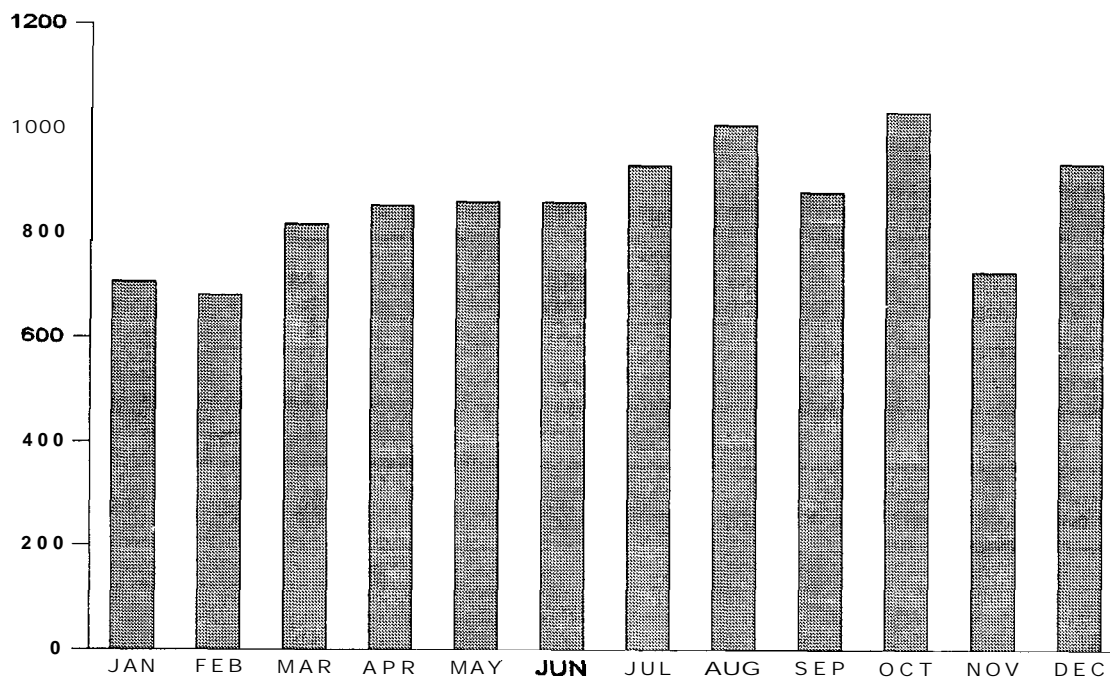
- The numbers in parentheses were used to compute the average values as the Omaha P.D. does not provide values of property stolen.

Table 14
Burglary
Type of Property Stolen, Recovered *

Type of Property	Value Stolen	Value Recovered
Currency, Notes, Etc.	\$ 520,247	\$ 39,749
Jewelry and Precious Metals	422,034	87,405
Clothing and Furs	113,717	7,995
Motor Vehicles	388,696	272,838
Office Equipment	200,044	40,931
Televisions/Radios/Cameras	866,672	103,629
Firearms	220,497	52,501
Household Goods	165,622	12,230
Consumable Goods	206,158	128,245
Livestock	1,207	2,600
Miscellaneous	1,781,991	188,217
Total	\$ 4,886,885	\$ 936,340

* Does not include Douglas Co. S.O. and Omaha P.D.

Figure 10
Burglary By Month



LARCENY - THEFT

Larceny-theft is the unlawful taking of the property of another with the intent of depriving that person of ownership. Larceny-theft as an index offense includes larcenies under \$50 in value.

Volume and Rate

During 1995, a total of 51,750 larceny-thefts were reported by law enforcement agencies in Nebraska. Larceny-theft accounted for 75.8 percent of the crimes against property and 69.4 percent of all index crimes. In 1995, there were 31.6 larceny-thefts per 1,000 population. A total of 12,632 larceny-thefts, 24.4 percent, were cleared.

Analysis of Larceny-Theft

Of the total larceny-thefts reported, thefts from motor vehicles accounted for 24.1 percent, shoplifting accounted for 17.7 percent, and thefts from buildings accounted for 16.4 percent.

The age group of 13-14 accounted for 16 percent of the total number of persons arrested for larceny-theft. Juveniles accounted for 49 percent of the total number arrested.

Of the persons arrested for larceny-theft, 78 percent were White, 18 percent were Black, 3 percent were American Indian/Alaskan Native, and one percent were Asian/Pacific Islander.

Law enforcement agencies reported a total value of \$11,190,893 stolen in larceny-theft offenses.

Table 15
Larceny-Theft

Classification	Number of Offenses *	Percent Distribution	Total Value	Average Value
Pocket-Picking	70 (21)	0.1	\$ 1,708	\$ 81.33
Purse-Snatching	121 (37)	0.2	3,126	84.49
Shoplifting	9,152 (5,580)	17.7	268,928	48.19
From Motor Vehicles	12,486 (7,782)	24.1	2,633,438	338.40
Motor Vehicle Parts/Access.	6,199 (4,676)	12.0	1,472,315	314.87
Bicycles	3,557 (3,046)	6.9	632,745	207.73
From Buildings	8,474 (5,551)	16.4	2,688,111	484.26
From Coin-Operated Machines	376 (336)	0.7	40,409	120.26
From Farmyard or Open Field	948 (948)	1.8	886,976	935.63
Other	10,367 (7,702)	20.0	2,561,363	332.56
Total	51,750 (35,679)	100.0	\$11,189,119	\$ 313.61

- Numbers in parentheses were used to compute the average values as the Omaha P.D. does not provide values of property stolen.

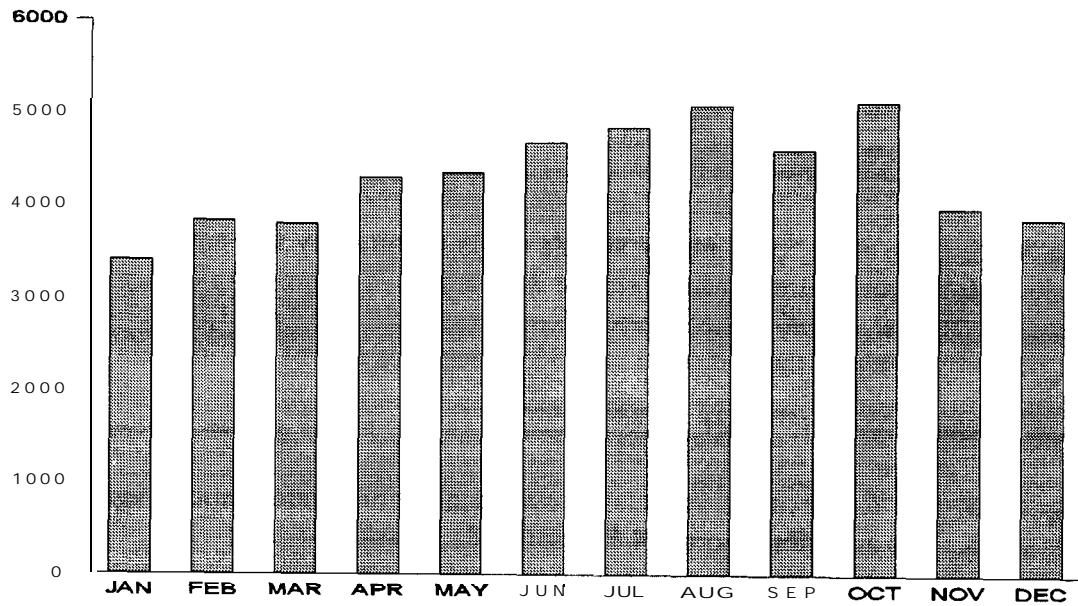
Table 16
Larceny - Theft
Type of Property Stolen, Recovered *

Type of Property	Value Stolen	Value Recovered
Currency, Notes, Etc.	\$ 927,350	\$ 100,767
Jewelry and Precious Metals	690,979	111,115
Clothing and Furs	523,146	83,740
Motor Vehicles	0	0
Office Equipment	282,392	109,673
Televisions/Radios/Cameras	2,528,576	200,892
Firearms	172,033	30,716
Household Goods	266,283	34,846
Consumable Goods	154,847	28,123
Livestock	289,196	13,075
Miscellaneous	5,356,091	706,054
Total	\$ 11,190,893	\$ 1,419,001

- Does not include Douglas Co. S.O. and Omaha P.D.



Figure 11
Larceny-Theft by Month



MOTOR VEHICLE THEFT

Motor vehicle theft is defined as the theft or attempted theft of a motor vehicle, including joyriding. A motor vehicle is defined as a self-propelled vehicle that runs on land surface and not on rails. Examples of motor vehicles are automobiles, trucks, buses, motorcycles, motor scooters, snowmobiles, etc. Thefts of farm equipment, bulldozers, airplanes, and construction equipment are not included in the definition of a motor vehicle.

Volume and Rate

During 1995, there were 5,736 motor vehicle thefts reported by law enforcement agencies in Nebraska. Motor vehicle thefts accounted for 8.4 percent of all property crimes and 7.7 percent of all index offenses. In 1995, there were 3.5 motor vehicle thefts per 1,000 population. There were 1,615 motor vehicle thefts cleared in 1995, a clearance rate of 28.2 percent.

Analysis of Motor Vehicle Theft

During 1995, law enforcement agencies provided additional information regarding types of vehicles stolen. The agencies reported 4,621 autos, 813 trucks and buses, and 302 other vehicles stolen.

The age group of 13-14 accounted for the highest percentage of persons arrested for motor vehicle theft, accounting for 16 percent of the total. Juveniles accounted for 53 percent of all arrests for motor vehicle theft.

Of the persons arrested for motor vehicle theft, 79 percent were White, 13 percent were Black, 7 percent were American Indian/Alaskan Native, and one percent were Asian/Pacific Islander.

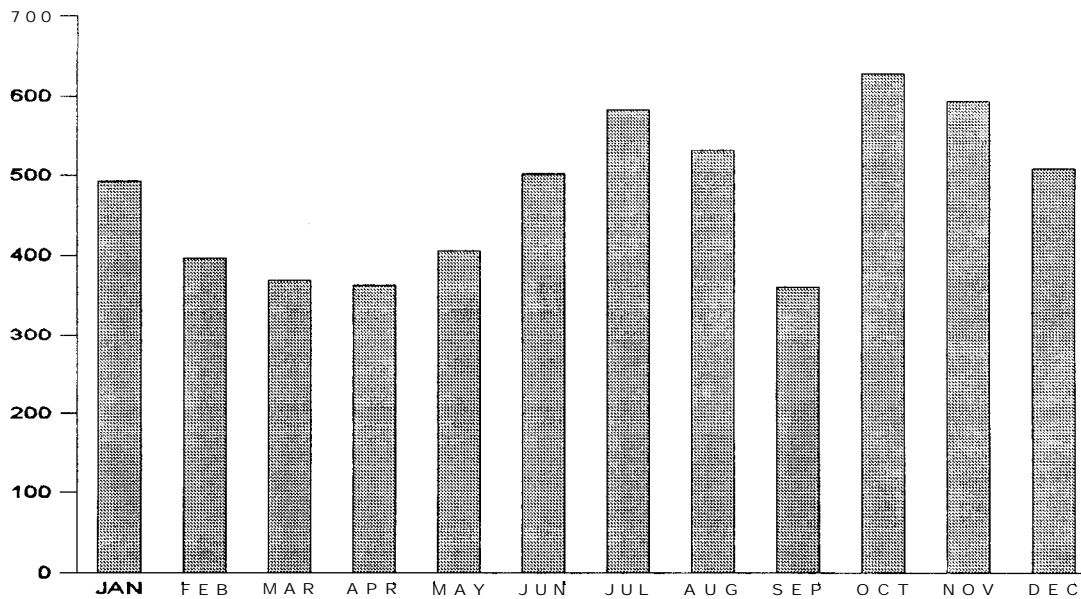
Law enforcement agencies reported property worth \$8,695,461 stolen in motor vehicle thefts.

Table 17
Motor Vehicle Theft
Type of Property Stolen, Recovered *

Type of Property	Value Stolen	Value Recovered
Currency, Notes, Etc.	\$ 4,004	\$ 2,014
Jewelry and Precious Metals	1,095	0
Clothing and Furs	34,421	30,016
Motor Vehicles	8,491,051	6,441,374
Office Equipment	740	1,300
Televisions/Radios/Cameras	26,334	6,580
Firearms	18,065	7,455
Household Goods	7,945	1,440
Consumable Goods	9,115	110
Livestock	0	0
Miscellaneous	102,691	28,385
Total	\$ 8,695,461	\$ 6,518,674

• Does not include Douglas Co. S.O. and Omaha P.D.

Figure 12
Motor Vehicle Theft by Month



ARSON

Arson is any willful or malicious burning or attempt to burn, with or without intent to defraud, a dwelling house, public building, motor vehicle or aircraft, personal property of another, etc. The State Fire Marshal's office is the primary source of arson data.

Volume and Rate

During 1995, there were 535 offenses of arson reported. Arson accounted for 0.8 percent of the property crimes and 0.7 percent of all index offenses. There were 86 arsons cleared in 1995, a 16.1 percent clearance rate.

Analysis of Arson

The total estimated value of property damage due to arson amounted to \$6,244,687 in 1995. Property damage to 283 structures was \$5,683,833. The 129 mobile arsons (motor vehicles and mobile property - trailers, recreational vehicles, airplanes) resulted in \$5 15,826 worth of property damage. In 123 other types of arson, the property damage was \$45,028. The average value of property damage per arson incident was \$11,672.3 1.

The age group of 13-14 accounted for the greatest percentage of persons arrested for arson, accounting for 27 percent of the total arrested. Juveniles accounted for 72 percent of all arrests for arson.

Of the persons arrested for arson, 87 percent were White, 10 percent were Black, two percent were American Indian/Alaskan Native and one percent were Asian/Pacific Islander.

Figure 13
Arson by Month

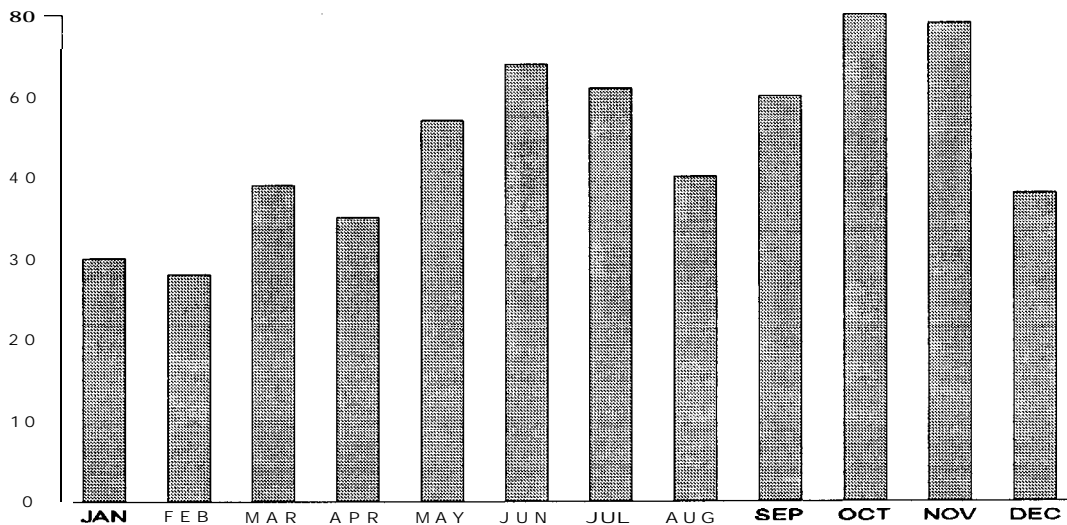


Table 18
Arson - Type of Property and Property Loss

	Property Classification	Number of Offenses	Percent Distribution	Value of Property Damage	Average Loss
S T R U C T U R A L	Single Occupancy Residential: House/Townhouse/Duplex/Etc.	137	25.6	\$ 1,927,470	\$14,069.12
	Other Residential: Apartment/Hotel/Motel/Dorm	38	7.1	944,440	24,853.68
	Storage: Barns/Garages/Warehouses/Etc.	39	7.3	224,700	5761.54
	Industrial/Manufacturing	4	0.7	300,950	75,237.50
	Other Commercial: Stores/Restaurants/Offices/Etc.	16	3.0	1,755,125	109,695.31
	Community/Public: Churches/Jails/Schools/Colleges/ Hospitals/Etc.	32	6.0	474,028	14,813.38
	All Other Structures: Out Buildings/Monuments/ Buildings Under Construction	17	3.2	57,120	3,360.00
	M O B I L E	Motor Vehicles: Autos/Trucks/Buses/Motorcycles	124	23.2	506,726
Other Mobile Property: Trailers/Recreational Vehicles/ Airplanes/Boats/Etc.	5	0.9	9,100	1,820.00	
	Other: Crops/Timber/Fences/Signs/Etc.	123	23.0	45,028	366.08
	Total	535	100.0	\$6,244,687	\$11,672.31

ARREST DATA

Under the Uniform Crime Reporting Program, an arrest is counted each time a person is taken into custody, summoned, notified, or cited. When a person under the age of 18 commits an offense and the circumstances are such that if the offender were an adult an arrest would be made, the juvenile is counted as an arrest by the reporting agency.

For reporting purposes, one arrest is counted each time a person is taken into custody, regardless of the number of charges placed against him. If an individual is arrested more than once during the year, an arrest is counted each time. When several persons are arrested in connection with the same offense, each is counted as an arrest.

Volume and Rate

Law enforcement agencies in Nebraska reported 90,917 arrests in 1995. There were 55.5 arrests per 1,000 population in 1995 as compared to 51.1 arrests per 1,000 population in 1994.

Arrests for Part I Offenses accounted for 17 percent of the total arrests. Of the arrests for Part I Offenses, larceny-theft accounted for the greatest portion, 75 percent. The greatest percentage of arrests for Part II Offenses (excluding All Other Offenses) was Driving Under the Influence, 17 percent.

During 1995, arrests for crimes of violence (murder, manslaughter, forcible rape, robbery, and felony assault) accounted for 12 percent of all arrests for Part I Offenses and 2.0 percent of the total arrests. Arrests for crimes against property (burglary, larceny-theft, motor vehicle theft, and arson) accounted for 88 percent of all arrests for Part I Offenses and 15 percent of the total arrests.

Arrests for Part I Offenses increased 10 percent over 1994. Arrests for Part II Offenses increased 10 percent over 1994.

Arrests by Age

The number of persons under the age of 18 (juveniles) arrested during 1995 increased 13 percent from 1994. The arrests of persons age 18 and over (adults) increased 9 percent.

The arrest of persons under the age of 25 accounted for the following percentages of the total arrests for each index offense: murder, manslaughter - 67 percent; forcible rape - 43 percent; robbery - 72 percent; felony assault - 48 percent; burglary - 78 percent; larceny-theft - 71 percent; motor vehicle theft - 81 percent; and arson - 82 percent. Of those persons under the age of 25 arrested for index offenses, persons under the age of 18 accounted for 65 percent.

Larceny-theft was the offense resulting in the most arrests of persons under age 18, while adults were most often arrested for Driving Under the Influence and All Other Offenses.

Arrests by Sex

In 1995, males accounted for 78 percent of all arrests. Males accounted for 74 percent of arrests for Part I Offenses and 78 percent of arrests for Part II Offenses. Total male arrests increased 9 percent from 1994 and female arrests increased 12 percent.

Larceny-theft was the crime for which females were most often arrested. Males were most often arrested for Driving Under the Influence.

Arrests by Race

An analysis of total arrests by race for 1995 indicated 80 percent were White, **17** percent were Black, 3 percent were American Indian/Alaskan Native, and less than one percent were Asian/Pacific Islander.

Race distribution figures for the Part I Offenses revealed that 77 percent were White, 19 percent were Black, 4 percent were Indian/Alaskan Native and less than one percent were Asian/Pacific Islander. Race figures for Part II Offenses revealed that 80 percent were White, **16** percent were Black, 3 percent were Indian/Alaskan Native and less than one percent were Asian/Pacific Islander.

An analysis of arrests by race for crimes of violence (murder, manslaughter, forcible rape, robbery and felony assault) revealed that 64 percent were White, 31 percent were Black, 4 percent were American Indian/Alaskan Native, and less than one percent were Asian/Pacific Islander.

Race figures for crimes against property (burglary, larceny-theft, motor vehicle theft and arson) revealed that 79 percent were White, 17 percent were Black, 4 percent were Indian/Alaskan Native and less than one percent were Asian/Pacific Islander.

Table 19
Total Arrests - 1995

Offense Classification	Number	Percent Distribution	Rate Per 100,000 Population¹
Murder, Manslaughter	57	.06	3.5
Death by Negligence	24	.03	1.5
Forcible Rape	196	.22	12.0
Robbery	317	.35	19.4
Aggravated Assault	1,176	1.29	71.8
Burglary	1,203	1.32	73.5
Larceny-Theft	11,413	12.55	697.2
Motor Vehicle Theft	615	.68	37.6
Arson	172	.19	10.5
Total Part I Offenses	15,173	16.69	926.9
Simple Assault	9,549	10.50	583.3
Forgery and Counterfeiting	879	.97	53.7
Fraud - O.M.F.P.	2,706	2.98	165.3
Embezzlement	89	.10	5.4
Possession of Stolen Property	1,513	1.66	92.4
Vandalism - Destruction of Property	3,457	3.80	211.2
Weapons-Carrying/Possessing/Etc.	1,526	1.68	93.2
Prostitution and Commercialized Vice	396	.44	24.2
Sex Offenses	720	.79	44.0
Drug Abuse Violations	6,954	7.65	424.8
Gambling	82	.09	5.0
Offenses Against Family and Children	1,607	1.77	98.2
Driving Under the Influence	12,841	14.12	784.4
Liquor Law Violations	8,519	9.37	520.4
Disorderly Conduct/Disturbing the Peace	4,737	5.21	289.4
Vagrancy	0	0.00	0.0
All Other Offenses (Except Traffic)	18,653	20.52	1,139.5
Curfew and Loitering Law Violations	806	.89	49.2
Runaways	710	.78	43.4
Total Part II Offenses	75,744	83.31	4,627.0
Total	90,917	100.00	5,553.9

¹ 1995 Estimate of Population - 1,637,000

Table 20
Comparison of Arrests, 1994 - 1995

Offense Classification	1994	1995	Percent Change
Murder, Manslaughter	45	57	+27
Death by Negligence	16	24	+50
Forcible Rape	224	196	-13
Robbery	326	317	- 3
Aggravated Assault	915	1,176	+29
Burglary	1,252	1,203	- 4
Larceny-Theft	10,372	11,413	+ 10
Motor Vehicle Theft	514	615	+20
Arson	134	172	+28
Total Part I Offenses	13,798	15,173	+ 10
Simple Assault	8,507	9,549	+12
Forgery and Counterfeiting	723	879	+22
Fraud - O.M.F.P.	2,262	2,706	+20
Embezzlement	127	89	-30
Possession of Stolen Property	1,437	1,513	+5
Vandalism - Destruction of Property	3,013	3,457	+15
Weapons-Carrying/Possessing/Etc.	1,355	1,526	+13
Prostitution and Commercialized Vice	266	396	+49
Sex Offenses	825	720	-13
Drug Abuse Violations	5,452	6,954	+28
Gambling	63	82	+30
Offenses Against Family and Children	1,478	1,607	+9
Driving Under the Influence	12,925	12,841	- 1
Liquor Law Violations	8,246	8,519	+3
Disorderly Conduct/Disturbing the Peace	4,403	4,737	+8
Vagrancy	5	0	-100
All Other Offenses (Except Traffic)	16,978	18,653	+10
Curfew and Loitering Law Violations	608	806	+33
Runaways	461	710	+54
Total Part II Offenses	69,134	75,744	+10
Total	82,932	90,917	+10

Table 21
Juvenile and Adult Arrests, 1994 - 1995

Offense Classification	Juvenile			Adult		
	1994	1995	Percent Change	1994	1995	Percent Change
Murder, Manslaughter	10	11	+10	35	46	+31
Death by Negligence	2	0	-100	14	24	+71
Forcible Rape	43	40	-7	181	156	-14
Robbery	128	141	+10	198	176	-11
Aggravated Assault	166	183	+10	749	993	+33
Burglary	544	532	-2	708	671	-5
Larceny-Theft	4,844	5,576	+15	5,528	5,837	+6
Motor Vehicle Theft	277	327	+18	237	288	+22
Arson	94	124	+76	40	48	+20
Total Part I Offenses	6,108	6,934	+14	7,690	8,239	+7
Simple Assault	1,571	1,932	+23	6,936	7,617	+10
Forgery and Counterfeiting	107	119	+11	616	760	+23
Fraud - O.M.F.P.	126	106	-16	2,136	2,600	+22
Embezzlement	23	11	-52	104	78	-25
Possession of Stolen Property	665	599	-10	772	914	+18
Vandalism - Destruction of Prop.	1,436	1,608	+12	1,577	1,849	+17
Weapons-Carrying/Poss./Etc.	312	318	+2	1,043	1,208	+16
Prostitution and Commercial. Vice	7	5	-29	259	391	+51
Sex Offenses	120	77	-36	705	643	-9
Drug Abuse Violations	568	859	+51	4,884	6,095	+25
Gambling	6	5	-17	57	77	+35
Offenses Against Family/Children	24	46	+92	1,454	1,561	+7
Driving Under the Influence	301	286	-5	12,624	12,555	-1
Liquor Law Violations	2,234	2,290	+3	6,012	6,229	+4
Disorderly Conduct/Disturb. Peace	760	743	-2	3,643	3,994	+10
Vagrancy	0	0	--	5	0	-100
All Other Offenses (Excpt. Traffic)	2,329	2,674	+15	14,649	15,979	+9
Curfew and Loitering	608	806	+33	NA	NA	
Runaways	461	710	+54	NA	NA	
Total Part II Offenses	11,658	13,194	+13	57,476	62,550	+9
Total	17,766	20,128	+13	65,166	70,789	+9

Table 22
Comparison of Adult and Juvenile Arrests

Offense Classification	Total Arrests	Adult	Juvenile	Percent Distribution	
				Adult	Juvenile
Murder, Manslaughter	57	46	11	80.7	19.3
Death by Negligence	24	24	0	100.0	0.0
Forcible Rape	196	156	40	79.6	20.0
Robbery	317	176	141	55.5	44.5
Aggravated Assault	1,176	993	183	84.4	15.6
Burglary	1,203	671	532	55.8	44.2
Larceny-Theft	11,413	5,837	5,576	51.1	48.9
Motor Vehicle Theft	615	288	327	46.8	53.2
Arson	172	48	124	27.9	72.1
Total Part I Offenses	15,173	8,239	6,934	54.3	45.7
Simple Assault	9,549	7,617	1,932	79.8	20.2
Forgery and Counterfeiting	879	760	119	86.5	13.5
Fraud - O.M.F.P.	2,706	2,600	106	96.1	3.9
Embezzlement	89	78	11	87.6	12.4
Possession of Stolen Property	1,513	914	599	60.4	39.6
Vandalism - Destruction of Property	3,457	1,849	1,608	53.5	46.5
Weapons-Carrying/Possessing/Etc.	1,526	1,208	318	79.2	20.8
Prostitution and Commercialized Vice	396	391	5	98.7	1.3
Sex Offenses	720	643	77	89.3	10.7
Drug Abuse Violations	6,954	3,095	859	87.6	12.4
Gambling	82	77	5	93.9	6.1
Offenses Against Family and Children	1,607	1,561	46	97.1	2.9
Driving Under the Influence	12,841	12,555	286	97.8	2.2
Liquor Law Violations	8,519	6,229	2,290	73.1	26.9
Disorderly Conduct/Disturb. the Peace	4,737	3,994	743	84.3	15.7
Vagrancy	0	0	0	0.0	0.0
All Other Offenses (Except Traffic)	18,653	15,979	2,674	85.7	14.3
Curfew and Loitering Law Violations	806	--	806	0.0	100.0
Runaways	710	--	710	0.0	100.0
Total Part II Offenses	75,744	62,550	13,194	82.6	17.4
Total	90,917	70,789	20,128	77.9	22.1

Table 23
Total Arrests by Age

Offense Classification	Under 10	10- 12	13- 14	15	16	17	Total Under 18
Murder, Manslaughter	0	0	2	1	4	4	11
Death by Negligence	0	0	0	0	0	0	0
Forcible Rape	0	1	12	10	9	8	40
Robbery	1	9	35	21	44	31	141
Aggravated Assault	0	12	22	36	51	62	183
Burglary	21	60	136	94	109	112	532
Larceny-Theft	187	1,010	1,795	1,004	809	771	5,576
Motor Vehicle Theft	5	17	100	87	68	50	327
Arson	9	42	47	19	3	4	124
Total Part I Offenses	223	1,151	2,149	1,272	1,097	1,042	6,934
Simple Assault	62	243	547	350	368	362	1,932
Forgery and Counterfeiting	0	7	16	16	36	44	119
Fraud - O.M.F.P.	0	4	15	10	29	48	106
Embezzlement	0	0	0	1	2	8	11
Possession of Stolen Property	2	28	161	144	134	130	599
Vandalism - Destruction of Prop.	103	240	434	213	231	387	1,608
Weapons-Carrying/Poss./Etc.	6	17	60	52	81	102	318
Prostitution and Commercial. Vice	0	0	2	0	0	3	5
Sex Offenses	3	12	27	12	10	13	77
Drug Abuse Violations	1	10	107	129	283	329	859
Gambling	0	0	0	0	3	2	5
Offenses Against Family/Children	3	5	12	6	9	11	46
Driving Under the Influence	0	0	3	13	99	171	286
Liquor Law Violations	1	11	155	311	712	1,100	2,290
Disorderly Conduct/Disturb. Peace	6	51	149	120	209	208	743
Vagrancy	0	0	0	0	0	0	0
All Other Offenses (Excpt. Traffic)	42	125	423	377	784	923	2,674
Curfew and Loitering	1	41	286	225	136	117	806
Runaways	5	43	234	148	174	106	710
Total Part II Offenses	235	837	2,631	2,127	3,300	4,064	13,194
Total	458	1,988	4,780	3,399	4,397	5,106	20,128

Table 23 - Continued

Offense Classification	18	19	20	21	22	23	24	25-29	30-34	35-39	40-44	45-49	50-54	55-59	60-64	Over 65	Total 18 & Over
Murder, Manslaughter	8	5	4	4	4	2	0	6	4	4	3	1	0	1	0	0	46
Death by Negligence	4	1	0	0	0	1	3	4	4	0	1	3	1	1	1	0	24
Forcible Rape	2	5	10	6	7	4	10	25	26	30	16	5	3	1	4	2	156
Robbery	19	8	12	19	13	8	8	33	23	19	13	0	1	0	0	0	176
Aggravated Assault	66	53	59	44	57	50	48	198	178	113	63	31	16	11	3	3	993
Burglary	128	80	62	52	28	28	30	88	75	46	28	14	10	1	1	0	671
Larceny-Theft	673	513	383	311	248	219	185	887	843	601	360	222	168	75	45	104	5,837
Motor Vehicle Theft	49	39	23	16	15	10	19	44	30	23	10	5	3	1	0	1	288
Arson	2	1	4	1	2	6	1	7	9	6	4	2	1	1	1	0	48
Total Part I Offenses	951	705	557	453	374	328	304	1,292	1,192	842	49%	283	203	92	55	110	8,239
Simple Assault	368	335	338	363	348	318	372	1,489	1,476	1,086	577	277	135	62	31	42	7,617
Forgery and Counterfeiting	65	103	53	42	44	38	46	108	156	61	20	15	6	1	0	2	760
Fraud - O.M.F.P.	93	127	158	140	120	124	118	517	474	328	187	112	49	27	9	17	2,600
Embezzlement	5	5	2	1	3	6	5	11	17	7	7	4	1	3	1	0	78
Possession of Stolen Property	107	99	81	62	50	49	33	134	134	87	51	16	7	2	1	1	914
Vandalism - Destruction of Prop.	285	275	105	83	83	72	86	301	246	161	84	36	12	8	6	6	1,849
Weapons-Carrying/Poss./Etc.	113	77	85	74	74	62	55	183	187	133	82	47	19	4	6	7	1,208
Prostitution and Commercial. Vice	8	10	3	9	23	15	15	71	100	64	41	12	8	3	4	5	391
Sex Offenses	18	36	29	25	29	22	30	79	106	84	76	47	22	24	6	10	643
Drug Abuse Violations	444	479	382	324	363	319	323	1,153	1,020	694	372	123	71	18	7	3	6,095
Gambling	4	2	4	0	2	3	0	8	15	7	9	6	1	10	0	6	77
Offenses Against Family/Children	14	22	45	39	63	62	61	312	355	310	153	68	34	7	11	5	1,561
Driving Under the Influence	327	411	456	544	555	549	524	2,363	2,229	1,794	1,185	735	414	195	128	146	12,555
Liquor Law Violations	1,565	1,583	1,206	255	160	145	106	320	285	223	162	104	46	36	14	19	6,229
Disorderly Conduct/Disturb. Peace	224	196	194	255	219	189	170	686	676	498	326	166	107	44	20	24	3,994
Vagrancy	0	0	0	0	0	0	0	0	0	0	0	0	0	0	0	0	0
All Other Offenses (Excpt. Traffic)	1,116	1,133	1,069	985	904	809	747	2,815	2,474	1,813	1,004	530	251	155	77	97	15,979
Curfew and Loitering																	
Runaways																	
Total Part II Offenses	4,756	1,893	4,210	3,201	3,040	2,782	2,691	10,550	9,950	7,350	4,336	2,298	1,183	599	321	390	62,550
Total	5,707	1,598	4,767	1,654	3,414	3,110	2,995	11,842	1,142	1,192	1,834	2,581	1,386	691	376	500	70,789

Table 24
Total Arrests by Sex

Offense Classification	Persons Arrested		Percent	
	Male	Female	Male	Female
Murder, Manslaughter	55	2	96.5	3.5
Death by Negligence	18	6	75.0	25.0
Forcible Rape	194	2	99.0	1.0
Robbery	296	21	93.4	6.6
Aggravated Assault	995	181	84.6	15.4
Burglary	1,117	86	92.9	7.1
Larceny-Theft	7,837	3,576	68.7	31.3
Motor Vehicle Theft	512	103	83.3	16.7
Arson	146	26	84.9	15.1
Total Part I Offenses	11,170	4,003	73.6	26.4
Simple Assault	7,543	2,006	79.0	21.0
Forgery and Counterfeiting	524	355	59.6	40.4
Fraud - O.M.F.P.	1,666	1,040	61.6	38.4
Embezzlement	49	40	55.1	44.9
Possession of Stolen Property	1,294	219	85.5	14.5
Vandalism - Destruction of Property	3,025	432	87.5	12.5
Weapons-Carrying/Possessing/Etc.	1,400	126	91.7	8.3
Prostitution and Commercialized Vice	225	171	56.8	43.2
Sex Offenses	689	31	95.7	4.3
Drug Abuse Violations	5,763	1,191	82.9	17.1
Gambling	75	7	91.5	8.5
Offenses Against Family and Children	864	743	53.8	46.2
Driving Under the Influence	10,749	2,092	83.7	16.3
Liquor Law Violations	6,214	2,305	72.9	27.1
Disorderly Conduct/Disturbing the Peace	3,788	949	80.0	20.0
Vagrancy	0	0	0.0	0.0
All Other Offenses (Except Traffic)	14,616	4,037	78.4	21.6
Curfew and Loitering Law Violations	522	284	64.8	35.2
Runaways	302	408	42.5	57.5
Total Part II Offenses	59,308	16,436	78.3	21.7
Total	70,478	20,439	77.5	22.5

**Table 25
Total Arrests by Race**

Offense Classification	Total Arrested	White	Black	American Indian or Alaskan Native	Asian or Pacific Islander
Murder, Manslaughter	57	25	29	3	0
Death by Negligence	24	21	2	1	0
Forcible Rape	196	132	61	2	1
Robbery	317	141	159	17	0
Aggravated Assault	1,176	815	299	55	7
Burglary	1,203	986	148	67	2
Larceny-Theft	11,413	8,924	2,045	355	89
Motor Vehicle Theft	615	487	80	44	4
Arson	172	149	18	4	1
Total Part I Offenses	15,173	11,680	2,841	548	104
Simple Assault	9,549	7,494	1,601	423	31
Forgery and Counterfeiting	879	725	139	15	0
Fraud - O.M.F.P.	2,706	2,267	389	43	7
Embezzlement	89	66	23	0	0
Possession of Stolen Property	1,513	961	509	32	11
Vandalism - Destruction of Property	3,457	2,877	444	118	18
Weapons-Carrying/Possessing/Etc.	1,526	978	519	24	5
Prostitution and Commercialized Vice	396	225	160	8	3
Sex Offenses	720	622	72	20	6
Drug Abuse Violations	6,954	4,958	1,874	98	24
Gambling	82	64	18	0	0
Offenses Against Family and Children	1,607	1,310	240	55	2
Driving Under the Influence	12,841	11,451	1,003	347	40
Liquor Law Violations	8,519	7,783	421	294	21
Disorderly Conduct/Disturbing the Peace	4,737	3,447	994	275	21
Vagrancy	0	0	0	0	0
All Other Offenses (Except Traffic)	18,653	14,145	3,814	621	73
Curfew and Loitering Law Violations	806	735	28	23	20
Runaways	710	667	17	15	11
Total Part II Offenses	75,744	60,775	12,265	2,411	293
Total	90,917	72,455	15,106	2,959	397

Table 26
Total Arrests by Race Under Age 18

Offense Classification	Total Arrested	White	Black	American Indian or Alaskan Native	Asian or Pacific Islander
Murder, Manslaughter	11	3	8	0	0
Death by Negligence	0	0	0	0	0
Forcible Rape	40	32	8	0	0
Robbery	141	65	70	6	0
Aggravated Assault	183	128	51	4	0
Burglary	532	436	54	41	1
Larceny-Theft	5,576	4,495	891	152	38
Motor Vehicle Theft	327	254	40	30	3
Arson	124	110	10	3	1
Total Part I Offenses	6,934	5,523	1,132	236	43
Simple Assault	1,932	1,536	312	80	4
Forgery and Counterfeiting	119	98	19	2	0
Fraud - O.M.F.P.	106	82	21	2	1
Embezzlement	11	9	2	0	0
Possession of Stolen Property	599	369	212	14	4
Vandalism - Destruction of Property	1,608	1,353	183	58	14
Weapons-Carrying/Possessing/Etc.	318	201	109	7	1
Prostitution and Commercialized Vice	5	3	2	0	0
Sex Offenses	77	68	8	1	0
Drug Abuse Violations	859	633	208	8	10
Gambling	5	0	5	0	0
Offenses Against Family and Children	46	40	5	1	0
Driving Under the Influence	286	261	16	7	2
Liquor Law Violations	2,290	2,180	51	58	1
Disorderly Conduct/Disturbing the Peace	743	533	184	26	0
Vagrancy	0	0	0	0	0
All Other Offenses (Except Traffic)	2,674	2,145	453	66	10
Curfew and Loitering Law Violations	806	735	28	23	20
Runaways	710	667	17	15	11
Total Part II Offenses	13,194	10,913	1,835	368	78
Total	20,128	16,436	2,967	604	121

Table 27
Total Arrests by Race, Age 18 and Over

Offense Classification	Total Arrested	White	Black	American Indian or Alaskan Native	Asian or Pacific Islander
Murder, Manslaughter	46	22	21	3	0
Death by Negligence	24	21	2	1	0
Forcible Rape	156	100	53	2	1
Robbery	176	76	89	11	0
Aggravated Assault	993	687	248	51	7
Burglary	671	550	94	26	1
Larceny-Theft	5,837	4,429	1,154	203	51
Motor Vehicle Theft	288	233	40	14	1
Arson	48	39	8	1	0
Total Part I Offenses	8,239	6,157	1,709	312	61
Simple Assault	7,617	5,958	1,289	343	27
Forgery and Counterfeiting	760	627	120	13	0
Fraud - O.M.F.P.	2,600	2,185	368	41	6
Embezzlement	78	57	21	0	0
Possession of Stolen Property	914	592	297	18	7
Vandalism - Destruction of Property	1,849	1,524	261	60	4
Weapons-Carrying/Possessing/Etc.	1,208	777	410	17	4
Prostitution and Commercialized Vice	391	222	158	8	3
Sex Offenses	643	554	64	19	6
Drug Abuse Violations	6,095	4,325	1,666	90	14
Gambling	77	64	13	0	0
Offenses Against Family and Children	1,561	1,270	235	54	2
Driving Under the Influence	12,555	11,190	987	340	38
Liquor Law Violations	6,229	5,603	370	236	20
Disorderly Conduct/Disturbing the Peace	3,994	2,914	810	249	21
Vagrancy	0	0	0	0	0
All Other Offenses (Except Traffic)	15,979	12,000	3,361	555	63
Curfew and Loitering Law Violations					
Runaways					
Total Part II Offenses	62,550	49,862	10,430	2,043	215
Total	70,789	56,019	12,139	2,355	276

Table 28
Drug Abuse Arrests by Sex and Race

Offense Classification	Total	Sex		Race			
		Male	Female	White	Black	Indian	Asian
Sale/Manufacturing	975	789	186	662	298	14	1
Opium/Cocaine/Derivatives	342	251	91	135	203	4	0
Marijuana	382	328	54	336	37	8	1
Synthetic Narcotics	75	59	16	74	1	0	0
Non-Narcotic Drugs	176	151	25	117	57	2	0
Possession	5,979	4,970	1,009	4,296	1,576	84	23
Opium/Cocaine/Derivatives	524	402	122	348	170	5	1
Marijuana	4,662	3,949	713	3,197	1,387	62	16
Synthetic Narcotics	231	154	77	222	2	5	2
Non-Narcotic Drugs	562	465	97	529	17	12	4
Total	6,954	5,759	1,195	4,958	1,874	98	24

Table 29
Drug Abuse Arrests, 1994 - 1995

Offense Classification	1994	1995	Percent Change	1995 Percent Distribution
Sale/Manufacturing	908	975	+7.4	14.0
Opium/Cocaine/Derivatives	385	342	-11.2	35.1
Marijuana	394	382	- 3.0	39.2
Synthetic Narcotics	27	75	+ 177.8	7.7
Non-Narcotic Drugs	102	176	+ 72.5	18.1
Possession	4,544	5,979	+31.6	86.0
Opium/Cocaine/Derivatives	410	524	+ 27.8	8.7
Marijuana	3,687	4,662	+ 26.4	78.0
Synthetic Narcotics	72	231	+ 220.8	3.9
Non-Narcotic Drugs	375	562	+49.9	9.4
Total	5,452	6,954	+ 27.5	100.0

OFFICERS KILLED / ASSAULTED

The killing or assaulting of a law enforcement officer is a serious problem faced by the law enforcement administrator and should be of the gravest concern to the public at large. Such acts directly affect the functioning of proper law enforcement operations and thus reduce the ability of our law enforcement agencies to combat crime and maintain law and order. The ambitious young person who today considers a career in law enforcement must also consider the risk of being killed or assaulted by a member of the society he is sworn to protect. The Omaha Police Department did not provide any information regarding assaults on law enforcement officers during 1995.

Officers Killed

In August of 1995, a law enforcement officer lost his life in the line of duty. An officer with the Omaha Police Department was killed during a routine traffic stop. The officer was fatally shot with a firearm while sitting in his vehicle.

Officers Assaulted

During 1995, there were 246 assaults on law enforcement officers. This represents an 18 percent increase from 1994. While every assault does not result in personal injury to the officer involved, many of them do result in physical harm to the officer and loss of duty time. During 1995, personal injury was involved in 31 percent of the assaults. Most of the assaults occurred while responding to disturbance calls and most of these were inflicted with hands, fists, or feet.

Figure 14
Officers Assaulted by Time, 1995

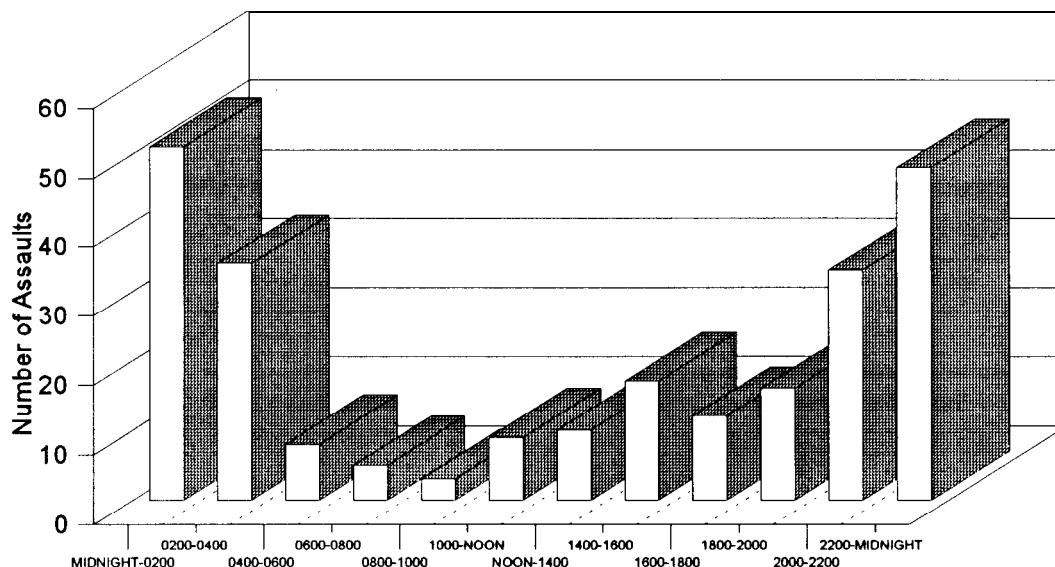


Table 30
Officers Assaulted - Type of Activity, 1994 - 1995

Circumstances	Total Assaults 1994	Total Assaults 1995	Percent Change	Percent Distribution
Disturbance Calls	58	89	+53	36.2
Burglaries in Progress	1	2	+ 100	0.8
Robberies in Progress	0	0	--	0.0
Attempting Other Arrests	43	54	+26	22.0
Civil Disorder	0	4	--	1.6
Prisoners in Custody	41	34	-17	13.8
Suspicious Persons/Circum.	9	9	--	3.7
Ambush	1	0	-100	0.0
Mentally Deranged	2	6	+ 200	2.4
Traffic Pursuits	22	29	+32	11.8
All Other	13	19	+46	7.7
Total	190	246	+30	100.0

Table 31
Officers Assaulted - Type of Weapon

Circumstances	Firearm	Knife, Cutting Instrument	Other Weapon	Hands, Fists, Feet, Etc.
Disturbance Calls	5	4	9	71
Burglaries in Progress	0	0	0	2
Robberies in Progress	0	0	0	0
Attempting Other Arrests	3	0	6	45
Civil Disorder	0	0	0	4
Prisoners in Custody	0	0	5	29
Suspicious Persons/Circum.	0	0	2	7
Ambush	0	0	0	0
Mentally Deranged	4	0	0	2
Traffic Pursuits	1	1	4	23
All Other	1	0	4	14
Total	14	5	30	197
Number with Personal Injury	4	2	14	56
Number without Personal Injury	10	3	16	141

**Table 32
Officers Assaulted - Type of Assignment**

Circumstances	Two-Man Vehicle	One-Man Vehicle		Detective/ Special Assignment		Other	
		Alone	Assisted	Alone	Assisted	Alone	Assisted
Disturbance Calls	5	16	54	1	0	2	11
Burglaries in Progress	0	0	0	0	0	0	2
Robberies in Progress	0	0	0	0	0	0	0
Attempting Other Arrests	1	14	30	0	0	2	7
Civil Disorder	0	0	1	0	3	0	0
Prisoners in Custody	2	1	12	0	0	4	15
Suspicious Persons/Circum.	0	3	5	0	0	1	0
Ambush	0	0	0	0	0	0	0
Mentally Deranged	0	0	5	0	1	0	0
Traffic Pursuits	2	14	13	0	0	0	0
All Other	3	8	4	0	2	0	2
Total	13	56	124	1	6	9	37

LAW ENFORCEMENT EMPLOYEE DATA

The Nebraska Uniform Crime Reporting Program surveys law enforcement agencies each year concerning employee data. As of October 31, 1995, there were 4,216 persons employed full-time in 164 law enforcement agencies.

Of the 4,216 employees, there were 2,995 sworn officers and 1,221 civilian employees. Based upon an estimated population of 1,637,000 there were 1.8 sworn officers per 1,000 population in the State. The rate of law enforcement officers per 1,000 population for any given agency is influenced by many factors. The determination of law enforcement strength for a certain area is based on such factors as population density, size and character of the community, geographic location and other conditions which exist in the area.

Females accounted for 9 percent of the sworn personnel and 71 percent of the civilian personnel.

**Table 33
Law Enforcement Employee Data -
County Sheriffs' Departments**

Agency	Total Full-Time Employees	Sworn Officers		Civilian		Sworn Officers Per 1,000 Population	Number of Assaults on Sworn Personnel
		Male	Female	Male	Female		
Adams	26	18	0	5	3	2.7	0
Antelope	11	6	0	1	4	1.0	0
Arthur	1	1	0	0	0	2.2	0
Banner	1	1	0	0	0	1.2	0
Blaine	1	1	0	0	0	1.5	0
Boone	12	4	0	1	7	0.9	0
Box Butte	14	3	1	5	5	1.2	1
Boyd	2	2	0	0	0	0.7	0
Brown	7	2	1	0	4	1.7	0
Buffalo	50	18	1	10	21	1.4	1
Burt	9	5	0	0	4	0.8	0
Butler	8	4	0	0	4	0.7	0
Cass	30	15	1	6	8	1.0	0
Cedar	9	5	0	2	2	0.5	0
Chase	8	2	0	1	5	0.9	0
Cherry	10	4	0	1	5	1.1	0
Cheyenne	12	5	0	6	1	1.4	0
Clay	9	4	0	0	5	0.5	0
Colfax	13	4	0	2	7	0.7	0
Cuming	8	4	0	0	4	0.6	1
Custer	7	6	0	0	1	0.7	0
Dakota	24	9	1	5	9	1.3	2
Dawes	8	3	0	1	4	0.9	0
Dawson	50	15	1	12	22	2.4	4
Deuel	6	3	0	0	3	1.4	0
Dixon	9	5	0	0	4	0.8	0
Dodge	19	16	0	0	3	1.5	1
Douglas	165	102	10	31	22	1.5	2
Dundy	7	4	0	0	3	1.6	0
Fillmore	8	4	0	1	3	0.9	0
Franklin	7	3	0	0	4	0.8	0
Frontier	9	5	0	1	3	1.6	0
Furnas	12	7	0	0	5	1.6	4
Gage	15	9	0	0	6	1.0	3
Garden	9	4	0	0	5	1.7	0
Garfield	2	2	0	0	0	0.8	0
Gosper	5	4	0	0	1	1.9	0
Grant	1	1	0	0	0	1.3	0
Greeley	2	1	0	0	1	0.3	0
Hall	29	22	1	0	6	2.4	6
Hamilton	13	6	1	1	5	1.3	0
Harlan	8	4	0	0	4	1.1	2
Hayes	2	2	0	0	0	1.7	0
Hitchcock	10	4	0	0	6	1.1	0
Holt	10	4	0	2	4	0.5	0
Hooker	2	2	0	0	0	2.7	0

**Table 33 - Continued
County Sheriffs' Departments**

Agency	Total Full-Time Employees	Sworn Officers		Civilian		Sworn Personnel Per 1,000 Population	Number of Assaults on Sworn Personnel
		Male	Female	Male	Female		
Howard	3	2	0	0	1	0.3	0
Jefferson	10	5	0	0	5	1.1	0
Johnson	7	2	0	1	4	0.7	0
Kearney	12	5	1	2	4	1.6	0
Keith	15	8	0	3	4	2.3	1
Keya Paha	1	1	0	0	0	1.1	0
Kimball	7	2	1	0	4	1.9	0
Knox	15	7	0	0	8	0.7	1
Lancaster	79	56	5	4	14	2.7	9
Lincoln	40	21	0	7	12	2.1	1
Logan	3	2	0	0	1	2.2	0
Loup	1	1	0	0	0	1.5	0
McPherson	1	1	0	0	0	1.8	0
Madison	27	17	1	0	9	1.9	3
Merrick	8	4	0	0	4	0.8	0
Morrill	9	3	0	1	5	0.6	1
Nance	8	4	0	1	3	0.9	0
Nemaha	8	3	0	1	4	0.7	0
Nuckolls	6	4	0	0	2	1.2	0
Otoe	17	8	0	3	6	1.3	0
Pawnee	4	3	0	0	1	0.9	0
Perkins	8	4	0	0	4	1.2	0
Phelps	11	4	0	1	6	1.0	0
Pierce	9	4	0	0	5	0.8	0
Platte	21	11	1	6	3	1.2	2
Polk	11	6	0	0	5	1.1	0
Red Willow	7	5	0	0	2	1.4	0
Richardson	7	3	0	1	3	0.6	0
Rock	8	3	0	0	5	1.5	0
Saline	14	10	0	0	4	1.5	0
Sarpy	120	84	16	3	17	2.1	1
Saunders	26	9	2	5	10	0.9	0
Scotts Bluff	19	14	0	1	4	1.1	4
Seward	20	8	1	5	6	1.1	7
Sheridan	4	3	0	0	1	0.6	2
Sherman	3	2	0	0	1	0.5	0
Sioux	1	1	0	0	0	0.6	0
Stanton	7	6	0	0	1	1.0	0
Thayer	9	5	0	0	4	0.8	0
Thomas	3	1	0	0	2	1.2	0
Thurston	8	3	0	0	5	0.4	1
Valley	6	2	0	0	4	0.8	0
Washington	25	11	0	5	9	1.1	0
Wayne	5	3	1	0	1	0.9	0
Webster	9	5	1	1	2	1.4	0
Wheeler	2	1	0	0	1	1.0	0
York	17	8	0	3	6	1.2	2

**Table 34
Law Enforcement Employee Data -
Cities Over 5,000 Population**

Agency	Total Full-Time Employees	Sworn Officers		Civilian		Sworn Personnel Per 1,000 Population	Number of Assaults on Sworn Personnel
		Male	Female	Male	Female		
Alliance	30	19	2	2	7	2.2	0
Beatrice	29	17	3	2	7	1.6	3
Bellevue	56	50	2	1	3	1.2	23
Blair	13	12	0	0	6	1.7	0
Chadron	19	12	0	1	6	2.0	0
Columbus	33	25	1	1	6	1.3	0
Crete	13	8	1	0	4	1.8	0
Fremont	40	30	3	0	7	1.4	5
Gering	18	14	1	0	3	1.8	2
Grand Island	67	59	1	0	7	1.4	19
Hastings	54	34	3	1	16	1.6	4
Holdrege	11	6	1	1	3	1.2	0
Kearney	44	36	0	3	5	1.4	5
LaVista	22	17	2	1	2	1.8	0
Lexington	16	12	2	0	2	1.6	3
Lincoln	374	236	40	30	68	1.3	71
McCook	18	14	0	1	3	1.8	0
Nebraska City	13	12	0	0	1	1.8	2
Norfolk	53	35	2	3	13	1.6	4
North Platte	55	35	0	3	17	1.5	2
Ogallala	10	7	1	1	1	1.6	2
Omaha	831	560	113	44	114	1.9	N
Papillion	22	18	2	0	2	1.8	0
Plattsmouth	10	8	1	0	1	1.3	5
Ralston	11	10	0	0	1	1.5	3
Scottsbluff	34	29	1	0	4	2.1	0
Seward	13	8	1	0	4	1.5	0
Sidney	16	12	0	1	3	2.0	0
So. Sioux	20	18	1	0	1	1.8	4
Wayne	12	8	0	2	2	1.5	0
York	19	14	0	1	4	1.7	0

N - No Reports Submitted

**Table 35
Law Enforcement Employee Data -
Cities Under 5,000 Population and State Agencies**

Agency	Total Full-Time Employees	Sworn Officers		Civilian		Sworn Personnel Per 1,000 Population	Number of Assaults on Sworn Personnel
		Male	Female	Male	Female		
Ainsworth	3	3	0	0	0	1.6	0
Albion	3	3	0	0	0	1.6	0
Ashland	4	4	0	0	0	1.7	0
Auburn	6	6	0	0	0	1.8	0
Aurora	8	7	0	0	1	1.8	0
Broken Bow	8	7	0	0	1	1.8	1
Central City	6	5	0	0	1	1.6	0
Cozad	11	6	1	0	4	1.8	3
David City	6	5	0	0	1	1.9	0
Elkhorn	5	5	0	0	0	3.5	0
Fairbury	7	6	0	0	1	1.4	0
Falls City	13	9	0	1	3	1.9	0
Geneva	4	3	1	0	0	1.8	1
Gordon	8	6	0	1	1	3.4	0
Gothenburg	10	5	1	0	4	1.8	1
Imperial	4	4	0	0	0	2.1	0
Kimball	6	6	0	0	0	2.3	5
Madison	4	4	0	0	0	1.8	2
Milford	4	4	0	0	0	2.1	0
Minden	5	4	0	0	1	1.4	0
Mitchell	5	5	0	0	0	2.8	0
Neligh	3	3	0	0	0	1.7	0
O'Neill	12	6	1	0	5	1.8	0
Ord	8	4	0	0	4	1.7	0
Pierce	3	3	0	0	0	1.9	1
Plainview	2	2	0	0	0	1.5	0
Schuyler	9	7	0	0	2	1.6	0
Superior	8	6	0	1	1	2.6	0
Syracuse	3	3	0	0	0	1.9	0
Tecumseh	4	3	0	0	1	1.8	0
Tekamah	4	4	0	0	0	2.0	0
Valentine	5	5	0	0	0	1.8	0
Valley	4	4	0	0	0	2.2	0
Wahoo	6	5	1	0	0	1.6	0
West Point	6	6	0	0	0	1.7	0
Wilber	4	4	0	0	0	2.7	1
Wymore	3	3	0	0	0	1.8	0
State Agencies							
State Patrol	637	429	20	95	93	--	6
UNL	41	21	2	11	7	--	1
UNK	7	5	1	0	1	--	0



OFFENSE DATA BY COUNTY

Offense Data By Agency	Number of Months Reported	Population	Crime Rate Per 1,000 Population	Total Index Crimes	Index Crimes Cleared	Murder, Manslaughter	Forcible Rape	Robbery	Aggravated Assault	Burglary	Larceny - Theft	Motor Vehicle Theft	Arson
Adams County		29,916	39.5	1,182	222	2	7	3	18	131	967	53	1
Sheriffs Office	12	6,762	25.3	171	7	1	1	0	1	21	133	14	0
Hastings P.D.	12	23,154	43.6	1,009	213	1	6	3	17	108	334	39	1
State Patrol	12	--	--	2	2	0	0	0	0	2	0	0	0
Antelope County		7,682	7.8	60	4	0	0	0	1	12	41	6	0
Sheriffs Office	12	5,955	6.2	37	4	0	0	0	1	9	21	6	0
Neligh P.D.	12	1,727	13.3	23	0	0	0	0	0	3	20	0	0
State Patrol	12	--	--	0	0	0	0	0	0	0	0	0	0
Arthur County		447	4.5	2	1	0	0	0	1	0	1	0	0
Sheriffs Office	12	447	2.2	1	1	0	0	0	0	0	1	0	0
State Patrol	12	--	--	1	0	0	0	0	1	0	0	0	0
Banner County		867	20.8	18	1	0	1	0	1	6	10	0	0
Sheriffs Office	12	867	17.3	15	1	0	1	0	0	4	10	0	0
State Patrol	12	--	--	3	0	0	0	0	1	2	0	0	0
Blaine County		673	0.0	0	0	0	0	0	0	0	0	0	0
Sheriffs Office	12	673	0.0	0	0	0	0	0	0	0	0	0	0
State Patrol	12	--	--	0	0	0	0	0	0	0	0	0	0
Boone County		6,566	6.4	42	7	0	0	0	1	14	26	0	1
Sheriffs Office	12	4,703	8.9	42	7	0	0	0	1	14	26	0	1
Albion P.D.	0	1,863											
State Patrol	12	--	--	0	0	0	0	0	0	0	0	0	0
Box Butte County		13,002	31.5	410	152	0	4	2	14	43	324	19	4
Sheriffs Office	12	3,318	6.3	21	5	0	0	0	1	4	15	1	0
Alliance P.D.	12	9,684	40.1	388	146	0	4	2	12	39	309	18	4
State Patrol	12	--	--	1	1	0	0	0	1	0	0	0	0
Boyd County		2,745	13.8	38	21	0	0	0	2	9	23	4	0
Sheriffs Office	12	2,745	13.6	38	21	0	0	0	2	9	23	4	0
State Patrol	12	--	--	0	0	0	0	0	0	0	0	0	0
Brown County		3,656	21.6	79	18	0	1	0	0	22	53	3	0
Sheriffs Office	12	1,802	21.1	38	4	0	0	0	0	17	20	1	0
Ainsworth P.D.	12	1,854	22.1	41	14	0	1	0	0	5	33	2	0
State Patrol	12	--	--	0	0	0	0	0	0	0	0	0	0

Offense Data By Agency	Number of Months Reported	Population	Crime Rate Per 1,000 Population	Total Index Crimes	Index Crimes Cleared	Murder, Manslaughter	Forcible Rape	Robbery	Aggravated Assault	Burglary	Larceny - Theft	Motor Vehicle Theft	Arson
Buffalo County		39,728	45.4	1,805	295	0	13	2	81	205	1,433	59	12
Sheriffs Office	12	13,286	21.3	283	39	0	5	0	21	37	204	15	1
Kearney P.D.	12	26,442	54.1	1,431	252	0	7	1	58	160	1,151	43	11
UNK - Public Safety	12		--	87	2	0	0	0	1	8	77	1	0
State Patrol	12		--	4	2	0	1	1	1	0	1	0	0
Burt County		7,960	14.3	114	17	0	1	0	4	15	87	5	2
Sheriffs Office	12	6,004	15.8	95	5	0	0	0	2	13	76	3	1
Tekamah P.D.	12	1,956	9.2	18	12	0	0	0	2	2	11	2	1
State Patrol	12	--	--	1	0	0	1	0	0	0	0	0	0
Butler County		8,640	18.1	156	36	0	1	0	5	29	120	1	0
Sheriffs Office	12	6,046	11.7	71	9	0	1	0	0	16	53	1	0
David City P.D.	12	2,594	32.0	83	27	0	0	0	4	13	66	0	0
State Patrol	12	--	--	2	0	0	0	0	1	0	1	0	0
Cass County		22,657	24.2	549	57	0	0	1	11	98	394	31	14
Sheriffs Office	12	15,819	17.8	282	5	0	0	0	2	63	190	15	12
Plattsmouth P.D.	12	6,838	37.7	258	49	0	0	1	7	33	199	16	2
State Patrol	12	--	--	9	3	0	0	0	2	2	5	0	0
Cedar County		10,138	7.2	73	12	0	1	1	1	11	50	9	0
Sheriffs Office	12	10,138	6.7	68	11	0	0	0	1	11	47	9	0
State Patrol	12	--	--	5	1	0	1	1	0	0	3	0	0
Chase County		4,263	10.6	45	14	0	2	0	0	7	32	3	1
Sheriffs Office	12	2,319	2.6	6	4	0	0	0	0	0	5	1	0
Imperial P.D.	12	1,944	20.1	39	10	0	2	0	0	7	27	2	1
State Patrol	12	--	--	0	0	0	0	0	0	0	0	0	0
Cherry County		6,421	5.6	20	8	0	0	1	2	3	12	2	0
Sheriffs Office	12	3,570	5.6	20	8	0	0	1	2	3	12	2	0
Valentine P.D.	1	2,851											
State Patrol	12	--	--	0	0	0	0	0	0	0	0	0	0
Cheyenne County		9,655	28.7	277	65	1	2	1	4	54	199	14	2
Sheriffs Office	12	3,589	29.5	106	15	0	0	0	2	30	65	8	1
Sidney P.D.	12	6,066	27.5	167	47	1	2	1	2	24	132	4	1
State Patrol	12	--	--	4	3	0	0	0	0	0	2	2	0
Clay County		7,298	a.4	61	18	0	0	0	2	14	38	7	0
Sheriffs Office	12	7,298	8.4	61	18	0	0	0	2	14	38	7	0
State Patrol	12	--	--	0	0	0	0	0	0	0	0	0	0

Offense Data By Agency	Number of Months Reported	Population	Crime Rate Per 1,000 Population	Total Index Crimes	Index Crimes Cleared	Murder, Manslaughter	Forcible Rape	Robbery	Aggravated Assault	Burglary	Larceny - Theft	Motor Vehicle Theft	Arson
Colfax County		9,925	19.9	198	57	2	0	1	6	25	151	13	0
Sheriffs Office	11	5,532	4.2	23	8	2	0	1	1	6	12	1	0
Schuyler P.D.	12	4,393	39.6	174	48	0	0	0	4	19	139	12	0
State Patrol	12	--	--	1	1	0	0	0	1	0	0	0	0
Cuming County		10,175	5.6	57	14	0	1	0	7	14	32	3	0
Sheriffs Office	12	6,702	4.0	27	6	0	0	0	3	12	11	1	0
West Point P.D.	12	3,473	8.6	30	8	0	1	0	4	2	21	2	0
State Patrol	12	--	--	0	0	0	0	0	0	0	0	0	0
Custer County		12,512	10.1	126	36	0	0	0	11	17	97	1	0
Sheriffs Office	12	8,649	4.5	39	12	0	0	0	9	10	19	1	0
Broken Bow P.D.	12	3,863	22.5	87	24	0	0	0	2	7	78	0	0
State Patrol	12	--	--	0	0	0	0	0	0	0	0	0	0
Dakota County		17,979	37.4	673	154	1	1	4	11	106	503	46	1
Sheriffs Office	12	7,606	23.1	176	21	1	1	1	3	49	105	15	1
So. Sioux City P.D.	12	10,373	47.9	497	133	0	0	3	8	57	398	31	0
State Patrol	12	--	--	0	0	0	0	0	0	0	0	0	0
Dawes County		9,189	33.0	303	85	0	0	0	5	38	242	17	1
Sheriffs Office	12	3,323	10.8	36	7	0	0	0	2	11	20	2	1
Chadron P.D.	12	5,866	45.5	267	78	0	0	0	3	27	222	15	0
State Patrol	12	--	--	0	0	0	0	0	0	0	0	0	0
Dawson County		22,673	42.4	962	248	0	6	6	37	127	750	34	2
Sheriffs Office	12	6,625	26.4	175	38	0	2	0	5	22	133	13	0
Cozad P.D.	12	3,969	35.3	140	41	0	1	2	5	19	109	3	1
Gothenburg P.D.	12	3,302	38.8	128	17	0	0	0	2	11	109	6	0
Lexington P.D.	12	8,777	57.9	508	143	0	2	4	24	74	391	12	1
State Patrol	12	--	--	11	9	0	1	0	1	1	8	0	0
Deuel County		2,119	17.5	37	4	0	0	0	1	2	30	3	1
Sheriffs Office	12	2,119	16.5	35	4	0	0	0	0	2	29	3	1
State Patrol	12	--	--	2	0	0	0	0	1	0	1	0	0
Dixon County		6,294	11.9	75	23	0	4	0	4	22	43	2	0
Sheriffs Office	12	6,294	11.9	75	23	0	4	0	4	22	43	2	0
State Patrol	12	--	--	0	0	0	0	0	0	0	0	0	0
Dodge County		34,865	38.6	1,347	209	1	3	7	59	218	999	60	0
Sheriffs Office	12	10,905	18.8	205	7	1	2	1	1	48	134	18	0
Fremont P.D.	12	23,960	47.6	1,141	202	0	1	6	58	169	865	42	0
State Patrol	12	--	--	1	0	0	0	0	0	1	0	0	0

. Estimated

Offense Data By Agency	Number of Months Reported	Population	Crime Rate Per 1,000 Population	Total Index Crimes	Index Crimes Cleared	Murder, Manslaughter	Forcible Rape	Robbery	Aggravated Assault	Burglary	Larceny - Theft	Motor Vehicle Theft	Arson
Douglas County		434,099	68.5	29,745	9,277	27	89	822	2,784	4,136	17,731	3,908	248
Sheriffs Office	12	76,247	25.2	1,923	478	0	9	11	102	222	1,466	107	6
Omaha P.D.	12	348,089	79.2	27,565	8,750	27	80	808	2,670	3,883	16,071	3,785	241
Elkhorn P.D.	12	1,436	25.8	37	10	0	0	0	3	4	28	2	0
Ralston P.D.	12	6,517	28.1	183	27	0	0	3	8	19	141	11	1
Valley P.D.	12	1,810	16.6	30	9	0	0	0	0	8	21	1	0
State Patrol	12	--	--	7	3	0	0	0	1	0	4	2	0
Dundy County		2,540	14.6	37	14	0	0	0	0	9	24	4	0
Sheriffs Office	12	2,546	14.6	37	14	0	0	0	0	9	24	4	0
State Patrol	12	--	--	0	0	0	0	0	0	0	0	0	0
Fillmore County		6,942	12.8	89	17	0	2	0	5	20	55	7	0
Sheriffs Office	12	4,687	9.6	45	10	0	2	0	4	17	17	5	0
Geneva P.D.	12	2,255	19.1	43	7	0	0	0	1	3	37	2	0
State Patrol	12	--	--	1	0	0	0	0	0	0	1	0	0
Franklin County		3,809	15.2	58	7	0	0	0	0	5	52	1	0
Sheriffs Office	12	3,809	15.0	57	6	0	0	0	0	4	52	1	0
State Patrol	12	--	--	1	1	0	0	0	0	1	0	0	0
Frontier County		3,170	23.0	73	16	0	0	0	0	11	62	0	0
Sheriffs Office	12	3,170	23.0	73	16	0	0	0	0	11	62	0	0
State Patrol	12	--	--	0	0	0	0	0	0	0	0	0	0
Furnas County		5,715	15.9	91	23	0	0	1	9	22	56	3	0
Sheriffs Office	12	5,715	15.9	91	23	0	0	1	9	22	56	3	0
State Patrol	12	--	--	0	0	0	0	0	0	0	0	0	0
Gage County		23,029	41.2	948	110	0	4	2	15	107	772	38	10
Sheriffs Office	12	8,963	17.2	154	7	0	0	1	5	34	100	9	5
Beatrice P.D.	12	12,435	61.2	761	102	0	4	1	9	71	644	27	5
Wymore P.D.	12	1,631	19.6	32	1	0	0	0	0	2	28	2	0
State Patrol	12	--	--	1	0	0	0	0	1	0	0	0	0
Garden County		2,323	22.8	53	12	0	0	0	5	15	33	0	0
Sheriffs Office	12	2,323	22.8	53	12	0	0	0	5	15	33	0	0
State Patrol	12	--	--	0	0	0	0	0	0	0	0	0	0
Garfield County		2,630	0.0	0	0	0	0	0	0	0	0	0	0
Sheriffs Office	0	2,630											
State Patrol	12	--	--	0	0	0	0	0	0	0	0	0	0

Offense Data By Agency	Number of Months Reported	Population	Crime Rate Per 1,000 Population	Total Index Crimes	Index Crimes Cleared	Murder, Manslaughter	Forcible Rape	Robbery	Aggravated Assault	Burglary	Larceny - Theft	Motor Vehicle Theft	Arson
Gosper County		2,077	13.0	27	4	0	0	0	1	2	21	3	0
Sheriffs Office	11	2,077	13.0	27	4	0	0	0	1	2	21	3	0
State Patrol	12	--	--	0	0	0	0	0	0	0	0	0	0
Grant County		786	2.5	2	0	0	0	0	0	1	0	0	1
Sheriffs Office	11	786	1.3	1	0	0	0	0	0	0	0	0	1
State Patrol	12	--	--	1	0	0	0	0	0	1	0	0	0
Greeley County		3,046	0.0	0	0	0	0	0	0	0	0	0	0
Sheriffs Office	12	3,046	0.0	0	0	0	0	0	0	0	0	0	0
State Patrol	12	--	--	0	0	0	0	0	0	0	0	0	0
Hall County		51,132	75.6	3,867	1,415	0	30	17	138	525	2,992	157	8
Sheriffs Office	12	9,630	35.0	337	79	0	2	0	18	52	242	17	6
Grand Island P.D.	12	41,502	84.3	3,500	1,330	0	28	17	119	473	2,723	138	2
State Patrol	12	--	--	30	6	0	0	0	1	0	27	2	0
Hamilton County		9,225	15.8	146	40	0	0	0	3	19	120	4	0
Sheriffs Office	12	5,323	13.7	73	17	0	0	0	0	19	52	2	0
Aurora P.D.	12	3,902	18.5	72	23	0	0	0	3	0	67	2	0
State Patrol	12	--	--	1	0	0	0	0	0	0	1	0	0
Harlan County		3,783	13.7	52	8	0	0	0	2	8	39	3	0
Sheriffs Office	12	3,783	13.7	52	8	0	0	0	2	8	39	3	0
State Patrol	12	--	--	0	0	0	0	0	0	0	0	0	0
Hayes County		1,164	4.3	5	3	0	0	0	1	1	1	2	0
Sheriffs Office	12	1,164	4.3	5	3	0	0	0	1	1	1	2	0
State Patrol	12	--	--	0	0	0	0	0	0	0	0	0	0
Hitchcock County		3,480	7.8	27	9	0	0	0	0	8	18	1	0
Sheriffs Office	12	3,480	7.8	27	9	0	0	0	0	8	18	1	0
State Patrol	12	--	--	0	0	0	0	0	0	0	0	0	0
Holt County		12,541	11.2	140	41	0	2	0	1	14	119	4	0
Sheriffs Office	9	8,735	3.2	28	1	0	1	0	0	3	24	0	0
O'Neill P.D.	12	3,806	28.9	110	39	0	1	0	0	10	95	4	0
State Patrol	12	--	--	2	1	0	0	0	1	1	0	0	0
Hooker County		733	2.7	2	0	0	0	0	0	0	2	0	0
Sheriffs Office	12	733	0.0	0	0	0	0	0	0	0	0	0	0
State Patrol	12	--	--	2	0	0	0	0	0	0	2	0	0

. Estimated

Offense Data By Agency	Number of Months Reported	Population	Crime Rate Per 1,000 Population	Total Index Crimes	Index Crimes Cleared	Murder, Manslaughter	Forcible Rape	Robbery	Aggravated Assault	Burglary	Larceny - Theft	Motor Vehicle Theft	Arson
Howard County		6,320	16.5	104	41	1	0	0	0	11	82	10	0
Sheriffs Office	12	6,320	16.1	102	40	1	0	0	0	11	81	9	0
State Patrol	12	-	-	2	1	0	0	0	0	0	1	1	0
Jefferson County		8,655	24.6	213	38	0	0	0	5	57	142	8	1
Sheriffs Office	12	4,428	16.5	73	16	0	0	0	2	15	51	4	1
Fairbury P.D.	12	4,227	33.1	140	22	0	0	0	3	42	91	4	0
State Patrol	12	--	--	0	0	0	0	0	0	0	0	0	0
Johnson County		4,669	12.6	59	7	0	0	1	2	14	39	3	0
Sheriffs Office	12	2,990	14.0	42	4	0	0	1	2	11	25	3	0
Tecumseh P.D.	12	1,679	9.5	16	3	0	0	0	0	3	13	0	0
State Patrol	12	--	--	1	0	0	0	0	0	0	1	0	0
Kearney County		6,618	27.5	182	58	0	1	0	7	24	142	8	0
Sheriffs Office	12	3,774	24.9	94	29	0	0	0	2	14	72	6	0
Minden P.D.	12	2,844	30.9	88	29	0	1	0	5	10	70	2	0
State Patrol	12	--	--	0	0	0	0	0	0	0	0	0	0
Keith County		8,551	31.7	271	64	0	5	1	9	31	215	9	1
Sheriffs Office	12	3,467	18.7	65	14	0	0	0	3	15	42	5	0
Ogallala P.D.	12	5,084	40.5	206	50	0	5	1	6	16	173	4	1
State Patrol	12	--	--	0	0	0	0	0	0	0	0	0	0
Keya Paha County		907	4.4	4	3	0	0	0	0	4	0	0	0
Sheriffs Office	12	907	4.4	4	3	0	0	0	0	4	0	0	0
State Patrol	12	--	--	0	0	0	0	0	0	0	0	0	0
Kimball County		4,097	27.1	111	36	0	1	0	9	19	76	6	0
Sheriffs Office	12	1,541	18.8	29	6	0	1	0	3	3	20	2	0
Kimball P.D.	12	2,556	32.1	82	30	0	0	0	6	16	56	4	0
State Patrol	12	-	--	0	0	0	0	0	0	0	0	0	0
Knox County		9,597	12.0	115	37	1	2	2	2	46	46	15	1
Sheriffs Office	12	9,597	11.8	113	36	1	2	1	2	45	46	15	1
State Patrol	12	--	--	2	1	0	0	1	0	1	0	0	0
Lancaster County		227,695	69.6	15,853	3,719	2	81	126	1,154	2,064	11,842	491	93
Sheriffs Office	12	22,867	25.7	587	153	0	1	4	22	114	408	27	11
Lincoln P.D.	12	204,828	70.9	14,515	3,528	2	80	122	1,127	1,880	10,765	457	82
UNL Campus Police	12	--	--	724	32	0	0	0	1	65	654	4	0
State Patrol	12	--	--	27	6	0	0	0	4	5	15	3	0

Offense Data By Agency	Number of Months Reported	Population	Crime Rate Per 1,000 Population	Total Index Crimes	Index Crimes Cleared	Murder, Manslaughter	Forcible Rape	Robbery	Aggravated Assault	Burglary	Larceny - Theft	Motor Vehicle Theft	Arson
Lincoln County		33,592	61.5	2,065	590	0	11	15	57	289	1,604	75	14
Sheriffs Office	12	10,222	23.8	243	40	0	6	4	7	36	177	10	3
North Platte P.D.	12	23,370	77.7	1,815	549	0	5	11	49	252	1,422	65	11
State Patrol	12	--	--	7	1	0	0	0	1	1	5	0	0
Logan County		895	6.7	6	2	0	0	0	0	5	1	0	0
Sheriffs Office	10	895	6.7	6	2	0	0	0	0	5	1	0	0
State Patrol	12	--	--	0	0	0	0	0	0	0	0	0	0
Loup County		665	3.0	2	1	0	0	0	1	1	0	0	0
Sheriffs Office	12	665	1.5	1	1	0	0	0	1	0	0	0	0
State Patrol	12	--	--	1	0	0	0	0	0	1	0	0	0
McPherson County		558	5.4	3	2	0	0	0	0	2	1	0	0
Sheriffs Office	12	558	3.6	2	2	0	0	0	0	1	1	0	0
State Patrol	12	--	--	1	0	0	0	0	0	1	0	0	0
Madison County		34,183	42.0	1,436	310	2	14	5	34	128	1,174	73	6
Sheriffs Office	12	9,374	9.7	91	16	0	0	0	9	23	56	3	0
Norfolk P.D.	12	22,628	57.1	1,291	278	2	14	4	22	96	1,082	65	6
Madison P.D.	12	2,181	15.6	34	16	0	0	1	2	5	24	2	0
State Patrol	12	--	--	20	0	0	0	0	1	4	12	3	0
Merrick County		8,193	18.1	148	28	1	0	0	5	21	111	8	2
Sheriffs Office	12	5,132	14.0	72	9	1	0	0	4	13	49	3	2
Central City P.D.	12	3,061	24.2	74	19	0	0	0	1	7	61	5	0
State Patrol	12	--	--	2	0	0	0	0	0	1	1	0	0
Morrill County		5,390	24.5	132	37	0	1	0	3	25	95	7	1
Sheriffs Office	12	5,390	24.1	130	37	0	1	0	3	25	93	7	1
State Patrol	12	--	--	2	0	0	0	0	0	0	2	0	0
Nance County		4,312	10.2	44	5	0	0	0	0	10	30	4	0
Sheriffs Office	12	4,312	10.2	44	5	0	0	0	0	10	30	4	0
State Patrol	12	--	--	0	0	0	0	0	0	0	0	0	0
Nemaha County		7,829	18.5	145	5	0	1	0	1	38	95	9	1
Sheriffs Office	12	4,449	21.4	95	3	0	0	0	1	22	67	5	0
Auburn P.D.	3	3,380	14.5	49	2	0	0	0	0	16	28	4	1
State Patrol	12	--	--	1	0	0	1	0	0	0	0	0	0

* Estimated

Offense Data By Agency	Number of Months Reported	Population	Crime Rate Per 1,000 Population	Total Index Crimes	Index Crimes Cleared	Murder, Manslaughter	Forcible Rape	Robbery	Aggravated Assault	Burglary	Larceny - Theft	Motor Vehicle Theft	Arson
Nuckolls County		5,617	2.5	14	8	0	0	0	0	3	8	3	0
Sheriffs Office	12	3,310	3.3	11	5	0	0	0	0	2	7	2	0
Superior P.D.	12	2,307	1.7	3	3	0	0	0	0	1	1	1	0
State Patrol	12	--	--	0	0	0	0	0	0	0	0	0	0
Otoe County		14,503	22.0	319	61	0	0	1	5	62	223	23	5
Sheriffs Office	12	6,226	10.9	68	6	0	0	0	0	24	35	8	1
Nebraska City P.D.	12	6,674	35.5	237	54	0	0	1	4	37	179	15	1
Syracuse P.D.	12	1,603	8.1	13	0	0	0	0	0	1	9	0	3
State Patrol	12	--	--	1	1	0	0	0	1	0	0	0	0
Pawnee County		3,329	10.5	35	4	0	0	0	1	8	24	2	0
Sheriffs Office	12	3,329	10.5	35	4	0	0	0	1	8	24	2	0
State Patrol	12	--	--	0	0	0	0	0	0	0	0	0	0
Perkins County		3,274	15.0	49	7	0	0	0	2	4	39	4	0
Sheriffs Office	12	3,274	15.0	49	7	0	0	0	2	4	39	4	0
State Patrol	12	--	--	0	0	0	0	0	0	0	0	0	0
Phelps County		9,953	25.0	249	49	0	0	0	4	42	193	9	1
Sheriffs Office	12	4,061	7.1	29	5	0	0	0	0	8	21	0	0
Holdrege P.D.	12	5,892	37.0	218	44	0	0	0	4	32	172	9	1
State Patrol	12	--	--	2	0	0	0	0	0	2	0	0	0
Pierce County		7,897	9.5	75	9	0	0	0	4	8	58	5	0
Sheriffs Office	11	5,004	8.8	44	4	0	0	0	4	5	31	4	0
Pierce P.D.	12	1,601	12.5	20	1	0	0	0	0	2	17	1	0
Plainview P.D.	11	1,292	7.0	9	2	0	0	0	0	1	8	0	0
State Patrol	12	--	--	2	2	0	0	0	0	0	2	0	0
Platte County		30,934	33.4	1,033	156	3	7	6	13	138	790	70	6
Sheriffs Office	12	10,243	21.5	220	23	0	1	0	3	52	138	26	0
Columbus P.D.	12	20,691	39.3	813	133	3	6	6	10	86	652	44	6
State Patrol	12	--	--	0	0	0	0	0	0	0	0	0	0
Polk County		5,603	11.4	64	7	0	0	0	1	7	55	0	1
Sheriffs Office	12	5,603	11.4	64	7	0	0	0	1	7	55	0	1
State Patrol	12	--	--	0	0	0	0	0	0	0	0	0	0
Red Willow County		11,469	15.3	176	80	0	0	1	4	24	130	14	3
Sheriffs Office	12	3,531	5.9	21	6	0	0	0	0	4	13	3	1
McCook P.D.	12	7,938	18.9	150	70	0	0	1	3	20	116	8	2
State Patrol	12	--	--	5	4	0	0	0	1	0	1	3	0

. Estimated

Offense Data By Agency	Number of Months Reported	Population	Crime Rate Per 1,000 Population	Total Index Crimes	Index Crimes Cleared	Murder, Manslaughter	Forcible Rape	Robbery	Aggravated Assault	Burglary	Larceny - Theft	Motor Vehicle Theft	Arson
Richardson County		9,833	21.4	210	77	0	0	0	4	42	154	7	3
Sheriffs Office	12	5,102	11.6	59	13	0	0	0	3	20	32	2	2
Falls City PD.	12	4,731	31.9	151	64	0	0	0	1	22	122	5	1
State Patrol	12	--	--	0	0	0	0	0	0	0	0	0	0
Rock County		1,947	14.9	29	5	0	0	0	0	8	20	1	0
Sheriffs Office	12	1,947	14.9	29	5	0	0	0	0	8	20	1	0
State Patrol	12	--	--	0	0	0	0	0	0	0	0	0	0
Saline County		13,009	24.4	317	67	0	0	0	6	49	254	3	5
Sheriffs Office	12	6,477	13.4	87	13	0	0	0	1	24	57	3	2
Wilber P.D.	12	1,501	24.0	36	9	0	0	0	2	1	33	0	0
Crete P.D.	12	5,031	38.6	194	45	0	0	0	3	24	164	0	3
State Patrol	12	--	--	0	0	0	0	0	0	0	0	0	0
Sarpy County		110,145	29.7	3,272	737	2	5	26	54	354	2,609	174	46
Sheriffs Office	12	48,880	19.1	897	82	0	2	3	21	111	695	47	18
Bellevue P.D.	12	41,630	38.0	1,581	361	2	2	19	24	190	1,218	101	25
Papillion P.D.	12	10,910	30.5	333	78	0	1	5	5	27	280	12	3
LaVista P.D.	12	10,725	42.5	456	214	0	0	1	4	26	411	14	0
State Patrol	12	--	--	5	2	0	0	0	0	0	5	0	0
Saunders County		18,865	18.1	341	37	0	0	1	4	71	232	26	7
Sheriffs Office	12	12,720	16.3	207	18	0	0	0	2	55	132	15	3
Wahoo P.D.	12	3,839	21.9	84	16	0	0	1	2	6	69	3	3
Ashland P.D.	12	2,306	20.8	48	2	0	0	0	0	8	31	8	1
State Patrol	12	--	--	2	1	0	0	0	0	2	0	0	0
Scotts Bluff County		37,263	40.3	1,500	540	0	0	5	57	192	1,176	63	7
Sheriffs Office	12	13,078	14.8	193	57	0	0	0	8	30	134	16	5
Scottsbluff P.D.	12	14,191	65.8	934	379	0	0	5	35	114	739	40	1
Gering P.D.	12	8,228	38.5	317	91	0	0	0	9	45	258	4	1
Mitchell P.D.	12	1,766	27.7	49	11	0	0	0	3	1	43	2	0
State Patrol	12	--	--	7	2	0	0	0	2	2	2	1	0
Seward County		16,186	25.8	417	94	0	2	2	22	69	302	12	8
Sheriffs Office	12	8,299	21.3	177	15	0	1	2	3	52	105	10	4
Seward P.D.	12	5,944	29.8	177	67	0	0	0	18	10	144	2	3
Milford P.D.	12	1,943	29.3	57	11	0	1	0	1	4	50	0	1
State Patrol	12	--	--	6	1	0	0	0	0	3	3	0	0

Offense Data By Agency	Number of Months Reported	Population	Crime Rate Per 1,000 Population	Total Index Crimes	Index Crimes Cleared	Murder, Manslaughter	Forcible Rape	Robbery	Aggravated Assault	Burglary	Larceny - Theft	Motor Vehicle Theft	Arson
Sheridan County		6,726	37.6	253	91	0	0	1	13	51	177	10	1
Sheriffs Office	12	4,940	28.7	142	24	0	0	1	8	36	89	7	1
Gordon P.D.	12	1,786	61.6	110	67	0	0	0	4	15	88	3	0
State Patrol	12	--	--	1	0	0	0	0	1	0	0	0	0
Sherman County		3,642	17.0	62	9	0	0	0	0	18	43	1	0
Sheriffs Office	12	3,642	16.7	61	9	0	0	0	0	17	43	1	0
State Patrol	12	--	--	1	0	0	0	0	0	1	0	0	0
Sioux County		1,579	12.0	19	2	1	1	0	0	10	7	0	0
Sheriffs Office	12	1,579	10.8	17	2	1	0	0	0	9	7	0	0
State Patrol	12	--	--	2	0	0	1	0	0	1	0	0	0
Stanton County		6,200	9.5	59	22	0	3	0	5	9	38	4	0
Sheriffs Office	12	6,200	9.2	57	22	0	3	0	5	9	38	2	0
State Patrol	12	--	--	2	0	0	0	0	0	0	0	2	0
Thayer County		6,593	12.4	82	15	0	0	0	3	22	52	4	1
Sheriffs Office	12	6,593	12.4	82	15	0	0	0	3	22	52	4	1
State Patrol	12	--	--	0	0	0	0	0	0	0	0	0	0
Thomas County		832	8.4	7	0	0	0	0	0	0	7	0	0
Sheriffs Office	12	832	8.4	7	0	0	0	0	0	0	7	0	0
State Patrol	12	--	--	0	0	0	0	0	0	0	0	0	0
Thurston County		7,261	1.4	10	6	0	1	0	1	3	2	1	2
Sheriffs Office	12	7,261	1.1	8	6	0	1	0	1	1	2	1	2
State Patrol	12	--	--	2	0	0	0	0	0	2	0	0	0
Valley County		4,941	12.1	60	13	0	0	0	1	13	42	4	0
Sheriffs Office	12	2,530	2.8	7	2	0	0	0	0	2	4	1	0
Ord P.D.	12	2,411	22.0	53	11	0	0	0	1	11	38	3	0
State Patrol	12	--	--	0	0	0	0	0	0	0	0	0	0
Washington County		17,595	22.7	399	70	0	1	0	15	56	301	23	3
Sheriffs Office	12	10,435	16.7	174	12	0	0	0	5	37	122	8	2
Blair P.D.	12	7,160	31.4	225	58	0	1	0	10	19	179	15	1
State Patrol	12	--	--	0	0	0	0	0	0	0	0	0	0
Wayne County		9,646	16.4	158	19	0	1	0	4	23	125	3	2
Sheriffs Office	12	4,241	8.0	34	0	0	0	0	0	8	25	1	0
Wayne P.D.	12	5,405	22.9	124	19	0	1	0	4	15	100	2	2
State Patrol	12	--	--	0	0	0	0	0	0	0	0	0	0

Offense Data By Agency	Number of Months Reported	Population	Crime Rate Per 1,000 Population	Total Index Crimes	Index Crimes Cleared	Murder, Manslaughter	Forcible Rape	Robbery	Aggravated Assault	Burglary	Larceny - Theft	Motor Vehicle Theft	Arson
Webster County		4,226	13.5	57	4	0	1	0	0	17	37	1	1
Sheriffs Office	12	4,226	13.3	56	3	0	1	0	0	16	37	1	1
State Patrol	12	--	--	1	1	0	0	0	0	1	0	0	0
Wheeler County		983	1.0	1	2	0	0	0	0	0	1	0	0
Sheriffs Office	12	983	1.0	1	2	0	0	0	0	0	1	0	0
State Patrol		--	--	0	0	0	0	0	0	0	0	0	0
York County		14,701	26.8	394	86	1	0	1	10	62	306	14	0
Sheriffs Office	12	6,612	14.4	95	16	0	0	0	7	30	54	4	0
York P.D.	12	8,089	36.5	295	68	1	0	0	2	32	250	10	0
State Patrol	12	--	--	4	2	0	0	1	1	0	2	0	0
Nebraska State Patrol	12	--	--	46	17	0	1	0	32	1	13	0	1

ARREST DATA BY COUNTY

Arrest Data by Agency	Total Arrests	Total Adult	Total Juvenile	Murder, Manslaughter	Death by Negligence	Forcible Rape	Robbery	Aggravated Assault	Burglary	Larceny - Theft	Motor Vehicle Theft	Simple Assault	Arson	Forgery	Fraud	Embezzlement	Stolen Property Offenses	Vandalism	Weapons Violations	Prostitution	Sex Offenses	Drug Abuse Violations	Gambling	Offenses Against Family	Driving Under the Influence	Liquor Law Violations	Disorderly Conduct	Vagrancy	All Other Offenses	Curfew and Loitering	Runaways
Webster County	42	36	6	0	0	1	0	0	3	1	0	1	0	0	5	0	0	2	1	0	1	2	0	1	6	8	0	0	10	0	0
Sheriff's Office	41	35	6	0	0	1	0	0	3	1	0	1	0	0	5	0	0	2	1	0	1	2	0	1	6	8	0	0	9	0	0
State Patrol	1	1	0	0	0	0	0	0	0	0	0	0	0	0	0	0	0	0	0	0	0	0	0	0	0	0	0	1	0	0	
Wheeler County	3	3	0	0	0	0	0	0	0	0	0	0	0	0	0	0	0	0	0	0	0	0	0	0	2	0	0	0	1	0	0
Sheriff's Office	0	0	0	0	0	0	0	0	0	0	0	0	0	0	0	0	0	0	0	0	0	0	0	0	0	0	0	0	0	0	0
State Patrol	3	3	0	0	0	0	0	0	0	0	0	0	0	0	0	0	0	0	0	0	0	0	0	0	2	0	0	0	1	0	0
York County	781	490	291	1	0	0	0	8	2	67	5	73	0	8	76	0	8	20	1	0	2	49	0	22	103	68	23	0	114	77	54
Sheriff's Office	226	207	19	0	0	0	0	5	0	10	2	15	0	3	58	0	0	2	0	0	1	8	0	18	34	22	5	0	34	1	8
York P.D.	465	195	270	1	0	0	0	2	2	57	3	57	0	5	17	0	6	18	1	0	1	21	0	4	24	42	18	0	64	76	46
State Patrol	90	88	2	0	0	0	0	1	0	0	0	1	0	1	0	2	0	0	0	0	0	20	0	0	45	4	0	0	16	0	0
Nebraska State Patrol	9	5	4	0	0	0	0	0	0	0	0	0	0	0	0	0	0	0	0	0	0	1	0	0	0	0	1	1	0	0	0